

## Product datasheet for **TA302669**

### **S6K1 (RPS6KB1) Goat Polyclonal Antibody**

#### **Product data:**

<b>Product Type:</b>	Primary Antibodies
<b>Applications:</b>	IHC, WB
<b>Recommended Dilution:</b>	ELISA: 1:8,000; WB: 0.05-0.1 ug/ml; IHC: 2-4 ug/ul
<b>Reactivity:</b>	Human (Expected from sequence similarity: Mouse, Rat, Dog, Cow)
<b>Host:</b>	Goat
<b>Isotype:</b>	IgG
<b>Clonality:</b>	Polyclonal
<b>Immunogen:</b>	Peptide with sequence C-MISKRPEHLRMNL, from the C Terminus of the protein sequence according to NP_003152.1.
<b>Formulation:</b>	Supplied at 0.5 mg/ml in Tris saline, 0.02% sodium azide, pH7.3 with 0.5% bovine serum albumin.
<b>Concentration:</b>	lot specific
<b>Purification:</b>	Purified from goat serum by ammonium sulphate precipitation followed by antigen affinity chromatography using the immunizing peptide. Supplied at 0.5 mg/ml in Tris saline, 0.02% sodium azide, pH7.3 with 0.5% bovine serum albumin.
<b>Conjugation:</b>	Unconjugated
<b>Storage:</b>	Store at -20°C as received.
<b>Stability:</b>	Stable for 12 months from date of receipt.
<b>Predicted Protein Size:</b>	59 kDa
<b>Gene Name:</b>	ribosomal protein S6 kinase B1
<b>Database Link:</b>	<a href="#">NP_003152</a> <a href="#">Entrez Gene 72508 Mouse</a> <a href="#">Entrez Gene 83840 Rat</a> <a href="#">Entrez Gene 480580 Dog</a> <a href="#">Entrez Gene 6198 Human</a> <a href="#">P23443</a>

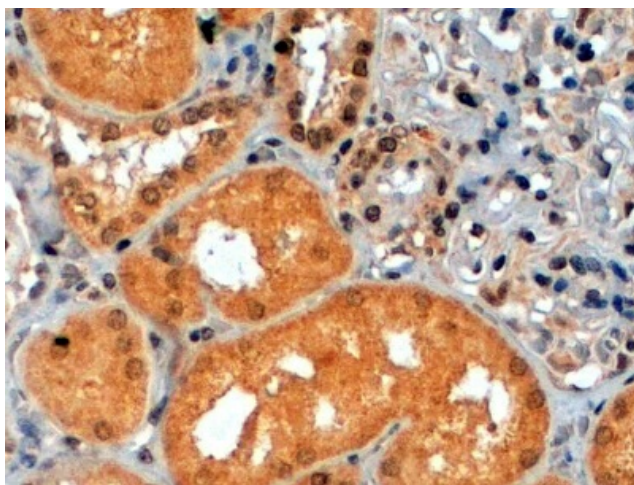


[View online »](#)

<b>Background:</b>	This gene encodes a member of the RSK (ribosomal S6 kinase) family of serine/threonine kinases. This kinase contains 2 non-identical kinase catalytic domains and phosphorylates several residues of the S6 ribosomal protein. The kinase activity of this protein leads to an increase in protein synthesis and cell proliferation. Amplification of the region of DNA encoding this gene and overexpression of this kinase are seen in some breast cancer cell lines. Alternate translational start sites have been described and alternate transcriptional splice variants have been observed but have not been thoroughly characterized. [provided by RefSeq]
<b>Synonyms:</b>	p70 S6KA; p70(S6K)-alpha; p70-alpha; p70-S6K; PS6K; S6K; S6K-beta-1; S6K1; STK14A
<b>Note:</b>	In paraffin embedded Human Kidney shows staining in the cytoplasm-rich PCT while less so in the DCT and no signals in the glomerulus
<b>Protein Families:</b>	Druggable Genome, Protein Kinase
<b>Protein Pathways:</b>	Acute myeloid leukemia, ErbB signaling pathway, Fc gamma R-mediated phagocytosis, Insulin signaling pathway, mTOR signaling pathway, TGF-beta signaling pathway

**Product images:**

TA302669 staining (0.05ug/ml) of Human Placenta lysate (RIPA buffer, 35ug total protein per lane). Primary incubated for 1 hour. Detected by western blot using chemiluminescence.



TA302669 (2ug/ml) staining of paraffin embedded Human Kidney. Steamed antigen retrieval with citrate buffer pH 6, HRP-staining.