

Product datasheet for **TA302436**

BDKRB1 Goat Polyclonal Antibody

Product data:

Product Type:	Primary Antibodies
Applications:	WB
Recommended Dilution:	ELISA: 1:1,000. WB: 2-4µg/ml.
Reactivity:	Human
Host:	Goat
Isotype:	IgG
Clonality:	Polyclonal
Immunogen:	Peptide with sequence KVVELYKQCTPK, from the internal region of the protein sequence according to NP_000701.2.
Formulation:	Supplied at 0.5 mg/ml in Tris saline, 0.02% sodium azide, pH7.3 with 0.5% bovine serum albumin.
Purification:	Purified from goat serum by ammonium sulphate precipitation followed by antigen affinity chromatography using the immunizing peptide. Supplied at 0.5 mg/ml in Tris saline, 0.02% sodium azide, pH7.3 with 0.5% bovine serum albumin.
Conjugation:	Unconjugated
Storage:	Store at -20°C as received.
Stability:	Stable for 12 months from date of receipt.
Predicted Protein Size:	44120 Da
Gene Name:	bradykinin receptor B1
Database Link:	NP_000701 Entrez Gene 623 Human P46663



[View online »](#)

Background:

Bradykinin, a 9 aa peptide, is generated in pathophysiologic conditions such as inflammation, trauma, burns, shock, and allergy. Two types of G-protein coupled receptors have been found which bind bradykinin and mediate responses to these pathophysiologic conditions. The protein encoded by this gene is one of these receptors and is synthesized de novo following tissue injury. Receptor binding leads to an increase in the cytosolic calcium ion concentration, ultimately resulting in chronic and acute inflammatory responses. [provided by RefSeq]

Synonyms:

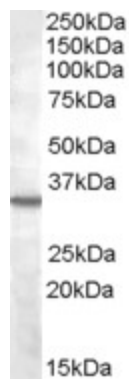
B1BKR; B1R; BDKRB2; BKB1R; BKR1; BRADYB1

Protein Families:

Druggable Genome, GPCR, Transmembrane

Protein Pathways:

Calcium signaling pathway, Complement and coagulation cascades, Neuroactive ligand-receptor interaction, Regulation of actin cytoskeleton

Product images:


TA302436 (2ug/ml) staining of K562 lysate (35ug protein in RIPA buffer). Primary incubation was 1 hour. Detected by chemiluminescence.

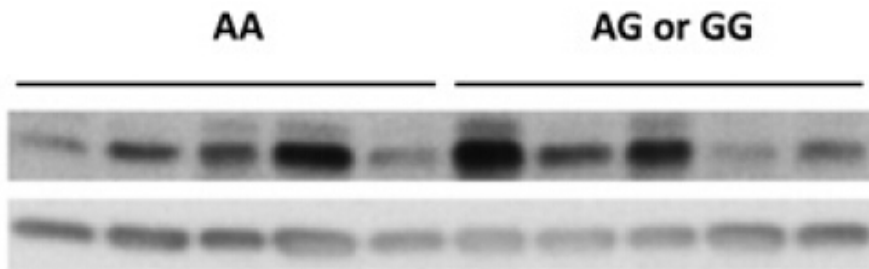


Figure from citation: Western Blot of BDKRB1 protein level by using anti-BDKRB1 antibody in HCMA segments. [View Citation](#)

BDKRB1 protein levels