

## Product datasheet for **TA302426**

### SMARCE1 Goat Polyclonal Antibody

#### Product data:

Product Type:	Primary Antibodies
Applications:	IHC, WB
Recommended Dilution:	ELISA: 1:16,000. WB: 0.2-0.6µg/ml.
Reactivity:	Human (Expected from sequence similarity: Mouse)
Host:	Goat
Isotype:	IgG
Clonality:	Polyclonal
Immunogen:	Peptide with sequence C-PPTDPIPEDEKKE, from the C Terminus of the protein sequence according to NP_003070.3.
Formulation:	Supplied at 0.5 mg/ml in Tris saline, 0.02% sodium azide, pH7.3 with 0.5% bovine serum albumin.
Concentration:	lot specific
Purification:	Purified from goat serum by ammonium sulphate precipitation followed by antigen affinity chromatography using the immunizing peptide. Supplied at 0.5 mg/ml in Tris saline, 0.02% sodium azide, pH7.3 with 0.5% bovine serum albumin.
Conjugation:	Unconjugated
Storage:	Store at -20°C as received.
Stability:	Stable for 12 months from date of receipt.
Predicted Protein Size:	50276 Da
Gene Name:	SWI/SNF related, matrix associated, actin dependent regulator of chromatin, subfamily e, member 1
Database Link:	<a href="#">NP_003070</a> <a href="#">Entrez Gene 57376 Mouse</a> <a href="#">Entrez Gene 6605 Human</a> <a href="#">Q969G3</a>



[View online »](#)

**Background:**

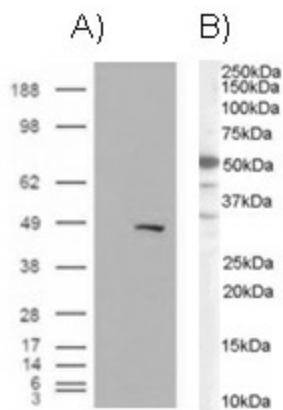
The protein encoded by this gene is part of the large ATP-dependent chromatin remodeling complex SWI/SNF, which is required for transcriptional activation of genes normally repressed by chromatin. The encoded protein, either alone or when in the SWI/SNF complex, can bind to 4-way junction DNA, which is thought to mimic the topology of DNA as it enters or exits the nucleosome. The protein contains a DNA-binding HMG domain, but disruption of this domain does not abolish the DNA-binding or nucleosome-displacement activities of the SWI/SNF complex. Unlike most of the SWI/SNF complex proteins, this protein has no yeast counterpart. [provided by RefSeq]

**Synonyms:**

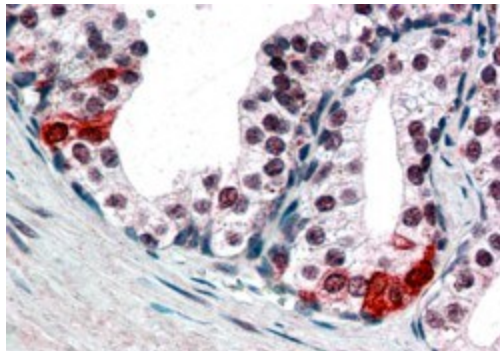
BAF57; CSS5

**Protein Families:**

Transcription Factors

**Product images:**


A) HEK293 overexpressing BAF57 ([RC209444]) and probed with TA302426 (mock transfection in first lane), tested by Origene. B) Western blot of Jurkat cells



In paraffin embedded Human Prostate shows nuclear staining in secretory epithelial cells. Recommended concentration, 3-5ug/ml.