

Product datasheet for **TA302159**

PI 3 Kinase p85 alpha (PIK3R1) Rabbit Polyclonal Antibody

Product data:

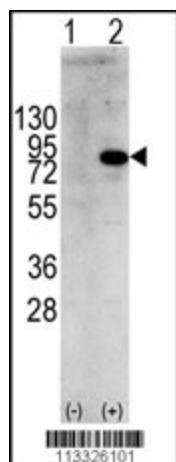
Product Type:	Primary Antibodies
Applications:	IHC, WB
Recommended Dilution:	WB: 1:1000, IHC: 1:10~50
Reactivity:	Human (Predicted: Mouse, Rat, Bovine, Xenopus)
Host:	Rabbit
Isotype:	Ig
Clonality:	Polyclonal
Immunogen:	This PIK3R1 antibody is generated from rabbits immunized with a KLH conjugated synthetic peptide between 558-587 amino acids from human PIK3R1.
Formulation:	Purified polyclonal antibody supplied in PBS with 0.09% (W/V) sodium azide.
Concentration:	lot specific
Purification:	This antibody is purified through a protein A column, followed by peptide affinity purification.
Conjugation:	Unconjugated
Storage:	Store at -20°C as received.
Stability:	Stable for 12 months from date of receipt.
Predicted Protein Size:	83598 Da
Gene Name:	phosphoinositide-3-kinase regulatory subunit 1
Database Link:	NP_852664 Entrez Gene 18708 Mouse Entrez Gene 25513 Rat Entrez Gene 5295 Human P27986
Background:	Phosphatidylinositol 3-kinase phosphorylates the inositol ring of phosphatidylinositol at the 3-prime position. The enzyme comprises a 110 kD catalytic subunit and a regulatory subunit of either 85, 55, or 50 kD. This gene encodes the 85 kD regulatory subunit. Phosphatidylinositol 3-kinase plays an important role in the metabolic actions of insulin, and a mutation in this gene has been associated with insulin resistance.
Synonyms:	AGM7; GRB1; IMD36; p85; p85-ALPHA
Protein Families:	Druggable Genome



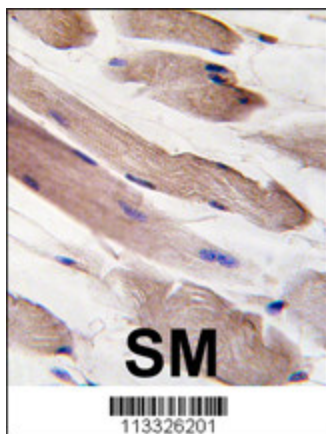
[View online »](#)

Protein Pathways:

Acute myeloid leukemia, Apoptosis, B cell receptor signaling pathway, Chemokine signaling pathway, Chronic myeloid leukemia, Colorectal cancer, Endometrial cancer, ErbB signaling pathway, Fc epsilon RI signaling pathway, Fc gamma R-mediated phagocytosis, Focal adhesion, Glioma, Insulin signaling pathway, Jak-STAT signaling pathway, Leukocyte transendothelial migration, Melanoma, mTOR signaling pathway, Natural killer cell mediated cytotoxicity, Neurotrophin signaling pathway, Non-small cell lung cancer, Pancreatic cancer, Pathways in cancer, Phosphatidylinositol signaling system, Progesterone-mediated oocyte maturation, Prostate cancer, Regulation of actin cytoskeleton, Renal cell carcinoma, Small cell lung cancer, T cell receptor signaling pathway, Toll-like receptor signaling pathway, Type II diabetes mellitus, VEGF signaling pathway

Product images:

Western blot analysis of PIK3R1 (arrow) using rabbit polyclonal PIK3R1 Antibody (Y580) (Cat.#TA302159). 293 cell lysates (2 ug/lane) either nontransfected (Lane 1) or transiently transfected with the PIK3R1 gene (Lane 2) (Origene Technologies).



Formalin-fixed and paraffin-embedded human skeletal muscle tissue reacted with PIK3R1-pY580, which was peroxidase-conjugated to the secondary antibody, followed by DAB staining. This data demonstrates the use of this antibody for immunohistochemistry; clinical relevance has not been evaluated.