

## Product datasheet for **TA302055**

### SMAD4 Rabbit Polyclonal Antibody

#### Product data:

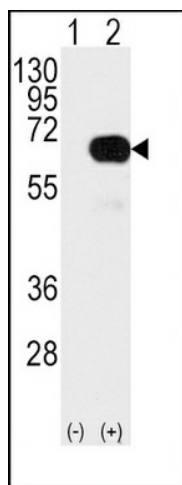
Product Type:	Primary Antibodies
Applications:	IF, WB
Recommended Dilution:	WB: 1:1000, IF: 1:10~50
Reactivity:	Human (Predicted: Mouse, Rat)
Host:	Rabbit
Isotype:	Ig
Clonality:	Polyclonal
Immunogen:	This SMAD4 antibody is generated from rabbits immunized with a KLH conjugated synthetic peptide between 255-284 amino acids from human SMAD4.
Formulation:	Purified polyclonal antibody supplied in PBS with 0.09% (W/V) sodium azide.
Concentration:	lot specific
Purification:	This antibody is purified through a protein A column, followed by peptide affinity purification.
Conjugation:	Unconjugated
Storage:	Store at -20°C as received.
Stability:	Stable for 12 months from date of receipt.
Predicted Protein Size:	60439 Da
Gene Name:	SMAD family member 4
Database Link:	<a href="#">NP_005350</a> <a href="#">Entrez Gene 17128 Mouse</a> <a href="#">Entrez Gene 50554 Rat</a> <a href="#">Entrez Gene 4089 Human</a> <a href="#">Q13485</a>
Background:	SMAD4 is the common SMAD (co-SMAD)mediator of signal transduction by TGF-beta (transforming growth factor). It promotes binding of the SMAD2/SMAD4/FAST-1 complex to DNA and provides an activation function required for SMAD1 or SMAD2 to stimulate transcription. It may act as a tumor suppressor.
Synonyms:	DPC4; JIP; MADH4; MYHRS
Protein Families:	Druggable Genome, Transcription Factors



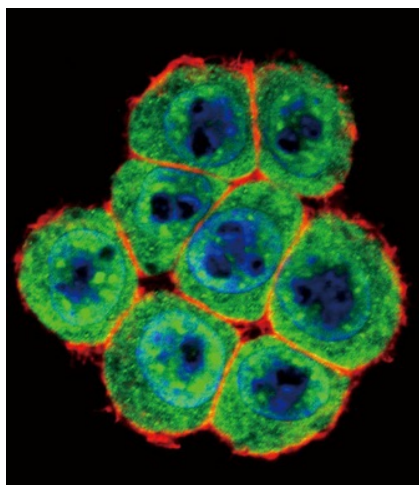
[View online »](#)

**Protein Pathways:** Adherens junction, Cell cycle, Chronic myeloid leukemia, Colorectal cancer, Pancreatic cancer, Pathways in cancer, TGF-beta signaling pathway, Wnt signaling pathway

**Product images:**



Western blot analysis of SMAD4 Antibody (T277) (arrow) using rabbit polyclonal SMAD4 Antibody (T277) (Cat.#TA302055). 293 cell lysates (2 ug/lane) either nontransfected (Lane 1) or transiently transfected with the SMAD4 gene (Lane 2) (Origene Technologies).



Confocal immunofluorescent analysis of SMAD4 Antibody (T277) (Cat.#TA302055) with HeLa cells followed by Alexa Fluor 488-conjugated goat anti-rabbit IgG (green). Actin filaments have been labeled with Alexa Fluor 555 phalloidin (red). DAPI was used to stain the cell nuclear (blue).