

Product datasheet for **TA301482**

BMI1 Rabbit Polyclonal Antibody

Product data:

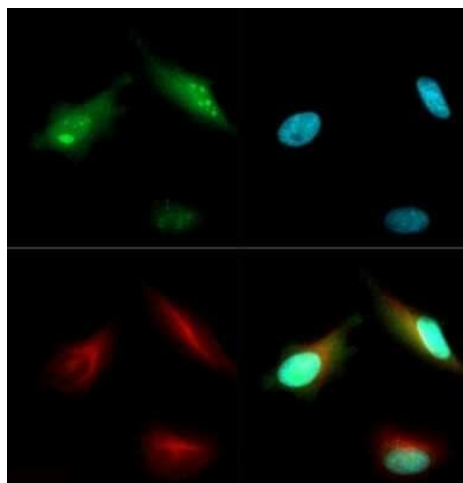
Product Type:	Primary Antibodies
Applications:	ICC/IF, IHC, WB
Recommended Dilution:	Immunohistochemistry, Western Blot: 2 ug/ml, Immunocytochemistry/ Immunofluorescence: 1:50-1:200
Reactivity:	Human, Mouse
Host:	Rabbit
Isotype:	IgG
Clonality:	Polyclonal
Immunogen:	A synthetic peptide made to an internal region (within residues 1-100) of the human Bmi1 protein. [Swiss-Prot# P35226]
Formulation:	Tris-glycine, 150mM NaCl and 0.05% sodium azide
Concentration:	lot specific
Purification:	Immunogen affinity purified
Conjugation:	Unconjugated
Storage:	Store at -20°C as received.
Stability:	Stable for 12 months from date of receipt.
Gene Name:	BMI1 proto-oncogene, polycomb ring finger
Database Link:	NP_005171 Entrez Gene 12151 Mouse Entrez Gene 648 Human P35226
Background:	The Bmi1 oncogene has been shown to induce telomerase activity and immortalize human mammary epithelial cells. Bmi1 extends the replicative life span of human fibroblasts by suppressing the p16-dependent senescence pathway. Bmi1 is also important in maintaining stem cells' ability to self renew. It has also been termed an oncogene with aberrant expression in various carcinomas. It has been shown to be a negative regulator of p19Arf, Ink4a (p14Arf) and tp53 known tumor repressors. Ablation of Bmi1 is required for short term survival of cancer cells.
Synonyms:	BMI1; FLVI2; PCGF4; RNF51



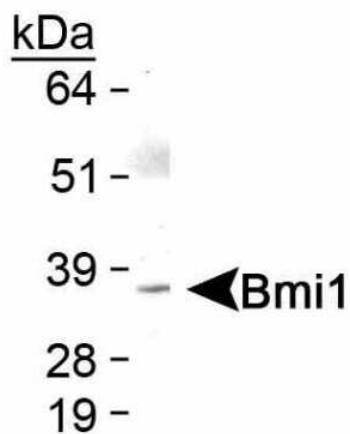
[View online »](#)

Protein Families: Druggable Genome, ES Cell Differentiation/IPS, Transcription Factors

Product images:



Immunocytochemistry/Immunofluorescence:
Bmi1 Antibody TA301482 - BMI1 antibody was tested in HeLa cells with Dylight 488 (green). Nuclei and alpha-tubulin were counterstained with DAPI (blue) and Dylight 550 (red).



Western Blot: Bmi1 Antibody TA301482 -
Detection of Bmi1 protein in skeletal muscle