

Product datasheet for **TA180076S**

Mouse monoclonal mGFP/mCFP/mYFP/KillerRed antibody, clone OT12F6

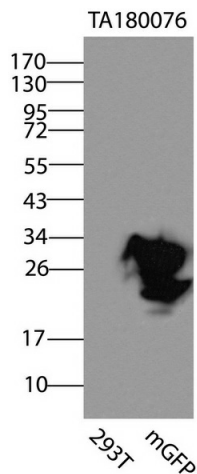
Product data:

Product Type:	Tag Antibodies
Product Name:	Mouse monoclonal mGFP/mCFP/mYFP/KillerRed antibody, clone OT12F6
Clone Name:	OT12F6 (formerly 2F6)
Applications:	WB
Recommended Dilution:	WB: 1:500
Reactivity:	mGFP, mCFP, mYFP, KillerRed
Host:	Mouse
Clonality:	Monoclonal
Immunogen:	This antibody is raised against a recombinant protein of mGFP expressed in HEK293 cells. It recognizes mGFP, mCFP, mYFP and KillerRed proteins.
Isotype:	IgG1
Formulation:	PBS (pH7.3) containing 1% BSA, 50% glycerol and 0.02% sodium azide
Concentration:	1 mg/ml
Conjugation:	Unconjugated
Storage:	Store at -20°C.
Stability:	Stable for 1 year at -20°C from date of shipment.
Predicted Protein Size:	27.3 kDa

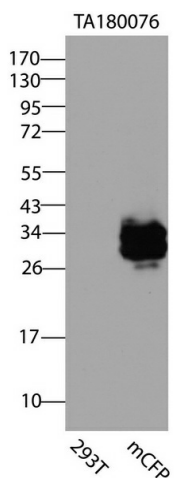


[View online »](#)

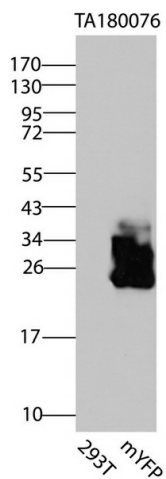
Product images:



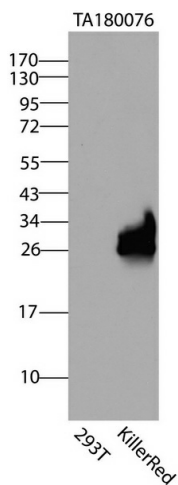
HEK293T cells were transfected with the pCMV6-ENTRY control (Left lane) or pCMV6-ENTRY mGFP (Right lane) cDNA for 48 hrs and lysed. Equivalent amounts of cell lysates (5 ug per lane) were separated by SDS-PAGE and immunoblotted with anti-mGFP/mCFP/mYFP/KillerRed ([TA180076], 1:500).



HEK293T cells were transfected with the pCMV6-ENTRY control (Left lane) or pCMV6-ENTRY mCFP (Right lane) cDNA for 48 hrs and lysed. Equivalent amounts of cell lysates (5 ug per lane) were separated by SDS-PAGE and immunoblotted with anti-mGFP/mCFP/mYFP/KillerRed ([TA180076], 1:500).



HEK293T cells were transfected with the pCMV6-ENTRY control (Left lane) or pCMV6-ENTRY mYFP (Right lane) cDNA for 48 hrs and lysed. Equivalent amounts of cell lysates (5 ug per lane) were separated by SDS-PAGE and immunoblotted with anti-mGFP/mCFP/mYFP/KillerRed ([TA180076], 1:500).



HEK293T cells were transfected with the pCMV6-ENTRY control (Left lane) or pCMV6-ENTRY KillerRed (Right lane) cDNA for 48 hrs and lysed. Equivalent amounts of cell lysates (5 ug per lane) were separated by SDS-PAGE and immunoblotted with anti-mGFP/mCFP/mYFP/KillerRed ([TA180076], 1:500).