

Product datasheet for **SP1302**

ADAM17 Rabbit Polyclonal Antibody

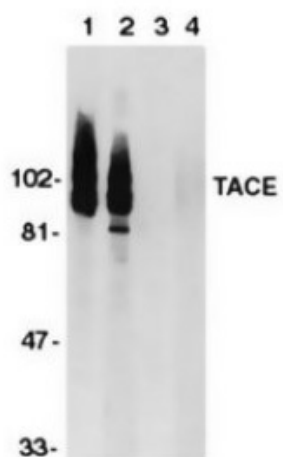
Product data:

Product Type:	Primary Antibodies
Applications:	WB
Recommended Dilution:	Western Blot: 1:500.
Reactivity:	Human
Host:	Rabbit
Clonality:	Polyclonal
Immunogen:	Peptide corresponding to amino acids 807 to 823 of human CD156b
Specificity:	This antibody recognises the C-terminal region of the TNF alpha converting enzyme (TACE), designated CD156b at the 6th leukocyte typing workshop.
Formulation:	PBS containing 0.02% Sodium Azide State: Aff - Purified State: Liquid purified IgG
Concentration:	lot specific
Purification:	Affinity chromatography
Conjugation:	Unconjugated
Storage:	Store the antibody undiluted at 2-8°C for one month or (in aliquots) at -20°C for longer. Avoid repeated freezing and thawing.
Stability:	Shelf life: one year from despatch.
Gene Name:	ADAM metalloproteinase domain 17
Database Link:	Entrez Gene 6868 Human P78536
Background:	TACE is a membrane-bound metalloprotease disintegrin which belongs to the mammalian ADAM family.
Synonyms:	CSV, TACE



[View online »](#)

Product images:



Western blot analysis of CD156b (TACE) in HeLa (1, 3) and Jurkat (2, 4) whole cell lysate in the absence (1, 2) or presence (3, 4) of blocking peptide.