

Product datasheet for **SM3024P**

CD44 Mouse Monoclonal Antibody [Clone ID: MEM-263]

Product data:

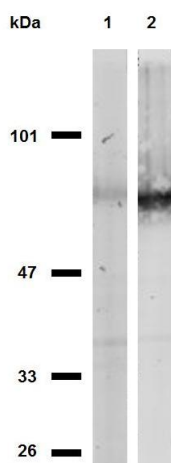
| | |
|-----------------------|---------------------------------------------------------------------------------------------------------------------------------------------------------------------------------------------------------------------------------------------------------------------------------------------------------------------------------------------------------------------------------------------------------------------------------------------------------------------------------------------------------------------------------------------------------------------------------------------------------------------------------------------------------------------------------------------------------------------------------------------|
| Product Type: | Primary Antibodies |
| Clone Name: | MEM-263 |
| Applications: | FC, IHC, IP, WB |
| Recommended Dilution: | Flow Cytometry: 4 µg/ml. Immunoprecipitation. Western Blot: 2 mg/ml, 60 min on vertical incubator. <i>Positive control:</i> Kg-1a human acute leukemia cell lysate, JURKAT human leukemia T-cell lysate. Sample preparation: Resuspend approx. 50 mil. cells in 1 ml cold Lysis buffer (1% laurylmaltoside in 20 mM Tris/Cl, 100 mM NaCl pH 8.2, 50 mM NaF including Protease inhibitor Cocktail). Incubate 60 min on ice. Centrifuge to remove cell debris. Mix lysate with non-reducing SDS-PAGE sample buffer. Application note: Non-reducing conditions. SDS-PAGE (6% separating gel). Immunohistochemistry (paraffin sections): 10 µg/ml. <i>Positive tissue:</i> uterus, myometrium. |
| Reactivity: | Human, Porcine, Canine |
| Host: | Mouse |
| Isotype: | IgG1 |
| Clonality: | Monoclonal |
| Immunogen: | COS-7 cells (African Green Monkey) |
| Specificity: | The antibody reacts with extracellular (N-terminal) domain of standard CD44 (Phagocyte glycoprotein 1), a 80-95 kDa transmembrane glycoprotein (hyaladherin family) present on the most of cells and tissues (leukocytes, endothelial cells, mesenchymal cells, etc.); it is negative on platelets and hepatocytes. |
| Formulation: | PBS with 15 mM sodium azide, approx. pH 7.4 State: Purified State: Liquid purified Ig fraction (> 95% pure by SDS-PAGE) |
| Concentration: | lot specific |
| Purification: | Protein A affinity chromatography |



[View online »](#)

| | |
|----------------|---------------------------------------------------------------------------------------------------------------------------------------------------------------------------------------------------------------------------------------------------------------------------------------------------------------------------------------------------------------------------------------------------------------------------------------------------------------------------------------------------------------------------------------------------------------------------------------------------------------------------------------|
| Conjugation: | Unconjugated |
| Storage: | Store undiluted at 2-8°C. DO NOT FREEZE! |
| Stability: | Shelf life: one year from despatch. |
| Gene Name: | CD44 molecule (Indian blood group) |
| Database Link: | Entrez Gene 960 Human P16070 |
| Background: | CD44 is a transmembrane glycoprotein expressed on the surface of most cells, which serves as a receptor for hyaluronan. CD44 mediates angiogenesis, cell adhesion, proliferation and migration, it is thus important for lymphocyte activation, recirculation and homing, it can thus serve e.g. as a modulator of macrophage recruitment in response to pathogen. Although CD44 functions are essential for physiological activities of normal cells, elevated CD44 expression correlates with poor prognosis in many carcinomas, facilitating tumour growth and metastasis, antiapoptosis and directional motility of cancer cells. |
| Synonyms: | LHR, MDU2, MDU3, MIC4, CDw44, Epican, ECMR-III, HUTCH-I, Heparan sulfate proteoglycan, Hermes antigen, Hyaluronate receptor, PGP-1 |

Product images:



Western blotting analysis of CD44 in MOLT-4 cells (lane 1) and HeLa cells (lane 2) using anti-CD44 (MEM-263) purified; non-reducing conditions.

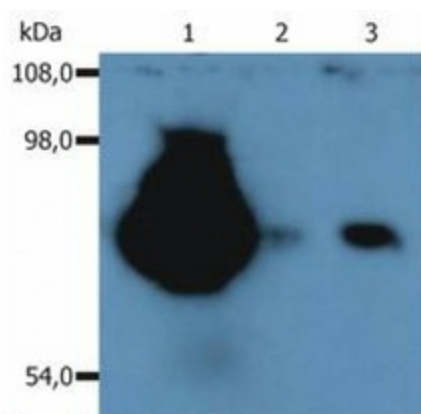


Fig. 1. Western Blotting

Western blot (non-reducing conditions) of isolated peripheral blood lymphocytes of various species using anti-CD44 (MEM-263). Lane 1: lysate of human PBL Lane 2: lysate of canine PBL Lane 3: lysate of porcine PBL