

Product datasheet for **SM262PS**

CD11b Mouse Monoclonal Antibody [Clone ID: OX-42]

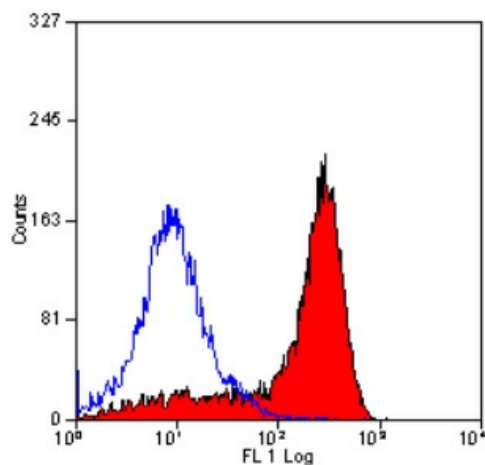
Product data:

Product Type:	Primary Antibodies
Clone Name:	OX-42
Applications:	FC, FN, IHC, IP
Recommended Dilution:	Flow Cytometry: Use 10 µl of 1/50-1/100 diluted antibody to label 10 ⁶ cells in 100 µl. Immunohistochemistry on Frozen Sections: 1/50-1/100. Immunoprecipitation. Immunofluorescence.
Reactivity:	Rat
Host:	Mouse
Isotype:	IgG2a
Clonality:	Monoclonal
Immunogen:	Rat peritoneal macrophages. Spleen cells from immunised BALB/c mice were fused with cells of the NSO/U mouse myeloma cell line.
Specificity:	This antibody recognises the equivalent of Human CD11b, the receptor for the iC3b component of complement. The antibody also labels dendritic cells, granulocytes and microglial cells in the brain (<i>Robinson et al.</i> , 1986). Clone MRC OX-42 has been reported as being suitable for use on paraffin-embedded material following PLP fixation (periodate-lysine-paraformaldehyde). Functionally, clone OX-42 inhibits complement mediated rosettes (<i>Robinson et al.</i> , 1986) as well as inhibit myelin binding and uptake (<i>van der Laan et al.</i> , 1996). We recommend the use of SM262LE for use in functional studies.
Formulation:	PBS, pH 7.2 State: Purified State: Liquid purified IgG fraction from Tissue Culture Supernatant Preservative: 0.09% Sodium Azide
Concentration:	lot specific
Purification:	Affinity Chromatography on Protein G
Conjugation:	Unconjugated



[View online »](#)

Storage:	Store undiluted at 2-8°C for one month or (in aliquots) at -20°C for longer. Avoid repeated freezing and thawing.
Stability:	Shelf life: one year from despatch.
Database Link:	Q63001
Background:	The antigen is expressed on most macrophages, including resident and activated peritoneal macrophages and Kupffer cells and around 35% of alveolar macrophages.
Synonyms:	ITGAM, CR3A, CR-3 alpha chain, Integrin alpha-M, MAC1

Product images:

Staining of Rat peritoneal macrophages with Mouse anti Rat CD11b Antibody (Cat.-No SM262P)