

Product datasheet for **SM2080R**

CD8A Mouse Monoclonal Antibody [Clone ID: 38.65]

Product data:

Product Type:	Primary Antibodies
Clone Name:	38.65
Applications:	FC
Recommended Dilution:	Flow Cytometry: Use 10 µl of neat-1/10 diluted antibody to label 10e6 cells in 100 µl.
Reactivity:	Sheep
Host:	Mouse
Isotype:	IgG2a
Clonality:	Monoclonal
Immunogen:	Ovine efferent lymphocytes. Spleen cells from immunised BALB/c mice were fused with cells of the mouse NS-1 myeloma cell line.
Specificity:	This antibody recognises the Ovine CD8 cell surface antigen, which is expressed by the cytotoxic/suppressor subset of T lymphocytes.
Formulation:	PBS, pH 7.4 containing 0.09% Sodium Azide as preservative; 5% Sucrose and 1% BSA as stabilizer. Label: PE State: Lyophilized purified IgG fraction. Label: R. Phycoerythrin (RPE) Absorption emission: 496 nm / 578 nm
Reconstitution Method:	Restore with 1 ml distilled water
Purification:	Affinity Chromatography on Protein G
Conjugation:	PE
Storage:	Store the antibody undiluted (Prior to and following reconstitution) at 2-8°C. DO NOT FREEZE! This product is photosensitive and should be protected from light.
Stability:	Shelf life: one year from despatch.
Database Link:	Entrez Gene 281060 Bovine P31783



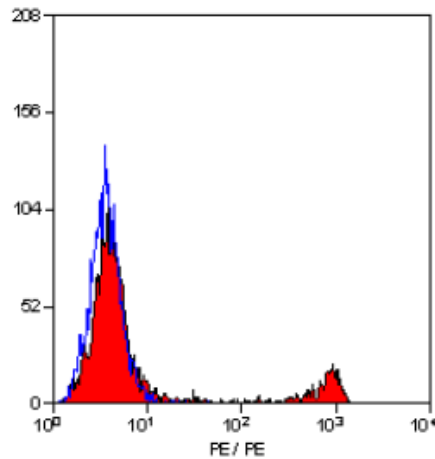
[View online »](#)

Background:

The CD8 antigen is a cell surface glycoprotein found on most cytotoxic T lymphocytes that mediates efficient cell to cell interactions within the immune system. The CD8 antigen, acting as a coreceptor, and the T cell receptor on the T lymphocyte recognize antigen displayed by an antigen presenting cell (APC) in the context of class I MHC molecules. The functional coreceptor is either a homodimer composed of two alpha chains, or a heterodimer composed of one alpha and one beta chain. Both alpha and beta chains share significant homology to immunoglobulin variable light chains.

Synonyms:

CD8 alpha chain, CD8A, MAL

Product images:

Staining of sheep peripheral blood lymphocytes with MOUSE ANTI OVINE CD8:FITC (SM2080R).