

Product datasheet for **SM1797PS**

CD45 (PTPRC) (CD45RB) Mouse Monoclonal Antibody [Clone ID: MEM-55]

Product data:

Product Type:	Primary Antibodies
Clone Name:	MEM-55
Applications:	FC, IHC, IP, WB
Recommended Dilution:	Immunohistochemistry (paraffin sections): No pre-treatment of tissue sections is needed. Flow cytometry: Recommended dilution: 0.5-2 µg/ml.
Reactivity:	Human, Primate
Host:	Mouse
Isotype:	IgG1
Clonality:	Monoclonal
Immunogen:	Human thymocytes and T lymphocytes
Specificity:	The antibody MEM-55 recognizes a siliadase-sensitive epitope of CD45RB, a 180-240 kDa single chain type I membrane glycoprotein, variant of CD45 (CD45RB isoform). CD45RB is expressed on a subset of T lymphocytes, B lymphocytes, monocytes, macrophages, granulocytes and dendritic cells.
Formulation:	PBS, pH~7.4 State: Purified State: Liquid purified Ig fraction (> 95% pure by SDS-PAGE) Preservative: 15 mM Sodium Azide
Concentration:	lot specific
Purification:	Affinity Chromatography on Protein A
Conjugation:	Unconjugated
Storage:	Store undiluted at 2-8°C for one month or (in aliquots) at -20°C for longer. Avoid repeated freezing and thawing.
Stability:	Shelf life: one year from despatch.
Gene Name:	protein tyrosine phosphatase, receptor type C
Database Link:	Entrez Gene 5788 Human P08575



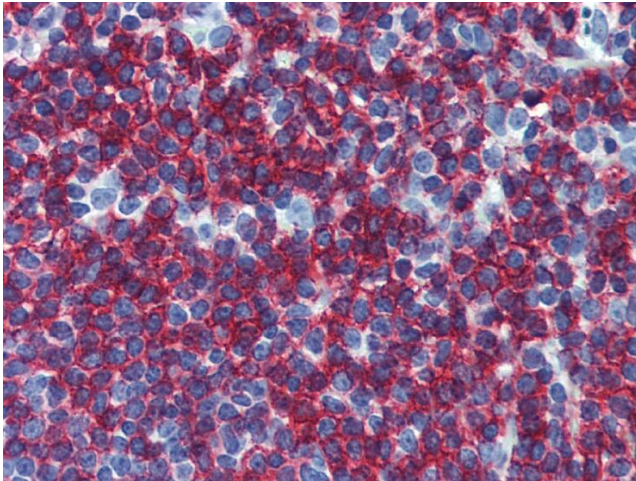
[View online »](#)

Background:

CD45RB is an of a receptor-type protein tyrosine phosphatase, CD45 glycoprotein. CD45 is crucial in lymphocyte development and antigen signaling, serving as an important regulator of Src-family kinases, promotes cell survival by modulating integrin-mediated signal transduction pathway and is also involved in DNA fragmentation during apoptosis. CD45 isoforms differ in their extracellular domains, whereas they share identical transmembrane and cytoplasmic domains. These isoforms differ in their ability to translocate into the glycosphingolipid-enriched membrane domains and their expression depends on cell type and physiological state of the cell. CD45RB is expressed e.g. in microglia and inflammatory cells.

Synonyms:

PTPRC, Leukocyte common antigen, L-CA, T200

Product images:

Immunohistochemistry staining of human small intestine (paraffin-embedded sections) with anti-CD45RB (MEM-55).