

## Product datasheet for **SM1602P**

### CD147 (BSG) Mouse Monoclonal Antibody [Clone ID: MEM-M6/1]

#### Product data:

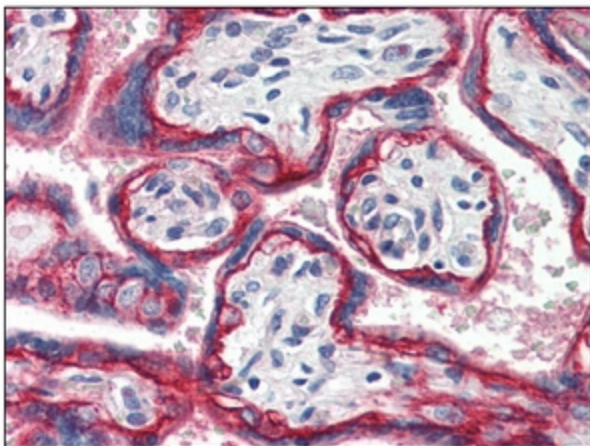
Product Type:	Primary Antibodies
Clone Name:	MEM-M6/1
Applications:	FC, IF, IHC, IP, WB
Recommended Dilution:	<b>Flow Cytometry:</b> Use 10 µl of 1/50-1/100 diluted antibody to label 10 <sup>6</sup> cells or 100 µl whole blood. <b>Immunoprecipitation.</b> <b>Western Blot</b> ( <i>under non-reducing conditions</i> ). <b>Immunohistochemistry on Paraffin Sections:</b> 10 µg/ml. This Basigin antibody was validated for use in immunohistochemistry on a panel of 21 formalin-fixed, paraffin-embedded (FFPE) human tissues after heat induced antigen retrieval in pH 6.0 citrate buffer. After incubation with the primary antibody, slides were incubated with biotinylated secondary antibody, followed by alkaline phosphatase-streptavidin and chromogen.
Reactivity:	Human
Host:	Mouse
Isotype:	IgG1
Clonality:	Monoclonal
Immunogen:	CD147Rg, consisting of the cDNA coding for the hinge region, CH2 and CH3 domains of Human IgG1.
Specificity:	This antibody recognises the CD147 cell surface antigen.
Formulation:	PBS, pH 7.4 State: Purified State: Liquid purified IgG fraction Preservative: 0.09% Sodium Azide
Concentration:	lot specific
Purification:	Affinity Chromatography on Protein G
Conjugation:	Unconjugated
Storage:	Store the antibody undiluted at 2-8°C for one month or (in aliquots) at -20°C for longer. Avoid repeated freezing and thawing.



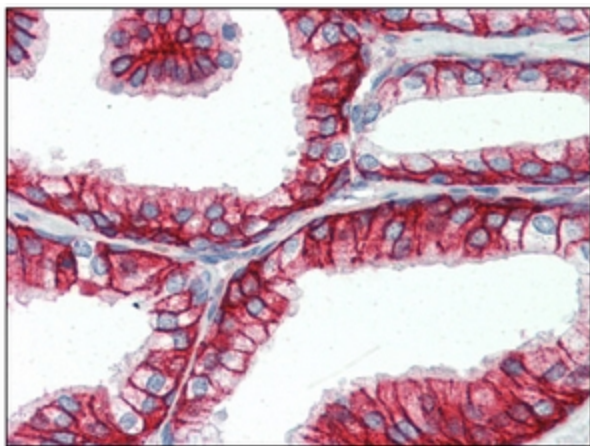
[View online »](#)

Stability:	Shelf life: one year from despatch.
Gene Name:	basigin (Ok blood group)
Database Link:	<a href="#">Entrez Gene 682 Human P35613</a>
Background:	CD147 is a 50-60kD glycoprotein also known as neurothelin and basigin. CD147 is broadly expressed on peripheral blood cells and by endothelial cells. Expression upon T cells is increased following activation.
Synonyms:	Basigin, BSG, EMMPRIN, TCSF

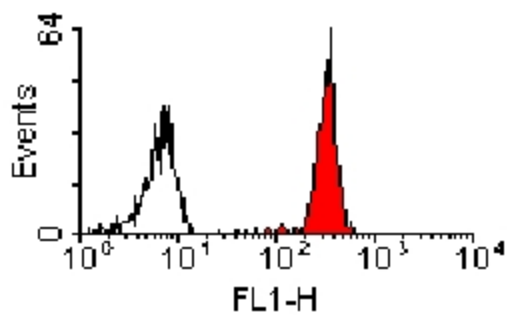
### Product images:



Immunohistochemistry: CD147 Antibody staining Formalin-Fixed, Paraffin-Embedded Human Placenta at 10 ug/ml.



Immunohistochemistry: CD147 Antibody staining Formalin-Fixed, Paraffin-Embedded Human Prostate at 10 ug/ml.



Flow Cytometry: Staining of Human Erythrocytes with Mouse anti Human CD147 Antibody