

Product datasheet for **SM1550F**

Cd68 Rat Monoclonal Antibody [Clone ID: FA-11]

Product data:

Product Type:	Primary Antibodies
Clone Name:	FA-11
Applications:	FC
Recommended Dilution:	Flow Cytometry: Use 10 µl of neat-1/10 diluted antibody to label 1 ⁰ cells in 100 µl (Membrane permeabilisation is required).
Reactivity:	Mouse
Host:	Rat
Isotype:	IgG2a
Clonality:	Monoclonal
Immunogen:	Purified Concanavalin A acceptor glycoprotein from P815 cell line.
Specificity:	The antibody recognizes CD68. SM1550F does not detect surface macrophage markers at low levels in resident peritoneal macrophages which can be enhanced with thioglycollate stimulation.
Formulation:	PBS, pH 7.4 Label: FITC State: Liquid purified IgG fraction from Tissue Culture Supernatant Stabilizer: 1% BSA Preservative: 0.09% Sodium Azide Label: Fluorescein Isothiocyanate Isomer 1
Concentration:	lot specific
Purification:	Affinity Chromatography on Protein G
Conjugation:	FITC
Storage:	Store undiluted at 2-8°C for one month or (in aliquots) at -20°C for longer. This product is photosensitive and should be protected from light. Avoid repeated freezing and thawing.
Stability:	Shelf life: one year from despatch.
Gene Name:	CD68 antigen



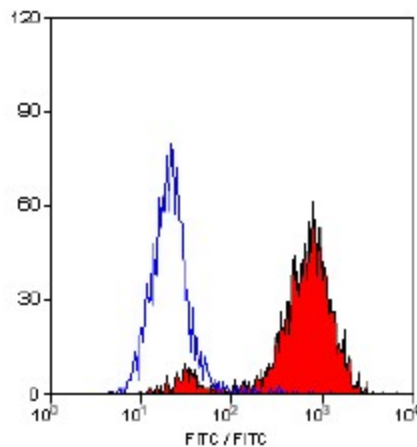
[View online »](#)

Database Link: [Entrez Gene 12514 Mouse P31996](#)

Background: The CD68 antigen is a 37kD transmembrane protein that is post-translationally glycosylated to give a protein of 87-115kD. CD68 is specifically expressed by tissue macrophages, Langerhans cells and at low levels by dendritic cells. It could play a role in phagocytic activities of tissue macrophages, both in intracellular lysosomal metabolism and extracellular cell-cell and cell-pathogen interactions. It binds to tissue- and organ-specific lectins or selectins, allowing homing of macrophage subsets to particular sites. Rapid recirculation of CD68 from endosomes and lysosomes to the plasma membrane may allow macrophages to crawl over selectin bearing substrates or other cells. Macrosialin is the murine homologue of the human macrophage glycoprotein CD68, both are members of the lysosomal-associated membrane protein (lamp) family which are located predominantly within the cells and can be detected by flow cytometry using cell permeabilisation.

Synonyms: Gp110, Macrosialin, Macrophage marker

Product images:



Staining of permeabilised Mouse peritoneal macrophages cells with CD68 antibody -FITC.