

## Product datasheet for **SM1222B**

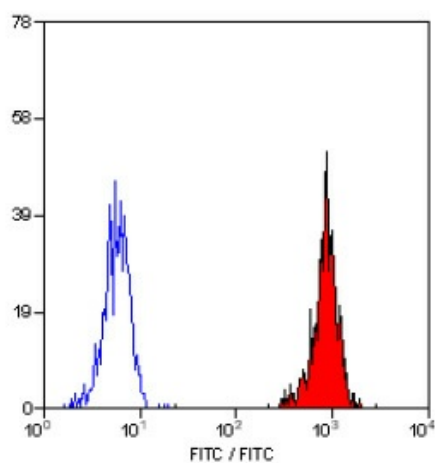
### HLA Class I ABC Mouse Monoclonal Antibody [Clone ID: W6/32]

#### Product data:

Product Type:	Primary Antibodies
Clone Name:	W6/32
Applications:	FC
Recommended Dilution:	Flow Cytometry: Neat - 1/10; Use 10µl of the suggested working dilution to label 10e6 cells or 100µl whole blood.
Reactivity:	Bovine, Feline, Human, Monkey, Primate
Host:	Mouse
Isotype:	IgG2a
Clonality:	Monoclonal
Immunogen:	Purified human tonsil lymphocyte membranes. Spleen cells from immunised BALB/c mice were fused with cells of the mouse NS1/1-Ag4.1 myeloma cell line.
Specificity:	This antibody recognises an antigenic determinant shared among products of the HLA A, B and C loci. Clone W6/32 recognises a conformational epitope, reacting with HLA class I alpha3 and alpha2 domains. MHC class I glycoproteins are found on the surface of almost all nucleated somatic cells.
Formulation:	PBS, pH7.4 containing 0.09% Sodium Azide and 1% Bovine Serum Albumin Label: Biotin State: Liquid purified IgG fraction
Concentration:	lot specific
Purification:	Affinity chromatography on Protein G
Conjugation:	Biotin
Storage:	Store the antibody undiluted at 2-8°C for one month or (in aliquots) at -20°C for longer. Avoid repeated freezing and thawing.
Stability:	Shelf life: one year from despatch.
Synonyms:	MHC class I ABC, HLA Class 2 ABC



[View online »](#)

**Product images:**

Staining of human peripheral blood monocytes with MOUSE ANTI HUMAN HLA ABC:BIOTIN (SM1222B).