

## Product datasheet for **SM1170F**

### CD90 (THY1) Mouse Monoclonal Antibody [Clone ID: F15-42-1]

#### Product data:

Product Type:	Primary Antibodies
Clone Name:	F15-42-1
Applications:	FC
Recommended Dilution:	<b>Flow Cytometry:</b> Use 10 µl of neat antibody to label 1x10 <sup>6</sup> cells in 100 µl. This product is routinely tested in Flow Cytometry on the MOLT4 cell line.
Reactivity:	Human, Monkey
Host:	Mouse
Isotype:	IgG1
Clonality:	Monoclonal
Immunogen:	Purified Human brain Thy-1. Spleen cells from immunised BALB/c mice were fused with cells of the mouse NS-1 myeloma cell line.
Specificity:	SM1170F (Clone F15-42-1) recognizes the Human CD90 cell surface antigen.
Formulation:	PBS, pH 7.4 Label: FITC State: Liquid purified IgG fraction Stabilizer: 1% BSA Preservative: 0.09% Sodium Azide Label: Fluorescein Isothiocyanate Isomer 1
Concentration:	lot specific
Purification:	Affinity Chromatography on Protein G
Conjugation:	FITC
Storage:	Store undiluted at 2-8°C for one month or (in aliquots) at -20°C for longer. This product is photosensitive and should be protected from light. Avoid repeated freezing and thawing.
Stability:	Shelf life: one year from despatch.
Gene Name:	Thy-1 cell surface antigen



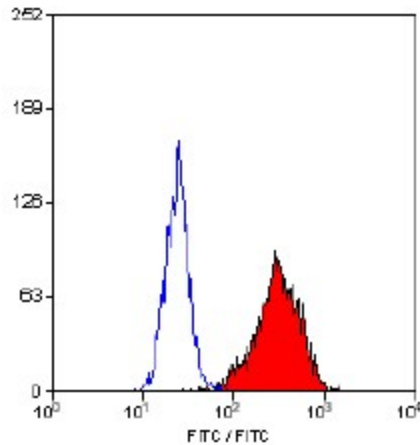
[View online »](#)

Database Link: [Entrez Gene 7070 Human P04216](#)

**Background:** CD90 is a 25kD glycoprotein homologous to rat Thy1. The antigen is expressed by a subset of CD34+ve cells in the bone marrow and by prothymocytes within the thymus. CD90 is also expressed extensively within the brain.

**Synonyms:** Thy-1, THY1, CDw90

**Product images:**



Staining of HUT78 T cells with Mouse anti Human CD90-FITC (F15-42-1)