

Product datasheet for **SC316121**

TLX1NB (NM_001085398) Human Untagged Clone

Product data:

Product Type:	Expression Plasmids
Product Name:	TLX1NB (NM_001085398) Human Untagged Clone
Tag:	Tag Free
Symbol:	TLX1NB
Synonyms:	APT-B7; TD1; TDI
Mammalian Cell Selection:	Neomycin
Vector:	pCMV6-Entry (PS100001)
E. coli Selection:	Kanamycin (25 ug/mL)
Fully Sequenced ORF:	>SC316121 representing NM_001085398. Blue=Insert sequence Red=Cloning site Green=Tag(s)

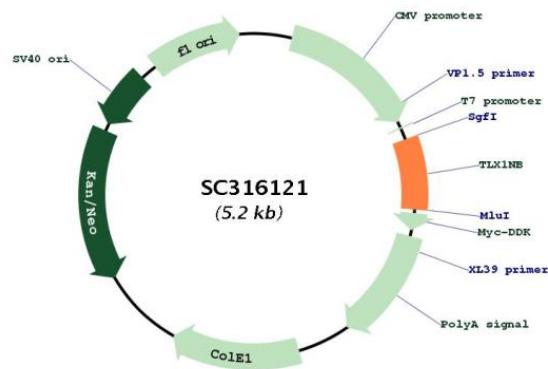
```
GCTCGTTTAGTGAACCGTCAGAATTTTGTAAACGACTCACTATAGGGCGCCGGGAATTCGTCGACTG
GATCCGGTACCGAGGAGATCTGCCGCCCGCATCGCC
ATGGCACCCCTCCAATTGCTCCATCCCTGGGGAAGGCGGGGGGCATGGGCAAGTCAGCACTCTCTCCTT
TCCAAGAGGCCATGGGGCTGGGGAGGGGGCAGAGCCTACTCCCTGGGGTTACTTGAGGGCAGAGCAC
TGGGGAGCCTCCCGAGTGGGGCCCCACTTCCCTTTGCCCGGATGAGTGTTCTCTGACACCAGGT
TCCCCGCCCCACCCTCTAAACAAACAGAAGCATCACCTCCCCACCCTTCTCAAACCCAGAAGGATCG
GTGCCAGGTACCTCAGCTGGAGAAATCCAGAATCCGCCTACGGAGAACACTGAGGAACCTTGGTGGA
GGCAGGGGTGACAGGGGACAGTGA
ACGCGTACGCGGCCGCTCGAGCAGAAACTCATCTCAGAAGAGGATCTGGCAGCAAATGATATCCTGGAT
TACAAGGATGACGACGATAAGGTTTAAACGGCCGGC
```

Restriction Sites: SgfI-MluI



[View online »](#)

Plasmid Map:



ACCN: NM_001085398

Insert Size: 369 bp

OTI Disclaimer: Our molecular clone sequence data has been matched to the reference identifier above as a point of reference. Note that the complete sequence of our molecular clones may differ from the sequence published for this corresponding reference, e.g., by representing an alternative RNA splicing form or single nucleotide polymorphism (SNP).

OTI Annotation: This TrueClone is provided through our Custom Cloning Process that includes sub-cloning into OriGene's pCMV6 vector and full sequencing to provide a non-variant match to the expected reference without frameshifts, and is delivered as lyophilized plasmid DNA.

Components: The ORF clone is ion-exchange column purified and shipped in a 2D barcoded Matrix tube containing 10ug of transfection-ready, dried plasmid DNA (reconstitute with 100 ul of water).

Reconstitution Method:

1. Centrifuge at 5,000xg for 5min.
2. Carefully open the tube and add 100ul of sterile water to dissolve the DNA.
3. Close the tube and incubate for 10 minutes at room temperature.
4. Briefly vortex the tube and then do a quick spin (less than 5000xg) to concentrate the liquid at the bottom.
5. Store the suspended plasmid at -20°C. The DNA is stable for at least one year from date of shipping when stored at -20°C.

RefSeq: [NM_001085398.1](#)

RefSeq Size: 1882 bp

RefSeq ORF: 369 bp

Locus ID: 100038246

Cytogenetics: 10q24.31

MW: 13.4 kDa