

Product datasheet for RR212802

Met (NM_031517) Rat Tagged ORF Clone

Product data:

Product Type:	Expression Plasmids
Product Name:	Met (NM_031517) Rat Tagged ORF Clone
Tag:	Myc-DDK
Symbol:	Met
Synonyms:	Hgfr
Vector:	pCMV6-Entry (PS100001)
E. coli Selection:	Kanamycin (25 ug/mL)
Cell Selection:	Neomycin
ORF Nucleotide Sequence:	>RR212802 representing NM_031517 Red=Cloning site Blue=ORF Green=Tags(s)

TTTTGTAATACGACTCACTATAGGGCGCCGGGAATTCGTCGACTGGATCCGGTACCGAGGAGATCTGCC
GCCGCGATCGCC

ATGAAGGCTCCCACCGCGCTGGCACCTGGCATTCTGCTGCTGCTGACCTTGGCGCAGAGGAGCCATG
GGGAGTGAAGGAGGCCCTAGTGAAGTCTGAGATGAACGTGAACATGAAGTACCAGCTTCCCAACTTCAC
CGCAGAAACCCCATCCAGAATGTCGCTCCATGGGCACCATATTTATCTCGGAGCCACAAACTACATT
TATGTTTTAAATGACAAAGACCTTCAGAAGGTATCTGAGTTCAAGACCGGCCCGTGGTGGAAACCCAG
ATTGTTTTCTTGTGAGGACTGCAGCAGCAAAGCCAATGTGTGAGGAGGTGTTGGAAAGACAACGTCAA
CATGGCGCTGCTTGTGACACTACTATGACGACCAGCTCATCAGCTGTGGCAGCGTCAACAGAGGGACC
TGCCAAAGGCATGTCCTTCTCTGACAATGCTGCCGACATTCAGTCCGAGGTTCACTGCATGTTCTCCC
CACTTGGGAGGAAGAGTCAGGCCAGTGTCCCGACTGTGTAGTGAGTGCCTGGGAGCCAAAGTCCCTCT
GTCTGAAAAGGACCGGTTCAATTTCTCGTGGGAATACGATAAACTCTTCTACCCTCCCGATTAT
TCATTGCATTCAATATCGGTGAGGCGGCTGAAGGAAACCCAGGACGGTTTTAAGTTTTGACAGACCAGT
CCTACATTGATGTCCTGGGAGAATTCGAGATTCTACCCATCAAGTACATACATGCCTTCGAAAGCAA
CCATTTTATCTACTTTCTGACTGTCCAGAAGGAAACCCTAGATGCTCAGACTTTCCATACAAGAATAATC
AGGTTCTGTTCTGTAGACTCTGGTTGCACTCCTACATGGAAATGCCTCTGGAGTGCATTCTGACGGAAA
AAAGAAGAAAGAGATCCACAAGGGAAGAAGTGTAAATATCCTCCAAGCCGCGTATGTCAGTAAACCAGG
GGCCAATCTTGCTAAGCAAATAGGGGCCAGCCGTATGATGACATTCTCTACGGGTGTTTGACAAAAGC
AAGCCAGATTCTGCTGAGCCATGAACCGATCAGCGGTCTGTGCATTCATCAATATGTCAATGACT
TCTTCAACAAGATTGTCAACAAAAACAACGTACGGTGTCTCCAGATTTTATGGACCAACCACGAGCA
CTGTTTCAATAGGACCTGCTGAGAAATTCATCGGGCTGCGAAGTGCAGTACGAGTACCGGACGGAG
TTTACCACAGCGCTGCAGGCTGTGGATTTATTCATGGGCCGGCTCAACCATGTACTCTTGACGTCTATCT
CTACCTTCATCAAGGTGACCTACCATTTGCTAATCTAGGGACATCAGAAGGTCGCTTCATGCAGGTGGT
GCTCTCTCGCACAGCACATTTACCCCCATGTGAATTTCTCTGGATTCCCATCCTGTGTCTCCGGAA
GTTATTGTGCAACATCCATCAAATCAAATGGCTATACCTGGTGGTACAGGGAAGAAGATCACCAAGA



TTCCACTGAATGGCCTAGGCTGTGGCATTTCAGTCCTGCAGTCAGTGTCTCTCTGCCCCCTACTTTAT
ACAGTGTGGCTGGTGCCACAATCGGTGTGTGCATTCCAATGAATGCCCGAGCGGTACATGGACTCAAGAG
ATCTGTCTGCCAGCAGTTTATAAGGTTTTCCCCACTAGTGCACCCCTCGAAGGAGGAACAATGCTGACCA
TATGTGGCTGGGACTTTGGATTCAAGAAGAATAATAAATTTGATTTAAGGAAAACCAAAGTTCTGCTTGG
CAACGAGAGCTGTACCTTGACCTAAGCGAGAGCAGCAAAACGTTGAAATGCACAGTTGGCCCCGCG
ATGAGTGAGCACTTCAATGTGTCTGTGATCGTCTCAAACAGTCGAGAGACAACACAGTACAGTGCCTTTT
CCTATGTGGATCCTGTAATAACAAGTATTTCTCCAAGGTATGGTCCTCATGCCGGAGGCACCTTACTCAC
TTTGACTGGAAAATACCTCAACAGCGGCAATTCTAGACACATTTCAATCGGAGGGAAAACATGTACTTTA
AAAAGTGATCAGATAGCATTCTCGAATGCTACACCCAGGCCACACCGTCTCTGCCGAGTTTCCCGTGA
AATTGAAAATCGACCTGGCTGACCGAGTGACAAGCAGCTTCAGTTACGGGGAAGACCCGTTTGTCTCTGA
AATCCACCCGACCAAACTTTTTATCAGTGGTGAAGCACAATAACGGGGATTGAAAAGAACCTGAATTCA
GTTAGCACCCCAAAGCTGGTAATAGAAGTGCATGACGTGGGCGTGAACACACCGTGGCGTGCCAACATC
GCTCGAGTTCAGAGATCATCTGCTGCACCACTCCTTCCCTGCAACAGCTGGACCTGCAACTCCCCCTGAA
GACCAAAGCCTTCTTCTGCTGGACGGGATCCTTCCAAACACTTTGATCTCACTTATGTACATGATCCT
ATGTTTAAAGCCTTTTAAAAGCCAGTAATGATCTCCATGGCAATGAGAATGTAGTGAAAATTAAGGGAG
ACGATATTGACCCCTGAAGCAGTTAAAGGTGAAGTGTAAAAGTCGGGAATAAGAGCTGTGAGAATCTCCA
CTGGCATTCTGAAGCTTTGTTGTGTACGGTCCCCAGTGACCTGCTGAAGCTGAACGGCGGCGAGCTAAAT
ATAGAGTGAAGCAAGCAGTCTCTTCAACTGTCCTTGGAAAAGTGATCGTTCAACCGGATCAGAATTTTG
CAGGATTGATCATTGGTGCAGTCTCAATATCAGTGGTAGTTTTGTTAGTATCCGGGCTCTTCTGTGGCT
GAGAAAGAGAAAGCATAAAGATCTGGGCAGTGAATTAGTTCGCTATGACGCAAGAGTACACACTCCTCAT
TTGGATAGGCTTGAAGTGCCGAAGTGAAGCCAACTACAGAGATGGTCTCAAATGAGTCTGTAGACT
ACAGAGCTACTTTCCAGAAGACCAGTTTCCAACTCCTCTCAGAATGGAGCCTGCAGACAAGTGCAGTA
TCCACTGACAGATCTGTCCCCATCCTGACGAGTGGAGACTCTGATATATCCAGCCATTACTACAAAAC
ACTGTTTACATTGACCTCAGCGCTCTAAATCCAGAGCTGGTCCAAGCGGTGCAGCACGTAGTATTGGAC
CCAGTAGCCTGATTGTGCATTTCAATGAAGTCATAGGAAGAGGGCATTGTTGGCTGTGTCTATCATGGGAC
TTTGTGGACAGTGACGAAAAGAAAATCACTGTGCTGTGAAATCCTTGAATAGAATCAGATATAGAA
GAAGTCTCCAGTTTCTGACTGAGGGAATCATCATGAAAGATTTAGCCACCCCAATGTTCTCTCACTCT
TGGGAATCTGCCTGCGGAGTGAAGGTCCCCTCTGGTGGTTCTGCCCTATATGAAGCACGGAGATCTTGC
CAATTTTATTGAAAACGAGACTCATAACCCAAGTGTGAAAGATCTTATAGGATTCGGTCTTCAAGTAGCC
AAGGGCATGAAAATCTTGCCAGCAAAAAGTTTGTCCACAGAGACTTAGCTGCAAGAAACTGCATGTTGG
ATGAAAATTTCACTGTCAAGGTTGCTGATTTCCGTCTTCCAGAGACATGTACGACAAGAGTATTATAG
CGTCCACAACAAAACGGGTGCGAAACTACCGGTGAAGTGGATGGCTTTAGAGAGTCTGCAGACGCAAAAAG
TTCACCACCAAGTCAGACGTGTGGTCTTCCGTGTGCTTCTCTGGGAGCTCATGACGAGAGGAGCCCTC
CTTATCCTGACGTGAACACATTTGATATCACTATATACCTGTTGCAAGGCAGAAGACTCTTGAACCAGA
GTACTGTCCAGACGCCTTGATGAAGTGATGCTAAAATGCTGGCACCCCAAGCAGAAAATGCGCCCATCG
TTTTCTGAACTGGTCTCCAGAATATCCTCAATCTTCTCCACTTTCATTGGCGAGCACTATGTCCATGTGA
ACGCTACTTATGTGAATGTAATGTGTTGCTCCATATCCTTCTCTGTTGCCATCCCAAGACAACATTGA
CGCGAAGCGAACACA

ACGCGTACGCGGCGCTCGAGCAGAACTCATCTCAGAAGAGGATCTGGCAGCAAATGATATCCTGGATT
ACAAGGATGACGACGATAAGGTTTAA

Protein Sequence: >RR212802 representing NM_031517
 Red=Cloning site Green=Tags(s)

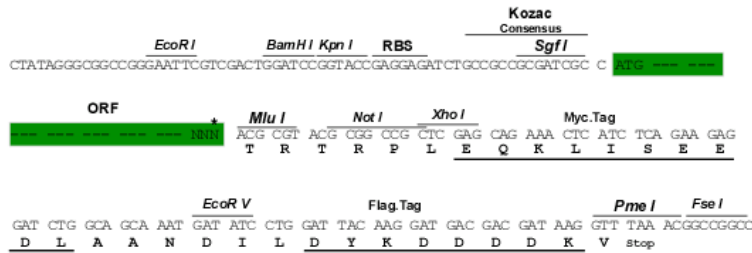
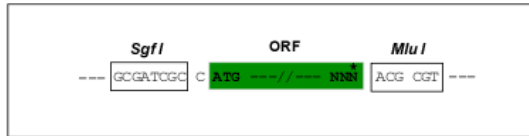
MKAPTALAPGILLLLLTLAQRSHGECKEALVKSEMNVNMKYQLPNFTAETPIQNVVLHGHHIYLGATNYI
 YVLNDKDLQKVSEFKTGPVVEHPDCFCQDCSSKANVSGGVWKNVNMALLVDTYYDDQLISCGSVNRGT
 CQRHVLPPDNAADIQSEVHCFMFLAEEESGQCPDCVVSALGAKVLLSEKDRFINFFVGNINSSYPDY
 SLHSISVRRRLKETQDGFKFLTDQSYIDVLGEFRDSYPIKIYIHAFESNHFIYFLTVQKETLDAQTFHTRII
 RFCSVDSGLHSYEMPLECILTEKRRKRSTREEVFNILQAAYVSKPGANLAKQIGASPYDDILYGVFAQS
 KPDSAEPMNRSAYCAFFIKYVNDFFNKIVNKNVVRCLQHFYGNHEHCFNRLLRNSSGCEVRSDEYRTE
 FTTALQAVDLFMGRNLHVLLTSISTFIKGLTIANLGTSEGRFMQVVLRSRTAHFTPHVNFLLDSHPVSPE
 VIVEHPSNQNGYTLVVTGKIKITKIPNLGLGCGHFQSCSQCLSAFYIQCWGNRCVHSNECPSGTWTQE
 ICLPAVYKVFPTSAPLEGGTMLICGWDFGFKNNKFDLRKTKVLLGNESCTLTLSESTNTLKCTVGPA
 MSEHFNVSVIVSNSRETTQYSAFSYVDPVITSISPRYGPHAGGTLTLTGKYLNSGNSRHSISGGKTCTL
 KSVSDSILECYTPGHTVSAEFPVKLKIDLADRVTSSFYGEDPFVSEIHPKSFISGGSTITIGIKNLNS
 VSTPKLVIEVHDVGVNYTVACQHRSSSEIICCTTPSLQQLDLQLPLKTKAFFLLDGILSKHFDLTVVHDP
 MFKPFKPMISMGNENVVEIKGDDIDPEAVKGEVLKVGKNSCENLHWHSEALLCTVPSDLLKLNNGELN
 IEWKQAVSSTVLGKVIYQPDQNFAGLIIGAVSISVVVLLVSGFLWLRLRKRKHDLGSELVRYDARVHTPH
 LDRLVSARSVSPTEMVSNESVDYRATFPEDQFPNSSQNGACRQVQYPLTDLSPILTSGSDISSPLLQN
 TVHIDLALNPELVQAVQHVVIGPSSLIVHFNEVIGRGHFGCVYHGTLTLDSDGKKIHCAVKSINRITDIE
 EVSQFLTEGIIMKDFSHPNVLSLLGICLRSEGSPLVVLPMKHGDLRNFIRNETHNPTVKDLIGFGLQVA
 KGMKYLASKKFVHRDLAARNCMLEKFTVKVADFGLARMYDKEYYSVHNKTGAKLPVKWMALESQTQK
 FTTKSDVWSFGVLLWELMTRGAPPYPDVNTFDITIIYLLQGRRLQPEYCPDALYEVMLKCWHPKAEMRPS
 FSELVSRISSEIFSTFIGEYHVHNATYVNVKCVAPYPSLLPSQDNIDGEANT

TRTRPLEQKLISEEDLAANDILDYKDDDDKV

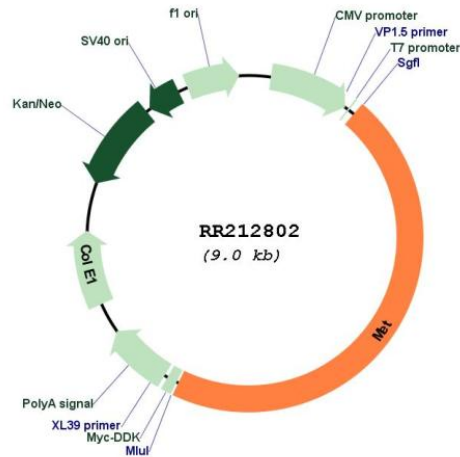
Restriction Sites:
 Cloning Scheme:

SgfI-MluI

Cloning sites used for ORF Shuttling:



* The last codon before the Stop codon of the ORF

Plasmid Map:


ACCN: NM_031517

ORF Size: 4146 bp

OTI Disclaimer: The molecular sequence of this clone aligns with the gene accession number as a point of reference only. However, individual transcript sequences of the same gene can differ through naturally occurring variations (e.g. polymorphisms), each with its own valid existence. This clone is substantially in agreement with the reference, but a complete review of all prevailing variants is recommended prior to use. [More info](#)

OTI Annotation: This clone was engineered to express the complete ORF with an expression tag. Expression varies depending on the nature of the gene.

Components: The ORF clone is ion-exchange column purified and shipped in a 2D barcoded Matrix tube containing 10ug of transfection-ready, dried plasmid DNA (reconstitute with 100 ul of water).

Reconstitution Method:

1. Centrifuge at 5,000xg for 5min.
2. Carefully open the tube and add 100ul of sterile water to dissolve the DNA.
3. Close the tube and incubate for 10 minutes at room temperature.
4. Briefly vortex the tube and then do a quick spin (less than 5000xg) to concentrate the liquid at the bottom.
5. Store the suspended plasmid at -20°C. The DNA is stable for at least one year from date of shipping when stored at -20°C.

RefSeq: [NM_031517.2](#), [NP_113705.1](#)

RefSeq Size: 4187 bp

RefSeq ORF: 4149 bp

Locus ID: 24553

UniProt ID: [P97523](#)

Cytogenetics: 4q21
MW: 153.8 kDa
Gene Summary: hepatocyte growth factor receptor; functions as a heterodimeric tyrosine kinase [RGD, Feb 2006]