

Product datasheet for RR211714

Abcb1a (NM_133401) Rat Tagged ORF Clone

Product data:

Product Type:	Expression Plasmids
Product Name:	Abcb1a (NM_133401) Rat Tagged ORF Clone
Tag:	Myc-DDK
Symbol:	Abcb1a
Synonyms:	Abcb1; Mdr1a
Mammalian Cell Selection:	Neomycin
Vector:	pCMV6-AC-Myc-DDK (PS100007)
E. coli Selection:	Ampicillin (100 ug/mL)
ORF Nucleotide Sequence:	>RR211714 representing NM_133401. Blue=ORF Red=Cloning site Green=Tag(s)

```
GCTCGTTTAGTGAACCGTCAGAATTTTGTAAACGACTCACTATAGGGCGCCGGGAATTCGTCGACTG
GATCCGGTACCGAGGAGATCTGCCGCCGCGATCGCC
ATGGAGCTCGAAGAAGACCTTAACGGAAGAGCAGACAAGAAGCTTCTCAAAGATGGGCAAAAAGAGTAAA
AAGGAGAAGAAAAGAAAAGAAACCAGCGTCAGTGTGCTCACAATGTTTCGCTATGCAGGTTGGCTGGAC
AGATTTTACATGCTGCTGGAACTCTGGCGCCATTATCCATGGAATTCGCTCCCCTTATGATGCTG
GTCTTTGGAGACATGACAGATAGCTTTGCAAATGTAGGAAACAACCGTAGTATGAGTTTCTACAATGCT
ACAGACATATATGCCAAGCTGGAGGACGAAATGACCACGTACGCCTACTATTACACGGGCATTGGTGCC
GGTGTGCTCATCGTTGCCTACATCCAGGTTTCACTTTGGTGCCTGGCAGCTGGGAGACAAAATACACAAG
ATTAGGCAGAAGTTTTTCCATGCCATCATGAATCAGGAGATAGGCTGGTTTGACGTGCATGACGTTGGG
GAGCTCAACACCCGGCTCACAGATGACGTCTCCAAAATTAATGAAGGAATTGGTGACAAAATTGGAATG
TTCTTTTAGGCAATGGCAACATTTTTTGGTGGTTTTATAATAGGATTTACTCGCGGCTGGAAGCTAACT
CTTGATTTTTGGCCATCAGCCCTGTTCTTGGACTGTCAGCTGGTATTTGGGCAAAGATATTGTCTTCA
TTTACTGATAAGGAACCTCAGGCTTATGCAAAAAGCTGGAGCAGTTGCTGAAGAAGCTTAGCAGCCATC
AGAAGTGTGATTGCCTTTGGAGGACAAAAGAAGGAAGTGAAGGTACAATAACAATTTGGAAGAAGCT
AAAAGGCTTGGGATAAAGAAAGCTATCACGGCCAACTTTCCATGGTGCAGCTTTTCTGCTTATCTAT
GCATCATATGCTCTGGCATTCTGGTATGGGACTTCCTTGGTGCATCTCAAAGAATACACTATTGGACAA
GTGCTCACTGTCTTTTTTCTGTATTAATTGGAGCATTCAAGTGTGGGCAGGCATCTCCAAATATTGAA
GCCTTCGCCAATGCTAGAGGAGCAGCTTATGAAGTCTTCAGTATAATTGATAAATAGCCAGTATAGAC
AGCTTCTCAAAGAGTGGGCACAAACCCGACAACATACAAGGAAATTTGGAATTCAAAAATTTCACTTC
AGTTACCCGTCTCGAAAAGACGTTTCAGATCTTGAAGGGCCTCAACCTGAAGGTGAAGAGCGGGCAGACG
GTAGCCCTGGTTGGCAACAGTGGCTGTGGGAAAAGCACAAGTGTCCAGCTGCTGCAGAGGCTCTACGAC
CCCATAGAGGGCGAGGTCAGTATCGACGGACAGGACATCAGGACCATCAATGTGAGGTATCTGCGGGAA
ATCATTGGGGTGGTGTGAGTCAGGAACCCGTGCTGTTTCCACCACAATTGCCGAAAACATTCGCTATGGC
CGAGAAAACGTCACCATGGATGAGATAGAGAAAGCTGTCAAGGAAGCCAATGCCTATGATTTTCATCATG
```



[View online »](#)

AAACTGCCCCACAAATTTGACACCCTGGTTGGTGAGAGAGGGGCGCAGCTGAGTGGGGGACAGAAACAG
AGGATCGCCATTGCCCGGGCCCTGGTCCGCAACCCCAAGATCCTTTTGGTGGATGAGGCCACGTCAGCC
TTGGACACAGAAAGCGAAGCCGTGGTTCAGGCCGCTCTGGATAAGGCTAGAGAAGGCCGGACCACCATT
GTGATAGCTCACCCTTGTCTACAGTTCGCAATGCTGACGTCATTGCTGGTTTTGATGGTGGTGTCTATT
GTGGAGCAAGGAAATCATGATGAGCTCATGAGAGAGAAAGGAATTAATCAAACTTGTCTGACTCAG
ACAGCAGGAAATGAAATTGAATTAGGAAATGAAGCTTGAATCTAAAGATGGAATTGATAATGTGGAC
CATGTCTTCAAAAGATTCCAGGATCCAGTCTAATAAGAAGAAGATCAACTCGCAAAGCATCCGTGGGCCA
CATGATCAAGACGGGAACTTAGCACCAAAGAGGCTCTGGATGACGACGTACCTCCAGCTTCTTTTGG
CGGATCTGAAGTTGAATCAACTGAATGGCCTTATTTTGGTGGTGTATTTTGTCCATAATAAAT
GGAGGCTTGAACCAGCATTCTCCATAATATTTCAAAGGTTGTAGGGGTTTTTACAAAAATGACACC
CCTGAAATCCAGCGGCAGAACAGCAACTGTGTTTCTTTATTGTTCTGATCCTTGGGATCATCTCTTTC
ATTACGTTTTTCTTTCAGGGCTTACATTTGGCAAAGCTGGAGAGATCCTCACCAAGCGACTCCGATAC
ATGGTCTTCAAATCCATGCTGAGACAGGACATAAGCTGGTTTGTGACCCATAAAACACCACAGGAGCG
CTGACCACCAGGCTTGCATGACGCTGCTCAAGTGAAGGGGCTACAGGGTCTAGGCTTGTCTGTTATT
ACCCAGAACATAGCAAATCTTGGGACAGGCATCATCATATCCCTGATCTACGGCTGGCAATTGACACTT
TACTCTAGCAATTGTTCCCATATTGCTATAGCAGGAGTGGTTGAAATGAAAAATGTTGCTGGACAA
GCGCTGAAAGATAAGAAGGAACTAGAAGTTCTGGGAAGATCGCTACAGAAGCAATTGAAAACTTTCGC
ACTGTCGCTCTTTGACTCGGGAGCAGAAGTTGAAACTATGTATGCCAGAGCTTGAGATACCATAC
AGAAATGCTTTGAAGAAAGCGCAGCTCTTTGGGATCACTTTCTCCTTACCCAGGCCATGATGATTTTC
TCCTATGCTGCTGTTTCCGGTTTGGTGCCACTTGGTGGCAGGAACTCATGACATTTGAAAAATGTT
CTGTTAGTATTCTCAGCTATTGTCTTTGGTGCCATGGCAGTGGGGCAGGTCAGTTCATTCGCTCCTGAC
TACGCGAAAGCCAAAGTCTCGGCATCCACATCATCAGGATCATTGAGAAAAATCCCTGAGATTGACAGC
TACAGCACGGAGGGCTTGAAGCCTAATATGTTGGAAGGAAATGTGAAATTTAATGGAGTCATGTTCAAC
TATCCCACCCGACCCAACATCCCAGTGCTTCAGGGGCTGAGCCTAGAGGTGAAGAAAGGGCAGACGCTG
GCCCTCGTGGGCAGCAGTGGCTGCGGGAAGAGTACAGTGGTCCAGCTGCTTGAAGCCTTCTATGACCCC
ATGGCCGGAACAGTGTCTTAGATGGCAAAGAAATAAAGCAACTCAATGTCCAGTGGCTCCGCGCCAC
CTGGGCATTGTGTCCAGGAGCCATCCTGTTGACTGCAGCATCGCCGAGAACATTGCCTACGGAGAC
AACAGCCGTGTCGTGTCTCATGAGGAGATCGTGAAGGCAGCAAGGAGGCCAACATCCACCAGTTCATC
GACTCACTGCCTGAGAAATACAACACCAGAGTGGGAGACAAAGGGACTCAGCTGTCGGGCGGGCAGAAG
CAGCGCATCGCCATCGCGCGGCCCTCGTCAGACAGCCTCACATTTACTTCTGGATGAAGCGACATCA
GCTCTGGATACGGAGAGTAAAAGTCTGTCAGGAAGCGCTGGACAAAGCCAGGGAAGGCCGCACCTGC
ATTGTGATCGCGCACCGCTGTCCACCATCCAGAACGCAGACTTGATCGTGGTGATTGAGAACGGCCAG
GTCAAGGAGCACGGCACCCACCAGCAGCTGCTGGCCAGAAAGGCATCTATTTCTCGATGGTCAAGTGTG
CAGGCTGGAGCAAAGCGCTCA
ACGCGTACGCGGCCGCTCGAGCAGAACTCATCTCAGAAGAGGATCTGGCAGCAAATGATATCCTGGAT
TACAAGGATGACGACGATAAGGTTTAAACGGCCGGC

Protein Sequence: >Peptide sequence encoded by RR211714
 Blue=ORF Red=Cloning site Green=Tag(s)

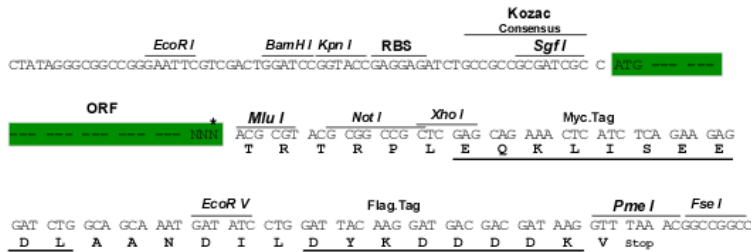
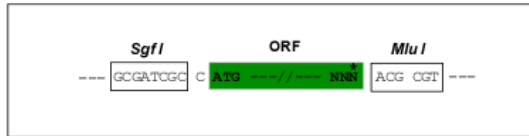
```

MELEEDLNGRADKNFSKMGKSKKKEKKEKPAVSVLTMFRYAGWLDRFYMLLGLTAAIIHGIALPLMML
VFGDMTDSFANVGNRSMFSYNATDIYAKLEDEMITYYYTIGIGAGVLIVAYIQVSLWCLAAGRQIHK
IRQKFFHAIMNQEIGWFDVHDVDELNTRLTDDVSKINEGIGDKIGMFFQAMATFFGGFIIGFTRGWKLT
LVILAISPVLGLSAGIWAKILSSFDTKELQAYAKAGAVAEVLAARTVIAFGGQKKELERYNNNLEEA
KRLGIKKAITANISMGAAFLLIYASYALAFWYGTSLVISKEYTIQQLTVFFSVLIGAFSVGQASPNI
AFANARGAAYEVFSIIDNKPSIDFSKSGHKPDNIQGNLEFKNIHFSYPSRKDVQILKGLNLKVKSGQT
VALVGNSSGCGKSTTVQLLQRLYDPIEGEVSIDGQDIRTINVRYLREIIGVVSQEPVLFATTIAENIRYG
RENVTMDEIEKAVKEANAYDFIMKLPKFDLTVGERGALSGGQKQRIAIARALVRNPKILLDEATSA
LDTESEAVVQAALDKAREGRTTIVIAHRLSTVRNADVIAGFDGGVIVEQGNHDELMREKGIYFKLVMTQ
TAGNEIELGNEACESKDGIDNVDMSKDSGSSLIRRRSTRKSIRGPHDQDGELSTKEALDDVPPASFW
RILKLNSTEWPFVVGVCIAIINGLQPAFSIIFSKVGVFTKNDTPEIQRQNSNLSLLFLILGISF
ITFFLQGFTFGKAGEILTKRLRYMFKSMLRQDISWFDPKNTTGALTTRLANDAAQVKGATGSRLAVI
TQNIANLGTGIIISLIYQWQLTLLLLAIVPIIAIAGVEMKMLSGQALKDKKELEGSGKIAIEIENFR
TVVSLTREQKFETMYAQLQIPYRNALKKAHVFGITFSFTQAMMYFSYAACFRFGAYLVARELMTFENV
LLVFSIAIVFGAMAVGQVSSFAPDYAKAKVSASHIIRIEKIPIDSYSYTEGLKPNMLEGNVYKFNMGVFN
YPRPNIPVLQGLSLEVKKGQTLALVSSGCGKSTVVQLLERFYDPMAGTVFLDGKEIKQLNVQWLRRAH
LGIVSQEPILFDCSIAENIAYGDNRRVSHHEIVKAAKEANIHQFIDSLPEKYNTRVGDKGTLGGQK
QRIAIARALVRQPHILLDEATSALDTESEKVVQEALDKAREGRTCIVIAHRLSTIQNADLIVVIQNGQ
VKEHGTHQQLLAQKGIYFSMVSQAGAKRS
TRTRPLEQKLISEEDLAANDILDYKDDDDKV
  
```

Restriction Sites: SgfI-MluI

Cloning Scheme:

Cloning sites used for ORF Shuttling:



* The last codon before the Stop codon of the ORF

ACCN: NM_133401

ORF Size: 3816 bp

OTI Disclaimer: Due to the inherent nature of this plasmid, standard methods to replicate additional amounts of DNA in E. coli are highly likely to result in mutations and/or rearrangements. Therefore, OriGene does not guarantee the capability to replicate this plasmid DNA. Additional amounts of DNA can be purchased from OriGene with batch-specific, full-sequence verification at a reduced cost. Please contact our customer care team at custsupport@origene.com or by calling 301.340.3188 option 3 for pricing and delivery.

The molecular sequence of this clone aligns with the gene accession number as a point of reference only. However, individual transcript sequences of the same gene can differ through naturally occurring variations (e.g. polymorphisms), each with its own valid existence. This clone is substantially in agreement with the reference, but a complete review of all prevailing variants is recommended prior to use. [More info](#)

OTI Annotation: This clone was engineered to express the complete ORF with an expression tag. Expression varies depending on the nature of the gene.

Components: The ORF clone is ion-exchange column purified and shipped in a 2D barcoded Matrix tube containing 10ug of transfection-ready, dried plasmid DNA (reconstitute with 100 ul of water).

Reconstitution Method:

1. Centrifuge at 5,000xg for 5min.
2. Carefully open the tube and add 100ul of sterile water to dissolve the DNA.
3. Close the tube and incubate for 10 minutes at room temperature.
4. Briefly vortex the tube and then do a quick spin (less than 5000xg) to concentrate the liquid at the bottom.
5. Store the suspended plasmid at -20°C. The DNA is stable for at least one year from date of shipping when stored at -20°C.

RefSeq: [NM_133401.1](#), [NP_596892.1](#)

RefSeq Size: 4927 bp

RefSeq ORF: 3819 bp

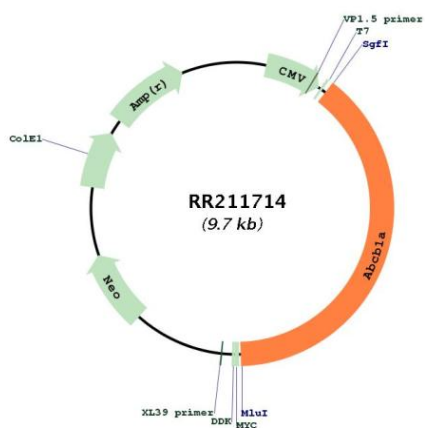
Locus ID: 170913

Cytogenetics: 4q12

MW: 140.3 kDa

Gene Summary: ATP-binding cassette (ABC) multiple drug transporter P-glycoprotein that is activated during liver regeneration and hepatocarcinogenesis [RGD, Feb 2006]

Product images:



Circular map for RR211714