

## Product datasheet for **RR208980**

### Top2a (NM\_022183) Rat Tagged ORF Clone

#### Product data:

**Product Type:** Expression Plasmids  
**Product Name:** Top2a (NM\_022183) Rat Tagged ORF Clone  
**Tag:** Myc-DDK  
**Symbol:** Top2a  
**Vector:** pCMV6-Entry (PS100001)  
**E. coli Selection:** Kanamycin (25 ug/mL)  
**Cell Selection:** Neomycin  
**ORF Nucleotide Sequence:** >RR208980 representing NM\_022183  
Red=Cloning site Blue=ORF Green=Tags(s)

TTTTGTAATACGACTCACTATAGGGCGGCCGGAATTCGTCGACTGGATCCGGTACCGAGGAGATCTGCC  
GCC**CGATCGCC**

ATGGAAGTGTACCATTGCAGCCTGTAATGAAAATATGCTACTCAACAAAAAGAAGAATGAAGATGGCA  
AGAAAAGACTGTCGGTTGAAAGAATCTATCAGAAAAAACCAACTGGAACATATACTGCTCCGCCAGCA  
TACCTACATCGGCTCTGTGGAGTTAGTGACCCAGCAAATGTGGTTTACGATGAAGATGTTGGTATTAAC  
TACAGGGAAGTCACTTTTGTTCCTGGTTGTATAAAATCTTTGATGAAATTCTAGTTAATGCTGCTGATA  
ACAAACAAGGGACCCAAAAATGTCTTGCAATTAGAGTCACAATGATGCGAAATAATTTAATTAGTATATG  
GAATAATGAAAAGGAATTCCTGTTGTTGAACACAAAGTGAGAAAAATGTATGTCCAGCTCTCATATTT  
GGACAGCTCCTGACCTCCAGTAACACGATGATGATGAGAAGAAAGTGACAGGTGGTCAAAATGGCTATG  
GAGCTAACTGTGAACATATTCAGCACCAATTTACTGTGAAACAGCCAGTAGGGAATACAAGAAAAAT  
GTTCAAACAGACATGGATGGATAACATGGGAGAGCTGGTGACATGGAGCTCAAGCCCTTAGCGGAGAG  
GATTACACGTGTATTACCTTCAGCCTGACTTATCTAAGTTTAAAATGCAAAGCCTGGACAAAGATATTG  
TCGCACTGATGGTCAGAAGAGCATACGATATTGCTGGTCCACCAAAGATGTAAGTCTTTCTTAATGG  
AAACAGGCTGCCAGTCAAAGGGTCCGTAGTTACGTGGATATGATTTGAAGGATAAGGTTGATGAAACT  
GGGAACGCTCTGAAGGTGGTGCATGAACAAGTAAATCCCCGGTGGGAAGTGTGCTTAAACAATGAGCGAGA  
AAGGCTTTCAGCAGATTAGCTTCGTCAACAGCATCGCTACTTCTAAGGTTGGCAGACATGTCGATTATGT  
AGCCGATCAGATTGTGAGTAAACTCGTTGATGTGGTGAAAAAGAAGAACAAGGGAGGTGTTGCAGTGAAG  
GCCGATCAGGTGAAGAATCATATGTGGATTTTGGAAATGCGGTAATTGAAAACCAACCTTTGATTCTC  
AAACAAAAGAAAACATGACTTTACAAGCCAAGAGCTTTGGATCAACTGTCAATTAAGTAAAAATTCAT  
CAAAGCTGCAATTGGTTGTGGTATTGTGAAAGCATACTAAACTGGGTGAAGTTTAAAGCCCAATCCAA  
TTAAACAAGAAGTGTTCAGCTGTAAAACATAACAGGATCAAGGGAATCCCAAACTTGACGACGCCAATG  
ACGCAGGGAGCCGAAAACCTGCTGAATGCACACTTATCCTGACTGAAGGGGACTCAGCCAAAACCTGGC  
AGTCTCAGGACTTGGAGTGGTTGGAAGAGACAAATATGGGGTGTCCCTCTCAGAGGAAAAATACTCAAT  
GTGCGAGAAGCTTCTCATAAACAGATCATGAAAAATGCTGAAATTAACAATATCATCAAGATTGTGGGGC  
TTCAGTACAAGAAAAACTATGAGGATGAAGATTCATTGAAAACCTTTCGTTATGGGAAGATCATGATTAT  
GACAGATCAGGACCAAGATGGTCCACATCAAAGGCTTGCTGATCAATTTATCCATCACAATTGGCCA

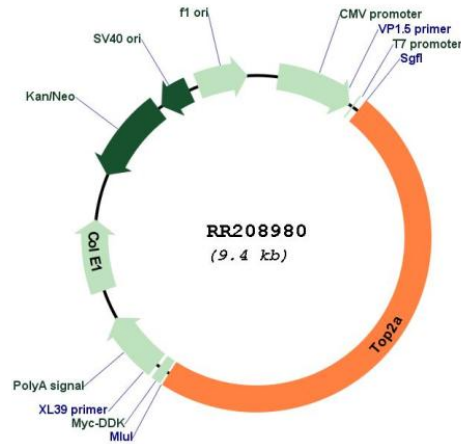


[View online »](#)

TCTCTTCTGCGACATCGTTTTCTAGAAGAATTTATCACTCCTATTGTAAAGGTATCTAAAAACAAGCAAG  
AAATAGCATTCTACAGTCTTCCCAGTTTGAAGAATGGAAGAGTACAAATCCAAATCACAAAAATGGAA  
AGTCAAGTACTACAAAGTTTGGGCACGAGCACATCAAAGGAAGCTAAGGAGTATTTTGCAAAATATGAAA  
CGACATCGTATTCAGTTCAAATACTCTGGCCCTGAAGACGATGCTGCGATCAGCCTGGCCTTTAGTAAAA  
AACAGGTGATGATCGAAAGGAATGGTTAACTAATTTTCATGGAAGATAGAAGACAGCGGAAGTTACTTGG  
CCTTCTGAGGATTATTTGTATGGACAAACCACATGTACCTGACCTATAATGATTTTCATTAACAAGGAA  
CTTATCCTCTTTTCAAACCTCTGATAATGAAAGATCTATCCCATCTATGGTAGATGGTTTGAACCCAGGTC  
AGAGAAAAGGTTTTGTTTACTTGTTCAAACGGAATGACAAGCGAGAGGTGAAAGTTGCCAGTTAGCTGG  
GTCAGTGGCAGAAATGTCCTCTTATCACCATGGTGAAGATGTCGCTGATGATGACCATTATCAATTTGGCT  
CAGAATTTTGTGGGTAGCAATAATTTGAACCTTCTACAGCCTATTGGTCAGTTTGGTACCAGGCTGCATG  
GTGGCAAGGACTCAGCCAGCCCTAGGTACATCTTTACAATGCTCAGCCCTTTGGCTCGTTGTTATTTCC  
ATCAAAGATGATCACACGTTACGGTTTCTGTATGACGACAACCAGCGTGTGAGCCTGAATGGTACATC  
CCTATTATACCCATGGTCTGATAAATGGTCTGAGGGAATTGGTACTGGGTGGTCTGCAAAATCCCCA  
ACTTTGATGTTTCGTGAAGTCGTAATAATATCAGGCGGCTGTTGGATGGAGAAGAGCCTCTGCCATGCT  
CCCAAGTTATAAGAATTACAAAGTACTATTGAAGAACTGGCTTCAAATCAGTATGTGATTAATGGAGAA  
GTAGCTATTCTGAATCCACAACCATTTAGATCACTGAGCTTCCCATCAGAACATGGACCAGACATATA  
AGGAACAGGTTCTAGAACCATGTTGAATGGCACCAGAGAAGACACCCCTCTAATAACAGACTATAGGGA  
ATACCACACAGATACCACTGTGAAGTTTGTCAAAAGTACTGAAGAAAAATTGGCAGAGGCAGAGAGA  
GTGGGACTACACAAAGTCTTCAAACCCAGACTAGTCTCACTTGAACCTCTATGGTACTTTTTGACCATG  
TTGTTGTTTAAAGAAATATGACACTGTGTTGGATTTCTAAGAGACTTCTTTGAGCTCAGGCTTAAATA  
TTATGGATTAAGAAAAGAAATGGCTTCTAGGAATGCTTGGTGCAGAATCTTCTAACTGAATAATCAAGCT  
CGCTTTATATTAGAGAAAATAGATGGCAAAATAGTCATTGAAAAAAACCTAAGAAAAGAAATTAATTAAG  
TTCTGATTCAGAGAGGCTATGACTCCGACCCTGTGAAAGCCTGGAAAGAAGCTCAGCAGAAGGTCGCCAGA  
AGAAGAGGAAAAATGAAGAGAATGAAGAGAGCGAGAGTGAAGGCACGAGCCCTGCAGCGGAGTCTGGACCG  
ACCTTCAACTACCTTCTGATATGCCCTGTGGTATCTAACCAAGGAGAAGAAAGGACGAGCTGTGCAAGC  
AAAGGGACGAGAAGGAACAAGAGCTCAACACGTTAAAGAAAAAGACTCCATCGGATTTGTGGAAGGAAGA  
CCTGGCTGCTTTTGTGGAAGAACTGGAGTTGTTGAAGCCAAGGAAAAACAGGATGAACAAGTAGGACTT  
CCTGGAAGGGGGTGAAGCGAAGGGGAAGAAAGCGCAGATATCTGAAGTCTGCCTTCTCTGTGGGGA  
AAAGGGTCATCCCGCAGGTGACTATGGAGATGAGAGCTGAGGCAGAGAAGAAAAATCAGGAGGAAAAATTA  
GAGCGAGAATGTTGAGGGCACCCCTGCTGAGGATGGTCTGAGCCAGGACTCCGGCAGAGACTAGAGAAG  
AGGCAGAAGAGAGGCCAGGTACCAGGGCAAGAAGCAAACACTACATTGCCATTTAAGCCTATCAAAAAAG  
CCCAAAAGCAAAACCTTGGTCTGATTCTGAATCAGATATGAGCAGCAACGAAAGCAATTTTGTATGCC  
TCCACGAGAGAAAAGGCCAAGAATTGCTGCAACAAAAGCCAAATTCACGGCGGATTTAGACTCTGATGAC  
GATTTCTCAGGCTTGGATGAGAAGGATGAGGATGAAGATTTCTTCCCATTAGATGATACTCCACCTAAGA  
CCAAAAATGCCCCAAAAAATACTAAAAAGCACTGAAGCCACAGAAGAGCTCCACATCAGTTGATCTTGA  
AAGTGATGGGAAAGACAGTGTACCAGCTTCTCCAGGCGCTTCTGCTGCTGACGTCCCAGCTGAGACTGAA  
CCCTCAAAGCCGCTCTCCAAACAGACAGTGGGAGTGAAGAGGACAATAACCAAAGGTCAGTCTTTAACCT  
CCTACTGCTGGCACCAAAAAGAGAGCTGTACCAAAGGAGACCAAGTCAGATTCAGCCTTGAATGCTCATGT  
CTCCAAAAAGCCTGCTCCTGCCAAAGCCAAGAACAGTCGCAAGAGGATGCCATCTTCTTCTGACAGCTCG  
GACTCTGAGTTTGAAGAGCGATTTCTAAAGGTGCCACAAGCAAGAAACTCAAGGGAGAGGAGCGGATT  
TCCATGTGGACTTAGATGACACTGTGGCTCCTCGAGCAAAATCCGGACGAGCAAGGAAGCCGATTAAAGTA  
CCTGGAGGAGTCCGATGACGACCTCTTC

ACGCGTACGCGGCCGCTCGAGCAGAACTCATCTCAGAAGAGGATCTGGCAGCAATGATATCCTGGATT  
ACAAGGATGACGACGATAAGGTTTAA



**Plasmid Map:**


**ACCN:** NM\_022183

**ORF Size:** 4578 bp

**OTI Disclaimer:** The molecular sequence of this clone aligns with the gene accession number as a point of reference only. However, individual transcript sequences of the same gene can differ through naturally occurring variations (e.g. polymorphisms), each with its own valid existence. This clone is substantially in agreement with the reference, but a complete review of all prevailing variants is recommended prior to use. [More info](#)

**OTI Annotation:** This clone was engineered to express the complete ORF with an expression tag. Expression varies depending on the nature of the gene.

**Components:** The ORF clone is ion-exchange column purified and shipped in a 2D barcoded Matrix tube containing 10ug of transfection-ready, dried plasmid DNA (reconstitute with 100 ul of water).

**Reconstitution Method:**

1. Centrifuge at 5,000xg for 5min.
2. Carefully open the tube and add 100ul of sterile water to dissolve the DNA.
3. Close the tube and incubate for 10 minutes at room temperature.
4. Briefly vortex the tube and then do a quick spin (less than 5000xg) to concentrate the liquid at the bottom.
5. Store the suspended plasmid at -20°C. The DNA is stable for at least one year from date of shipping when stored at -20°C.

**RefSeq:** [NM\\_022183.2](#), [NP\\_071519.2](#)

**RefSeq Size:** 4987 bp

**RefSeq ORF:** 4581 bp

**Locus ID:** 360243

**UniProt ID:** [P41516](#)

**Cytogenetics:** 10q31

**MW:** 173.2 kDa

**Gene Summary:** DNA topoisomerase, a nuclear enzyme that can alter the topologic state of DNA during transcription [RGD, Feb 2006]