

## Product datasheet for **RR206295**

### Cdc7 (NM\_001108352) Rat Tagged ORF Clone

#### Product data:

Product Type:	Expression Plasmids
Product Name:	Cdc7 (NM_001108352) Rat Tagged ORF Clone
Tag:	Myc-DDK
Symbol:	Cdc7
Mammalian Cell Selection:	Neomycin
Vector:	pCMV6-Entry (PS100001)
E. coli Selection:	Kanamycin (25 ug/mL)



[View online »](#)

**ORF Nucleotide Sequence:**

>RR206295 representing NM\_001108352  
 Red=Cloning site Blue=ORF Green=Tags(s)

TTTTGTAATACGACTCACTATAGGGCGGCCGGAATTCGTCGACTGGATCCGGTACCGAGGAGATCTGCC  
 GCC**GCGATCGCC**

ATGGAGGAGCCAATGGCGTTTTCTCCCCTGCGTGGCTGTGACAGGTGTCCGGCTGATGACTCTTTAAAAA  
 AATATGAGCAGAGTGTTAACTTTCAGGTATTAAGAGAGATATTGAGGAGCTTTGCGAAGCCGTACCACA  
 GCTTGTCAAGTGTTCAAAATTAAGGACAAAATCGGAGAAGGCACCTTCAGCTCTGTTTATTTGGCCACA  
 GCGCAGCTGCAAGAAGGACGTGAAGAGAAGATTGCGCTGAAACACTTAATCCCACAAGCCATCCTGTGA  
 GGATTGCGGCCGAGCTTCAGTGTCTGACCGTCGCAGGGGGCAGGACAATGTCATGGGAGTGAAGTACTG  
 CTTCAGGAAGAACGACCATGTGGTGATTGCTATGCCCTACCTGGAACATGAGTCTTTTCTGGACATTTTG  
 AATTCTCTTTCTTTCAAGAAGTTCGAGAATATATGTTCAACCTTTTCGAGCTCTGAAGCGGATCACC  
 AGTTTGGCATTGTTACCGTGATGTGAAGCCAGTAACTTTTTATACAATAGACGCCTGAAAAAGTATGC  
 CTTGGTGGACTTCGGTTTGGCCCAAGGAACCCGTGACACAAAGATAGAGCTGCTCAAGTTTGTCCAGTCT  
 GAAGCTCAGCAGGAAGATTGTTCCAGAAACAAATGTCATGGAGTATTGGACACAAGGGCCCACTGAGTC  
 GCCCAGCACCTAAAAATGTGGATCAGCACATCACCAAAAAACTTCTGTCAAAAGATCCTATGCAACGC  
 ACAGATTCACATTAAGCAAGGAAAAGACGGAAAGGAGGGGTCTGTAGGCCTTTCTGTCCAGCGCTCTGTT  
 TTTGGAGAAAGAAATTTCAATATACACAGCTCCATTTACATGAGAGCCCTGCAGAGAACTCATCAAGC  
 AATCGAAGACTGTGGACATAATGTCAAGAAAGTAGCAACAAAAAAGATGGCCGTTTCTACAAAGGCTGT  
 GAATAGCTCGATGAGGGACTCTGCCAGGTCCTGCCAGCTGCCCTCACGTGCGACTGCTATGGAACAGAT  
 AGAGTGTGACGCTTTGCCTGTGAGGGCGCAGCAGGTTGCCCTAGGGCAGGCACACCAGGATTCAGAG  
 CGCCAGAGGTCCTGACAAAGTCTCTGACCAGACTACAGCGATTGACATGTGGTCTGCAGGTGTCATATT  
 CCTTTCCTTGCTCAGTGGGCGGTACCCGTTTTACAAGGCCAGCGATGACTTAAGTCTTTGGCCCAATC  
 ATGACAATTCGAGGATCCAGGAAAATATCCAGGCTGCTAAAGCTTTTGGCAATCAATTTTGTGTAGCA  
 AAGAAGTCCCAGCACAAAGACTTGAGGACGCTCTGTGAGAGACTACGGGGTCCGGACTCTGCCAATCCCAA  
 GTCTGCTGTTGATCCTCCAGGGAATACTGGCCACCACCCTGCTGCTTCGGAGAGCACTGACCATAAAGCG  
 CCCCATGCACCGGCTCTCCGGCACAGCACTCGGAGGATCCCTGTATAAAAGGGGCAGCGGCGGTGGTC  
 GGAGACATCCCAGAGATCGAAGTCCAACCCAGAGGGCTGGGACTCGGTGCTGATGACGCCTATGACCT  
 GCTCGATAAACTTCTGGACTTAAACCCAGCCTCCAGGATAACAGCAGAAGCGCCTTGGTCCATCCGTTT  
 TTTAAAGATGTGTGC

**ACGCGT**ACGCGGCCGCTCGAGCAGAAACTCATCTCAGAAGAGGATCTGGCAGCAAATGATATCCTGGATT  
 ACAAGGATGACGACGATAAGGTTTAA

**Protein Sequence:**

>RR206295 representing NM\_001108352  
 Red=Cloning site Green=Tags(s)

MEEPMAFSPLRGCDRCPADDSLKKYEQSVKLSGIKRDIEELCEAVPQLVSVFKIKDKIGEGTFSSVYLAT  
 AQLQEGREEKIALKHLIPTSHPVRIAAELQCLTVAGGQDNVMGVKYCFRKNHVVIAMPYLEHESFLDIL  
 NSLSFQEVREYMFNLFVALKRIHQFGIVHRDVKPSNFLYNRRLKKYALVDFGLAQGTRDKIELLKVFQS  
 EAQQEDCSRKCHGVIGHKGPLSRPAPKNVDQHITTKTSVKRSYANAQIHIKQKDGKEGSVGLSVQRSV  
 FGERNFNIHSSISHESPAEKLKQSKTVDIMSRKLATKKMAVSTKAVNSSMRDSARSCPAALTCDCYGTD  
 RVCSVCLSRQQVAPRAGTPGFRAPEVLTKCPDQTTAIDMWSAGVIFLSLLSGRYPFYKASDDL TALAQI  
 MTIRGSRETIQAAKAFGKSILCSKEVPAQDLRTLCELRGPD SANPKSAVDPPGNTGHPAAESESTDHKA  
 PHAPASPAQHSEDSLYKRGSGGRRRHRDRDANPEGWDSVPDDAYDLLDKLLDLNPAASRTAEAAALVHPF  
 FKDVC

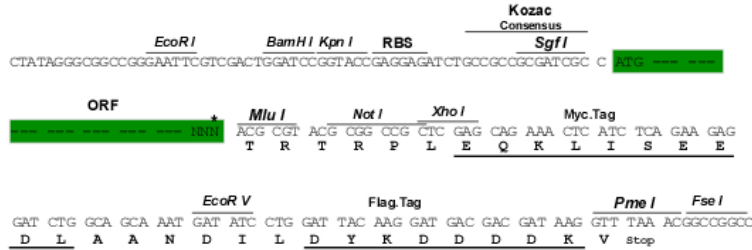
**TR**TRPLEQKLISEEDLAANDILDYKDDDDKV

**Restriction Sites:**

Sgfl-MluI

**Cloning Scheme:**

Cloning sites used for ORF Shuttling:



\* The last codon before the Stop codon of the ORF

**ACCN:** NM\_001108352

**ORF Size:** 1695 bp

**OTI Disclaimer:** The molecular sequence of this clone aligns with the gene accession number as a point of reference only. However, individual transcript sequences of the same gene can differ through naturally occurring variations (e.g. polymorphisms), each with its own valid existence. This clone is substantially in agreement with the reference, but a complete review of all prevailing variants is recommended prior to use. [More info](#)

**OTI Annotation:** This clone was engineered to express the complete ORF with an expression tag. Expression varies depending on the nature of the gene.

**Components:** The ORF clone is ion-exchange column purified and shipped in a 2D barcoded Matrix tube containing 10ug of transfection-ready, dried plasmid DNA (reconstitute with 100 ul of water).

- Reconstitution Method:**
1. Centrifuge at 5,000xg for 5min.
  2. Carefully open the tube and add 100ul of sterile water to dissolve the DNA.
  3. Close the tube and incubate for 10 minutes at room temperature.
  4. Briefly vortex the tube and then do a quick spin (less than 5000xg) to concentrate the liquid at the bottom.
  5. Store the suspended plasmid at -20°C. The DNA is stable for at least one year from date of shipping when stored at -20°C.

**RefSeq:** NM\_001108352.1, NP\_001101822.1
**RefSeq Size:** 2917 bp

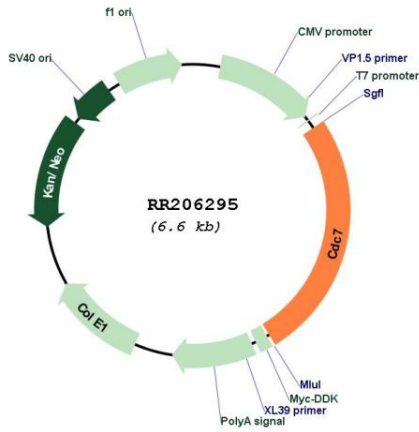
**RefSeq ORF:** 1698 bp

**Locus ID:** 360908

**Cytogenetics:** 14p22

**MW:** 62.4 kDa

Product images:



Circular map for RR206295