

Product datasheet for **RR203261**

Lxn (NM_031655) Rat Tagged ORF Clone

Product data:

Product Type: Expression Plasmids
Product Name: Lxn (NM_031655) Rat Tagged ORF Clone
Tag: Myc-DDK
Symbol: Lxn
Synonyms: MGC93322
Vector: pCMV6-Entry (PS100001)
E. coli Selection: Kanamycin (25 ug/mL)
Cell Selection: Neomycin
ORF Nucleotide Sequence: >RR203261 representing NM_031655
Red=Cloning site Blue=ORF Green=Tags(s)

TTTTGTAATACGACTCACTATAGGGCGGCCGGAATTCGTCGACTGGATCCGGTACCGAGGAGATCTGCC
GCC**CGATCGCC**

ATGGAAGAAATCCCACCCACCCACTACGCTGCGTCCAGGGCTGCCTCGGTGGCAGAGAACTGTATAAATT
ATCAGCAAGGGACCCCAACAAGGTATTCAAGGTGCAGACGGTCCAGCAGCAAGCAAGGAGGATATCCC
AGGAAGAGGCCACAAGTACCATCTGAAGTTTTCTGTGGAAGAAATATCCAAAAACAAGTTACAGTGAGC
TGCACGGCTGAAGTTCTTTACCCTCGAATGGGACAAGGCTCTGCACCGGAAGTCAACTTCACATTTGAAG
GAGAAATCGGCAAGAACCAGATGAGGAAGACAACACGTTTTATCAAAGACTCATGTCCATGAAGGAACC
ACTACAAGCACAAAATATTCCAGACAATTTTGGAAATGTGTCTCCACAAATGAAGCCGGTCCACCACTTA
GCCTGGGTGCGCTGTGGTTATGTAATGTGGCAGAACTCGACTGAAGACACATGGTATAAAATGGCAAAGA
TTCAAACGGTCAAGCAAGTGCAAAGAACGATGACTTCATTGAGTTAGACTACACCGTCTACTCCACGA
CGTTGCATCGCAGGAGATTATCCCCTGGCAAATGCAAGTTCTGTGGCACCACAATACGGCACAAAAGTA
AAGCACAAACAGCCGCCTCCCAAAGGAAGCACCAGCAGAG

ACGCGTACGCGGCCGCTCGAGCAGAAACTCATCTCAGAAGAGGATCTGGCAGCAAATGATATCCTGGATT
ACAAGGATGACGACGATAAGGTTTAA



Protein Sequence: >RR203261 representing NM_031655
 Red=Cloning site Green=Tags(s)

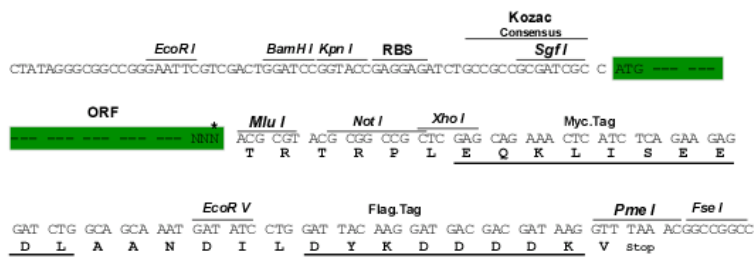
MEEIPPTHYAASRAASVAENCINYQQGTPNKVFKVQTVQQASKEDIPGRGHKYHLKFSVEEIIQKQVTVS
 CTAEVL YPRMGQGSAPENVNFTFEGEIGKNPDEEDNTFYQRLMSMKEPLQAQNI PDNFGNVSPQMKPVHHL
 AWWACGYVMWQNSTEDTWYKMAKIQTVKQVQRNDDFIELDYTVLLHVDVASQEIIPWQMQLVWHPQYGTKV
 KHNSRLPKAEPAE

TRTRPLEQKLISEEDLAANDILDYKDDDDKV

Restriction Sites: Sgfl-MluI

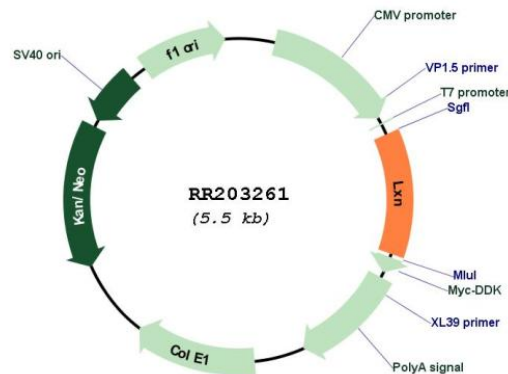
Cloning Scheme:

Cloning sites used for ORF Shuttling:



* The last codon before the Stop codon of the ORF

Plasmid Map:



ACCN: NM_031655

ORF Size: 669 bp

OTI Disclaimer:	The molecular sequence of this clone aligns with the gene accession number as a point of reference only. However, individual transcript sequences of the same gene can differ through naturally occurring variations (e.g. polymorphisms), each with its own valid existence. This clone is substantially in agreement with the reference, but a complete review of all prevailing variants is recommended prior to use. More info
OTI Annotation:	This clone was engineered to express the complete ORF with an expression tag. Expression varies depending on the nature of the gene.
Components:	The ORF clone is ion-exchange column purified and shipped in a 2D barcoded Matrix tube containing 10ug of transfection-ready, dried plasmid DNA (reconstitute with 100 ul of water).
Reconstitution Method:	<ol style="list-style-type: none">1. Centrifuge at 5,000xg for 5min.2. Carefully open the tube and add 100ul of sterile water to dissolve the DNA.3. Close the tube and incubate for 10 minutes at room temperature.4. Briefly vortex the tube and then do a quick spin (less than 5000xg) to concentrate the liquid at the bottom.5. Store the suspended plasmid at -20°C. The DNA is stable for at least one year from date of shipping when stored at -20°C.
RefSeq:	NM_031655.1 , NP_113843.1
RefSeq Size:	1087 bp
RefSeq ORF:	672 bp
Locus ID:	59073
UniProt ID:	Q64361
Cytogenetics:	2q32
MW:	25.6 kDa
Gene Summary:	inhibits the proteolytic activity of carboxypeptidase A; may mediate prevention of cytosolic protein degradation [RGD, Feb 2006]