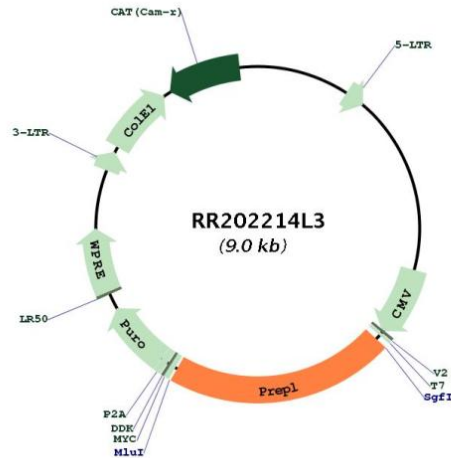


Plasmid Map:



ACCN: NM_001010951

ORF Size: 1914 bp

OTI Disclaimer: The molecular sequence of this clone aligns with the gene accession number as a point of reference only. However, individual transcript sequences of the same gene can differ through naturally occurring variations (e.g. polymorphisms), each with its own valid existence. This clone is substantially in agreement with the reference, but a complete review of all prevailing variants is recommended prior to use. [More info](#)

OTI Annotation: This clone was engineered to express the complete ORF with an expression tag. Expression varies depending on the nature of the gene.

Components: The ORF clone is ion-exchange column purified and shipped in a 2D barcoded Matrix tube containing 10ug of transfection-ready, dried plasmid DNA (reconstitute with 100 ul of water).

Reconstitution Method:

1. Centrifuge at 5,000xg for 5min.
2. Carefully open the tube and add 100ul of sterile water to dissolve the DNA.
3. Close the tube and incubate for 10 minutes at room temperature.
4. Briefly vortex the tube and then do a quick spin (less than 5000xg) to concentrate the liquid at the bottom.
5. Store the suspended plasmid at -20°C. The DNA is stable for at least one year from date of shipping when stored at -20°C.

RefSeq: [NM_001010951.1](#), [NP_001010951.1](#)

RefSeq Size: 2219 bp

RefSeq ORF: 1917 bp

Locus ID: 298771

UniProt ID: [Q5HZA6](#)

Cytogenetics: 6q12

Gene Summary: Probable serine peptidase whose precise substrate specificity remains unclear. Does not cleave peptides after a arginine or lysine residue. May play a role in the regulation of synaptic vesicle exocytosis.[UniProtKB/Swiss-Prot Function]