

Product datasheet for **RR201760**

Sdc2 (NM_013082) Rat Tagged ORF Clone

Product data:

Product Type: Expression Plasmids
 Product Name: Sdc2 (NM_013082) Rat Tagged ORF Clone
 Tag: Myc-DDK
 Symbol: Sdc2
 Synonyms: HSPG
 Vector: pCMV6-Entry (PS100001)
 E. coli Selection: Kanamycin (25 ug/mL)
 Cell Selection: Neomycin
 ORF Nucleotide Sequence: >RR201760 representing NM_013082
 Red=Cloning site Blue=ORF Green=Tags(s)

TTTTGTAATACGACTCACTATAGGGCGGCCGGAATTCGTCGACTGGATCCGGTACCGAGGAGATCTGCC
 GCC**CGATCGCC**

ATGCGGGTACGAGCCACGTCCCCGGGAATATGCAGCGTGCCTGGATCCTGCTCACCTTGGGCTTGATGG
 CCTGTGTGTCGGCAGAGACGAGAGCAGAGCTGACATCTGATAAGGACATGTACCTTGACAGCAGCTCCAT
 TGAGGAAGCTTCAGGATTATATCTATTGATGATGATGACTATTCTTCTGCCTCTGGCTCAGGAGCTTAT
 GAAGACAAAGGGAGTCCAGATCTGACAACATCCCAACTGATTCCAAGGATCTCCCTCACTAGTGCTGCTC
 CCGAAGTGAAAACCATGACGTTGAAGACACAAAGCATCACCCCACTCAGACCGAGTCAACCGAAGAAAC
 TGACAAGAAGGAGTTTGAATCTCTGAGGCAGAAGAAAAGCAGGACCCTGCTGTAAAAAGCACAGACGTG
 TACACCGAGAAACATTCAGACAACTGTTCAGCGGACGGAAGTTCTAGCAGCTGTATTGCTGGCGGTG
 TGATTGGCTTTCTTTGCCATTTCTCATCTGTTGTTGGTGTACCGCATGCGGAAGAAAGACGAAGG
 AAGCTACGACCTTGAGAACGCAAACCGTCCAGCGCAGCTTACCAGAAGGCACCCCACTAAGGAGTTTTAT
 GCA

ACGCGTACGCGGCCGCTCGAGCAGAAACTCATCTCAGAAGAGGATCTGGCAGCAAATGATATCCTGGATT
 ACAAGGATGACGACGATAAGGTTTAA



[View online »](#)

Protein Sequence: >RR201760 representing NM_013082
 Red=Cloning site Green=Tags(s)

MRVRATSPGNMQRAWILLTLGLMACVSAETRAELTSDKMYLDSSSIEEASGLYPIDDDDYSSASGSGAY
 EDKGSPDLTTSQLIPRISLTSAAPEVETMLKTQSIPTQTESPEETDKKEFEISEAEKQDPAVKSTDV
 YTEKHSNLFKRTEVLAAVIAGGVIGFLFAIFLILLVYMRMKKDEGSYDLGERKPSSAAAYQKAPTKEYF
 A

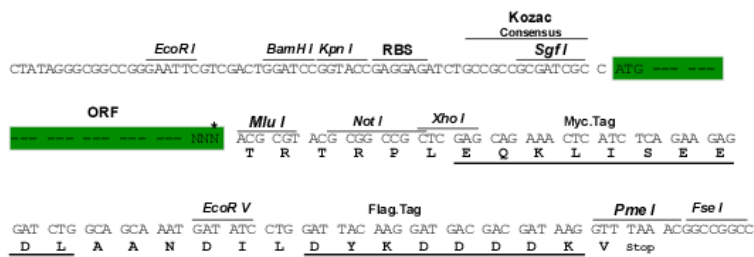
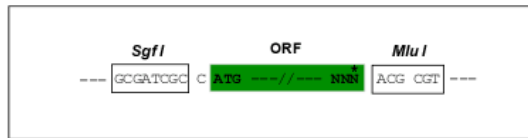
TRTRPLEQKLISEEDLAANDILDYKDDDDKV

Restriction Sites:

Sgfl-MluI

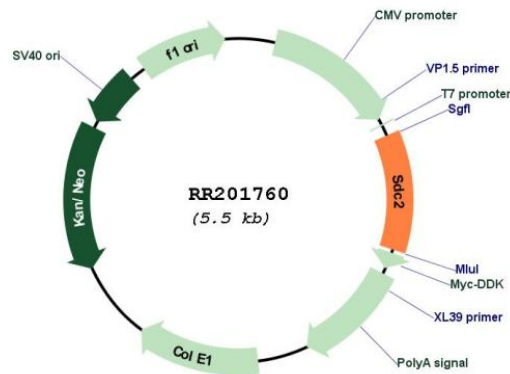
Cloning Scheme:

Cloning sites used for ORF Shuttling:



* The last codon before the Stop codon of the ORF

Plasmid Map:



ACCN: NM_013082

ORF Size: 633 bp

OTI Disclaimer:	The molecular sequence of this clone aligns with the gene accession number as a point of reference only. However, individual transcript sequences of the same gene can differ through naturally occurring variations (e.g. polymorphisms), each with its own valid existence. This clone is substantially in agreement with the reference, but a complete review of all prevailing variants is recommended prior to use. More info
OTI Annotation:	This clone was engineered to express the complete ORF with an expression tag. Expression varies depending on the nature of the gene.
Components:	The ORF clone is ion-exchange column purified and shipped in a 2D barcoded Matrix tube containing 10ug of transfection-ready, dried plasmid DNA (reconstitute with 100 ul of water).
Reconstitution Method:	<ol style="list-style-type: none">1. Centrifuge at 5,000xg for 5min.2. Carefully open the tube and add 100ul of sterile water to dissolve the DNA.3. Close the tube and incubate for 10 minutes at room temperature.4. Briefly vortex the tube and then do a quick spin (less than 5000xg) to concentrate the liquid at the bottom.5. Store the suspended plasmid at -20°C. The DNA is stable for at least one year from date of shipping when stored at -20°C.
RefSeq:	NM_013082.3 , NP_037214.1
RefSeq Size:	2153 bp
RefSeq ORF:	636 bp
Locus ID:	25615
UniProt ID:	P34900
Cytogenetics:	7q22
MW:	23.2 kDa
Gene Summary:	heparan sulfate proteoglycan core protein; may play a role in cell-cell interactions [RGD, Feb 2006]