

Product datasheet for **RR200816**

Cd47 (NM_019195) Rat Tagged ORF Clone

Product data:

Product Type:	Expression Plasmids
Product Name:	Cd47 (NM_019195) Rat Tagged ORF Clone
Tag:	Myc-DDK
Symbol:	Cd47
Synonyms:	Itgp
Mammalian Cell Selection:	Neomycin
Vector:	pCMV6-Entry (PS100001)
E. coli Selection:	Kanamycin (25 ug/mL)
ORF Nucleotide Sequence:	>RR200816 representing NM_019195 Red=Cloning site Blue=ORF Green=Tags(s)

TTTTGTAATACGACTCACTATAGGGCGGCCGGAATTCGTCGACTGGATCCGGTACCGAGGAGATCTGCC
GCC**CGATCGCC**

ATGTGGCCCTTGGCGGGCGCTGTTGCTGGGCTCCTGCTGCTGCGGTTTCAGCTCAACTCCTGCTTAGTA
AAGTCAAATCTGTAGAGTTCACGTCATGCAATGACTGTGGTCATCCCTTGCAAAGTCCTTAATGTGGA
AGCCAAAGCACCGATGAAATGTTTGTGAAGTGAAGTTGAACAAATCGTATATTTTCATCTATGATGGA
AATAAAAATAGCACTACTAGAGAACAAACTTTACCAGTGCAAAAATCTCGGTCTCAGACTTGCTCAAAG
GCATTGCCTCTTTGACAATGGATACCCATGAGGCTGTGGTGGGAAACTACACCTGTGAAGTACTGAGCT
TTCCAGAGAAGGCAAAACAGTTATAGAGCTGAAAACCGCCAGTTTCGTGGTTTTCTACAAATGAAAAG
ATCCTCATTGTTATTTCCCAATTTGGCTATACTCCTGTTCTGGGAAAAGTTTGGTATATTAACACTCA
AATACAAGTCCAGCCATACGAATAAGAGAATCATTCTGCTGCTGGTTGCCGGGCTGGCGCTCACACTCAT
CGTGGTTGTTGGCGCCATCCTTTTCATCCCGGGAGAGAAGCCCGTGAAGAACGCTTCTGGTCTTGGCCTC
ATTGTAATCTCCACAGGAATATTAATACTGCTTCAGTACAATGTGTTTATGACAGCTTTTGGAAATGACCT
CTTTCACCATTGCCATATTGATCACTCAAGTGTGGGCTATGTCTTGTGTGGTGGGATGTGTCTCTG
CATCATGGCTTGTGAACCAAGTGCACGGCCCCCTTTGATTTTCAGGTTTGGGAATCATAGCTCTAGCAGAA
TTACTTGGACTAGTTTATATGAAGTTTGTGCTTCCAACCAAGCGGACTATACAACCTCCTAGGAATAAC

ACGCGTACGCGGGCGCTCGAGCAGAAACTCATCTCAGAAGAGGATCTGGCAGCAAATGATATCCTGGATT
ACAAGGATGACGACGATAAGGTTTAA



[View online »](#)

Protein Sequence: >RR200816 representing NM_019195
Red=Cloning site Green=Tags(s)

MWPLAAALLLGSCCCGSAQLLLSKVKSVEFTSCNDTVVIPCKVLNVEAQSTDEMFKWKLNKSIFIIDG
 NKNSTTREQNFTSAKISVSDLLKGIASL TMDTHEAVVGNVYCEVTELSREGKTVIELKNRPVSWFSTNEK
 ILIVIFPILAILLFWGKFGILT LKYKSSHTNKRILLVAGLAL TLIVVVGAILFIPGEKPVKNASGLGL
 IVISTGILILLQYNVFMATFGMTSFTIAILITQVLGYVLAVVGMCLCIMACEPVHGPLLISGLGIIALAE
 LLGLVYMKFVASNQRTIQPRNN

TRTRPLEQKLISEEDLAANDILDYKDDDDKV

Chromatograms: https://cdn.origene.com/chromatograms/ja2070_b03.zip

Restriction Sites: SgfI-MluI

Cloning Scheme:



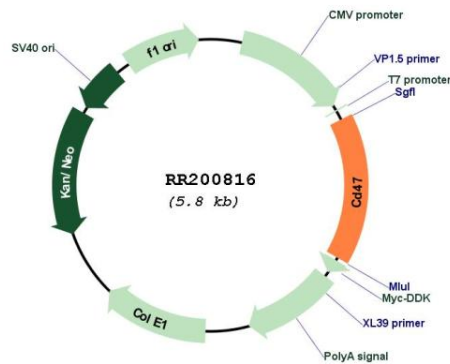
ACCN: NM_019195

ORF Size: 909 bp

OTI Disclaimer: Due to the inherent nature of this plasmid, standard methods to replicate additional amounts of DNA in E. coli are highly likely to result in mutations and/or rearrangements. Therefore, OriGene does not guarantee the capability to replicate this plasmid DNA. Additional amounts of DNA can be purchased from OriGene with batch-specific, full-sequence verification at a reduced cost. Please contact our customer care team at custsupport@origene.com or by calling 301.340.3188 option 3 for pricing and delivery.

The molecular sequence of this clone aligns with the gene accession number as a point of reference only. However, individual transcript sequences of the same gene can differ through naturally occurring variations (e.g. polymorphisms), each with its own valid existence. This clone is substantially in agreement with the reference, but a complete review of all prevailing variants is recommended prior to use. [More info](#)

OTI Annotation:	This clone was engineered to express the complete ORF with an expression tag. Expression varies depending on the nature of the gene.
Components:	The ORF clone is ion-exchange column purified and shipped in a 2D barcoded Matrix tube containing 10ug of transfection-ready, dried plasmid DNA (reconstitute with 100 ul of water).
Reconstitution Method:	<ol style="list-style-type: none"> 1. Centrifuge at 5,000xg for 5min. 2. Carefully open the tube and add 100ul of sterile water to dissolve the DNA. 3. Close the tube and incubate for 10 minutes at room temperature. 4. Briefly vortex the tube and then do a quick spin (less than 5000xg) to concentrate the liquid at the bottom. 5. Store the suspended plasmid at -20°C. The DNA is stable for at least one year from date of shipping when stored at -20°C.
RefSeq:	<u>NM_019195.2</u> , <u>NP_062068.1</u>
RefSeq Size:	1952 bp
RefSeq ORF:	912 bp
Locus ID:	29364
UniProt ID:	<u>P97829</u>
Cytogenetics:	11q21
MW:	33.4 kDa
Gene Summary:	protein that may be involved in regulating renal cell growth; overexpression is associated with Fe-NTA-induced renal damage and tumor progression and metastasis [RGD, Feb 2006]

Product images:


Circular map for RR200816