

Product datasheet for **RG240200**

TJP1 (NM_001301026) Human Tagged ORF Clone

Product data:

Product Type:	Expression Plasmids
Product Name:	TJP1 (NM_001301026) Human Tagged ORF Clone
Tag:	TurboGFP
Symbol:	TJP1
Synonyms:	ZO-1
Mammalian Cell Selection:	Neomycin
Vector:	pCMV6-AC-GFP (PS100010)
E. coli Selection:	Ampicillin (100 ug/mL)
ORF Nucleotide Sequence:	>RG240200 representing NM_001301026. Blue=ORF Red=Cloning site Green=Tag(s)

```
GCTCGTTTGTAGTGAACCGTCAGAATTTTGTAAATACGACTACTATAGGGCGGCCGGGAATTCGTGACTG
GATCCGGTACCGAGGAGATCTGCCGCCGCGATCGCC
ATGGAGAGAAATACGTTTTCAATGGATTGCCACAGTAAGAGCACAGCAATGGAGGAAACAGCTATATGG
GAACAACATACAGTGACGCTTCACAGGGCTCCTGGATTGGATTGGAATTGCAATATCTGGTGGACGA
GATAATCCTCATTTTCAGAGTGGGAAACGTCAATAGTGATTTTCAGATGTGCTGAAAGGAGGACCAGCT
GAAGGACAGCTACAGGAAAATGACCGAGTTGCAATGGTTAACGGAGTTTCAATGGATAATGTTGAACAT
GCTTTTGTCTGTTAGCAACTAAGGAAAAGTGGGAAAAATGCAAAAATTACAATTAGAAGGAAGAAGAAA
GTTCAAATACCAGTAAGTCGTCCTGATCCTGAACCAAGTATCTGATAATGAAGAAGATAGTTATGATGAG
GAAATACATGATCCAAGAAGTGGCCGGAGTGGTGTGGTTAACAGAAGGAGTGAGAAGATTTGGCCGAGG
GATAGAAGTGCAAGTAGAGAGAGGAGCTTGTCCCGCGGTGACACAGGCGGTGAGTGGCTTCCAGCCAG
CCTGCTAAACCTACTAAAGTCACACTGGTAAAATCCCGGAAAAATGAAGAATATGGTCTTCGATTGGCA
AGCCATATATTTGTTAAGGAAAATTTACAAGATAGTTTGGCAGCAAGAGATGGCAATATTTCAAGAAGGT
GATGTTGTATTGAAGATAAATGGTACTGTGACAGAAAATATGTCATTGACAGATGCAAAGACATTGATA
GAAAGGTCTAAAGGCAAATTTAAAATGGTAGTTCAAAGAGATGAACGGGCTACGCTATTGAATGTCCCT
GATCTTTCTGACAGCATCCACTCTGCTAATGCCTCTGAGAGAGACGACATTTAGAAAATTCAGTCACTG
GCATCAGATCATTCTGGTCGATCACACGATAGGCCTCCCGCCGACGCCAAGCAATGGCAGTCTCCGAGTAGA
CGGTGAGAGCCTTCTGATCATTCCAGGCACTCGCCGAGCAGCAAGCAATGGCAGTCTCCGAGTAGA
GATGAAGAGAGAATTTCTAAACCTGGGGCTGTCTCAACTCCTGTAAGCATGCTGATGATCACACACCT
AAAACAGTGGAAGAAGTTACAGTTGAAAGAAAATGAGAAACAAACACCTTCTCTCCAGAACCAAAGCCT
GTGATGCCCCAAGTTGGGCAACCAGATGTGGATTTACCTGTGAGTCCATCTGATGGTGTCTACCTAAT
TCAACTCATGAAGATGGGATTCTCGGCCAGCATGAAATTTGGTAAAATTCAGAAAAGGAGATAGTGTG
GGTTTGGCGCTGGCTGGTGGAAATGATGTTGGAATATTTGTAGCTGGCGTTCTAGAAGATAGCCCTGCA
GCCAAGGAAGGCTTAGAGGAAGGTGATCAAATTTCTCAGGGTAAACAACGTAGATTTTACAAATATCATA
AGAGAAGAAGCCGTCCTTTTCTGCTTGACCTCCCTAAAGGAGAAGAAGTGACCATATTGGCTCAGAAG
```



[View online »](#)

AAGAAGGATGTTTATCGTCGCATTGTAGAATCAGATGTAGGAGATTCTTTCTATATTAGAACCCATTTT
GAATATGAAAAGGAATCTCCCTATGGACTTAGTTTTAACAAAGGAGAGGTGTTCCGTGTTGTGGATACC
TTGTACAATGGAAAACCTGGGCTCTTGGCTTGTATTCCAATTGGTAAAAATCATAAGGAGGTAGAACGA
GGCATCATCCCTAATAAGAACAGAGCTGAGCAGCTAGCCAGTGTACAGTATACACTTCCAAAAACAGCA
GGCGGAGACCGTCTGACTTCTGGAGATTTCAGAGGTCTTCGCAGCTCCAAGAGAAATCTTCGAAAAAGC
AGAGAGGATTTGTCGGCTCAGCCTGTTCAAACAAAGTTTCCAGCTTATGAAAGAGTGGTTCTTCGAGAA
GCTGGATTTCTGAGGCCGTAAACCATTTTTGGACCAATAGCTGATGTTGCCAGAGAAAAGCTGGCAAGA
GAAGAACCAGATATTTATCAAATTGCAAAGAGTGAACCACGAGACGCTGGAACCTGACCAACGTAGCTCT
GGCATTATTCGCCTGCATACAATAAAGCAAATCATAGATCAAGACAAACATGCTTTATTAGATGTAACA
CCAAATGCAGTTGATCGTCTTAAGTATGCCAGTGGTATCCAATTGTTGATTTCTTAACCTGATTCT
AAGCAAGGAGTAAAAACAATGAGAATGAGGTTATGTCCAGAATCTCGAAAAAGTCCAGGAAGTTATAC
GAGCGATCTCATAAACTTCGTAATAAATCACCATCTTTTTACAACATAAATTAATTAATCAATG
AATGATGGTTGGTATGGTGCCTGAAAGAAGCAATTCAACAACAGCAAAACCAGCTGGTATGGGTTTCC
GAGGAAAAGCGGATGGTGTACAAGTGTGACCTTGATTTGCATGATGATCGTCTGTCTACCTGTCA
GCTCCAGGTAGTGAATACTCAATGTATAGCACGGACAGTACACACTTCTGACTATGAAGACACAGAC
ACAGAAGGCGGGCTACTGATCAAGAACTAGATGAAACTCTAATGATGAGGTTGGGACTCCACCG
GAGTCTGCCATTACCGTCTCTGAGCCTGTAAGAGAGGACTCCTCTGGAATGCATCATGAAAACCAA
ACATATCCTCCTTACTCACCAAGCGCAGCCACAACCAATTCATAGAATAGACTCCCCTGGATTTAAG
CCAGCCTCTCAACAGGTGTATAGAAAGGATCCATATCCCGAGGAAATGATGAGGCAGAACCATGTTTTG
AAACAGCCAGCCGTTAGTCACCCAGGGCACAGGCCAGCAAAAGAGCCTAATCTGACCTATGAACCCCAA
CTCCCATACGTAGAGAAACAAGCCAGCAGAGACCTCGAGCAGCCACATACAGATACGAGTCTCAAGC
TATACGGACCAGTTTTCTCGAACTATGAACATCGTCTGCGATACGAAGATCGCGTCCCCATGTATGAA
GAACAGTGGTCATATTATGATGACAACACGCCCTACCCATCTCGGCCACCTTTTGATAACTCAGCACTCT
CAAGACCTTGACTCCAGACAGCATCCCGAAGAGTCCCTCAGAACGAGGGTACTTTCCACGTTTTGAAGAG
CCAGCCCCCTGTCTTACGACAGCAGACCAGTTCGAACAGGCACCTAGAGCATCCGCCCTGCGGCAC
GAAGAGCAGCCAGCTCCTGGGTATGACACACATGGTAGACTCAGACCCGGAAGCCAGCCCCACCCTTCA
GCAGGGCCCAAGCCTGCAGAGTCCAAGCAGTATTTTGGCAATATTCACGCAGTACGAGCAAGTACCA
CCCCAAGGATTTACCTCTAGAGCAGGTCAATTTGAGCCTCTCCATGGTGTGAGCTGTCCCTCCGCTG
ATACCTTCATCTCAGCATAAGCCAGAAGCTCTGCCTTCAAACACCAAAACCACTGCCTCCACCCCAA
CAAACCGAAGAAGAGGAAGATCCAGCAATGAAGCCACAGTCTGTACTCACCAGAGTTAAGATGTTTGAA
AACAAAAGATCTGCATCCTTAGAGACCAAGAAGGATGTAATGACTGCGAGTTTTAAGCTCCAGAA
GTAGCATCTAAACCTTCAAGTGTCCCATCATTGGTCCCAAAACCACTTCTCAGAATCAATTCAGTGAA
CATGACAAAACCTGTACAGGATCCCAGAACCTCAAAAACCTCAACTGAAGCCACCTGAAGATATTGTT
CGGTCCAATCATTATGACCCTGAAGAAGATGAAGAATATTATCGAAAACAGCTGTACATACTTTGACCGA
AGAAGTTTTGAGAATAAGCCTCTGCACACATTGCCGCCAGCCATCTCTCCGAGCCTGCAAAGCCAGCG
CATTCTCAGAATCAATCAATTTTTCTAGTTATTTCTCAAAGGGAAAGCCTCCTGAAGCTGATGGTGTG
GATAGATCATTGGCGAGAAACGCTATGAACCCATCCAGGCCACTCCCCCTCCTCCTCATTGCCCTCG
CAGTATGCCAGCCATCTCAGCCTGTACCAGCGCTCTCTCCACATACATTCTAAGGGAGCACATGGT
GAAGTAATTCAGTGTCTATTGGATTTTCAAGATTCCTTAGTGTCAAACCAGACCCACCTCCATCTCAG
AATAAGCCAGCAACTTTTACAGCCACCAACCCGAGAAGATACTGCTCAGGCAGCTTTCTATCCCAGAAA
AGTTTTCCAGATAAAGCCCCAGTTAATGGAACGAAACAGACTCAGAAAACAGTCACTCCAGCATACAAT
CGATTCACACCAAAACCATATACAAGTTCTGCCGACCATTTGAACGCAAGTTTGAAAGTCTAAATTC
AATCACAATCTTCTGCCAAGTGAACCTGCACATAAACCTGACTTGTCTTCAAAAACCTCCACTTCTCCA
AAAACCTTTGTGAAATCGCACAGTTTGGCACAGCCTCCTGAGTTTGACAGTGGAGTTGAAACTTTCTCT
ATCCATGCAGAGAAGCCTAAATATCAAATAAATAATATCAGCACAGTGCCTAAAGCTATTCTGTGAGT
CCTTCAGCTGTGGAAGAGGATGAAGATGAAGATGGTCACTGTGGTGGCCACAGCCGAGGCATATTT
AACAGCAATGGGGCGTGTGAGTTCCATAGAAACTGGTGTAGTATAATTATCCCTCAAGGAGCCATT
CCCGAAGGAGTTGAGCAGGAAATCTATTTCAAGGTCTGCCGGGACAACAGCATCCTTCCACCTTTAGAT
AAAGAGAAAGGTGAAACACTGCTGAGTCTTTGGTGTGTTGGTCCCATGGCCTCAAGTTCTGAAAG
CCTGTGGAGCTGCGCTTACCACACTGTGCGTCCATGACTCCTGACGGTGGTCTTTTGTCTAAAATCA
TCCGACTCCTCGTCCGGTGTATCTAAAACCTGGCAAAAACAAGTGTCTTCCCGGAGATCCAAATTATCTC
GTTGGAGCAAACCTGTGTTTCTGTCTTATTGACCACCTT

ACGCGTACGCGGCCGCTCGAG - GFP Tag - GTTTAAAC

Protein Sequence:

>Peptide sequence encoded by RG240200
 Blue=ORF Red=Cloning site Green=Tag(s)

MERNTFSMDCHSKSTAMEETAIWEQHTVTLHRAPGFGFGIAISGGRDNPHFQSGETSIVISDVLKGGPA
 EGQLQENDRVAMVNGVSMNDNEHAFVAVQLRKSGKNAKITIRKKKVQIPVSRPDPEVSDNEEDSYDE
 EIHDPGRSGVNVRRSEKIWPRDRSASRERSLSRSDRRSVASSQPAKPTKVTLVKSRKNEEYGLRLA
 SHIFVKEISQDLSLAARDGNIQEGDVVLKINGTVTENMSL TDAKTLIERSKGKLMVVQRDERATLLNVP
 DLSDSIHSANASERDDISEIQSLASDHSGRSHDRPPRRSRSPDQRSEPSDHSRHPQQPSNGSLRSR
 DEERISKPGAVSTPVKHADDHTPKTVEEVTVERNEKQTPSLPEPKPVYAQVGPVDLVPVSPDGLPN
 STHEDGILRPSMKLVKFRKGDSVGLRLAGGNDVGFVAVGLEDSPAAKEGLEEGDQILRVNNDVTNII
 REEAVLFLLDLPGKEEVTILAQKKKDVYRRIVESDVGDSFYIRTHFEYEKESPYGLSFNKGEVFRVVD
 L YNGKLGSLAIRIGKNHKEVERGIIPKNRAEQLASVQYTLPKTAGGDRADFWRFRGLRSSKRNLRKS
 REDLSAQPVQTKFPAYERVVLREAGFLRPVTIFGPIADVAREKLAREEPDIYQIAKSEPRDAGTDQRSS
 GIIRLHTIKQIIDQDKHALLDVTNPNAVDRNLNYAQWYPIVVFLNPDQKQGVKTRMRMLCPESRKSARKLY
 ERSKHLRKNHHLFTTTINLNSMNDGWYGALKEAIQQQQNQLVWVSEKADGATSDDLDLHDDRSLYS
 APGSEYSMYSTDSRHTSDYEDTDEGGAYTDQELDETLNDEVGTPPESAITRSSEPVREDSGMMHENQ
 TYPPYSPQAQPPIHRIDSPGFKPASQQVYRKDPYPEEMMRQNHVLPKQAVSHPGHRPKENLTYEPQ
 LPYVEKQASRDLEQPTYRYESSYTDQFSRNYEHLRYEDRVPMYEEQWSYDDKQPYPSRPPFDNQHS
 QDLDSRQHPEESSERGFPRFEAPLSYDSRPRYEQAPRASALRHEEQPAPGYDTHGRLRPEAQPHPS
 AGPKPAESKQYFEQYSRSYEQVPPQGFSTRAGHFELHGAAVPLIPSSQHKPEALPSNTKPLPPPPT
 QTEEEEDPAMKQSVLTRVKMFENKRSASLETKKDVNDTGSFKPPEVASKPSGAPIIGPKPTSQNFSE
 HDKTLYRIPEPQKQLKPPEDIVRSNHYDPEEDEEYRQQLSYFDRRSFENKPPAIIAASHLSEPAKPA
 HSQNQSNFSSYSKGPPEADGVDRSFGEKRYEPIQATPPPPPLPSQYAPSQVTSASLHIHSGAHG
 EGNSVSLDFQNSLVSKPDPPPSQNKPAFRPPNREDAQAAYPQKSFDPKAPVNGTEQTQKTVTPAYN
 RFTPKPYTSSARPFERKFESPKFNHLLPSETAHKPDLSKPTPTSPKTLVKSHSLAQPEFDSGVETFS
 IHAEPKYQINNI STVPKAI PVSPSAVEDEDEDEGHTVVATARGIFNSNGGVLSSIETGVSIIIPQGA
 IPEGVEQEIYFKVCRDNSILPPLDKEKGETLLSPLVMCGPHGLKFLKPVELRLPHCASMTPDGWSFALKS
 SDSSSGDPKTWQNKCLPGDPNYLVGANCVSVLIDHF

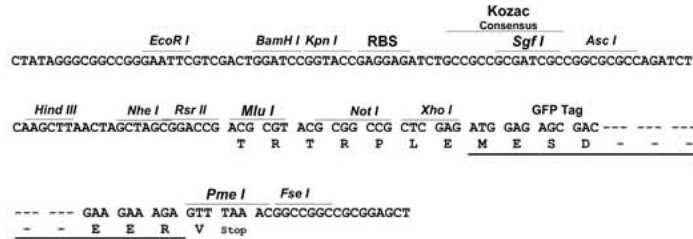
TRTRPLEMESDESGLPAMEIECRITGTLNGVEFELVGGEGTPEQGRMTNKMSTKGALTFSPYLLSHV
 MGYGFYHFGTYPSGYENPFLHAINNGGYNTRIEKYEDGGVLHVSFSYRYEAGRVIGDFKVMGTGFPEP
 SVIFTDKIIRS NATVEHLHPMGDNDLDGSFTRTFSLRDGGYSSVVD SHMHFKSAIHPSILQNGGPMFA
 FRRVEEDHSNTELGIVEYQHAFKTPDADAGEERV

Restriction Sites:

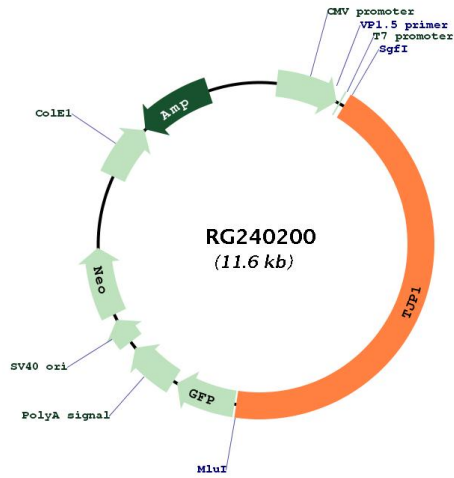
Sgfl-MluI

Cloning Scheme:

Cloning sites used for ORF Shutting:



Plasmid Map:



ACCN: NM_001301026

ORF Size: 5076 bp

OTI Disclaimer:	<p>Due to the inherent nature of this plasmid, standard methods to replicate additional amounts of DNA in E. coli are highly likely to result in mutations and/or rearrangements. Therefore, OriGene does not guarantee the capability to replicate this plasmid DNA. Additional amounts of DNA can be purchased from OriGene with batch-specific, full-sequence verification at a reduced cost. Please contact our customer care team at custsupport@origene.com or by calling 301.340.3188 option 3 for pricing and delivery.</p> <p>The molecular sequence of this clone aligns with the gene accession number as a point of reference only. However, individual transcript sequences of the same gene can differ through naturally occurring variations (e.g. polymorphisms), each with its own valid existence. This clone is substantially in agreement with the reference, but a complete review of all prevailing variants is recommended prior to use. More info</p>
OTI Annotation:	<p>This clone was engineered to express the complete ORF with an expression tag. Expression varies depending on the nature of the gene.</p>
Components:	<p>The ORF clone is ion-exchange column purified and shipped in a 2D barcoded Matrix tube containing 10ug of transfection-ready, dried plasmid DNA (reconstitute with 100 ul of water).</p>
RefSeq:	<p>NM_001301026.2</p>
RefSeq Size:	<p>7570 bp</p>
RefSeq ORF:	<p>5079 bp</p>
Locus ID:	<p>7082</p>
Cytogenetics:	<p>15q13.1</p>
Protein Families:	<p>Druggable Genome</p>
Protein Pathways:	<p>Adherens junction, Epithelial cell signaling in Helicobacter pylori infection, Gap junction, Tight junction, Vibrio cholerae infection</p>
MW:	<p>190.1 kDa</p>
Gene Summary:	<p>This gene encodes a member of the membrane-associated guanylate kinase (MAGUK) family of proteins, and acts as a tight junction adaptor protein that also regulates adherens junctions. Tight junctions regulate the movement of ions and macromolecules between endothelial and epithelial cells. The multidomain structure of this scaffold protein, including a postsynaptic density 95/disc-large/zona occludens (PDZ) domain, a Src homology (SH3) domain, a guanylate kinase (GuK) domain and unique (U) motifs all help to co-ordinate binding of transmembrane proteins, cytosolic proteins, and F-actin, which are required for tight junction function. Alternative splicing results in multiple transcript variants encoding different isoforms. [provided by RefSeq, Aug 2017]</p>