

Product datasheet for **RG239831**

A2ML1 (NM_001282424) Human Tagged ORF Clone

Product data:

Product Type:	Expression Plasmids
Product Name:	A2ML1 (NM_001282424) Human Tagged ORF Clone
Tag:	TurboGFP
Symbol:	A2ML1
Synonyms:	CPAMD9; OMS; p170
Mammalian Cell Selection:	Neomycin
Vector:	pCMV6-AC-GFP (PS100010)
E. coli Selection:	Ampicillin (100 ug/mL)



[View online »](#)

ORF Nucleotide Sequence:

>RG239831 representing NM_001282424.
 Blue=ORF Red=Cloning site Green=Tag(s)

```
GCTCGTTAGTGAACCGTCAGAATTTTGTAAACGACTCACTATAGGGCGGCCGGGAATTCGTGACTG
GATCCGGTACCGAGGAGATCTGCCGCCACGATCGCC
ATGTTAATAGGGAAGGAAGTTTGGTGATGGAGGGGCAGAAACACCTGAACCTAAGAAGAAAGGACTG
AAAGCCCTCTTCTCTCTCACTGACCTCACTCGAGACTGGCCCTGATCCTTCCCTGGTGATCTAT
GCCATTTTCCAGTGGAGGTGTTGTAGCTGACAAAATTCAGTTCAGTCGAGATGTGCTTTGACAAT
CAGGTTTCCCTTGCTTCTCCCCCTCCAGCAGCTTCCAGGAGCAGAAGTGGAGCTGCAGCTGCAGGCA
GCTCCCGGATCCCTGTGTGCGCTCCGGGCGGTGGATGAGAGTGTCTTACTGCTTAGGCCAGACAGAGAG
CTGAGCAACCGCTCTGTCTATGGGATGTTTCCATTCTGGTATGGTCACTACCCCTATCAAGTGGCTGAG
TATGATCAGTGTCCAGTGTCTGGCCATGGGACTTTCCTCAGCCCTCATTGACCCAATGCCCAAGGG
CATTGAGCCAGCGTTCATTATCTGGAGGCCCTGTTCTCTGAAGGCACGGACCTTTTCAGCTTTTTC
CGGGACGTGGCCTGAAAATACTGTCCAATGCCAAAATCAAGAAGCCAGTAGATTGCAGTCACAGATCT
CCAGAATACAGCACTGCTATGGGTGCAGGCGGTGGTCCAGAGGCTTTTGAGTCATCAACTCCTTTA
CATCAAGCAGAGGATTCTCAGGTCGCCAGTACTTCCAGAGACCTGGCTCTGGGATCTGTTTCTATT
GGTAACTCGGGGAAGGAGGCGGTCCACGTCACAGTTTCTGACGCCATCACCGAGTGGAAAGCGATGAGT
TTCTGCACTTCCAGTCAAGAGGCTTCCGGCTTTCACCCACTGTTGGACTAACTGCTTTCAAGCCGTTT
TTTGTGACCTGACTCTCCCTTACTCAGTAGTCCGTGGGGAATCCTTTCGTCTTACTGCCACCATCTTC
AATTACCTAAAGGATTGCATCAGGGTTCAGACTGACCTGGCTAAATCGCATGAGTACCAGCTAGAATCA
TGGGCAGATTCTCAGACCTCCAGTTGTCTCTGTGCTGATGAAGCAAAAACCCACCACTGGAACATCACA
GCTGTCAAATGGGTACATTAACCTTACTATTAGTACAAAGATTCTGGACAGCAATGAACCATGTGGG
GGCCAGAAGGGTGTGTTCCCAAAAAGGGCCGAAGTGACACGCTCATCAAGCCAGTTCTCGTCAAACCT
GAGGGAGTCTGTGGAGAAGACACACAGCTCATTGCTGTGCCAAAAGGAAAGGTGGCATCTGAATCT
GTCTCCCTGGAGCTCCAGTGGACATTGTTCTGACTCGACCAAGGCTTATGTTACGTTCTGGGAGAC
ATTATGGGCACAGCCCTGCAGAACCTGGATGGTCTGGTGCAGATGCCAGTGGCTGTGGCAGCAGAAC
ATGGTCTGTTTGTCCCATCATCTATGTCTTGCAGTACCTGGAGAAGGCAGGGCTGCTGACGGAGGAG
ATCAGGTCTCGGGCAGTGGGTTTCTGGAAATAGGGTACCAGAAGGAGCTGATGTACAAACACAGCAAT
GGCTCATACAGTGCCTTTGGGGAGCGAGATGGAAATGGAAACACATGGCTGACAGCGTTTGTCAAAAA
TGCTTTGGCCAAGCTCAGAAATTCATCTTATTGATCCCAAGAACATCCAGGATGCTCTCAAGTGGATG
GCAGGAAACCAGCTCCCAAGTGGCTGCTATGCCAACGTGGGAAATCTCCTTACACAGCTATGAAGGT
GGTGTGATGATGAGGTCTCCTTACTGCTGATGTGACAGCTGCATTGCTGGAGATGGGAAAGGATGTA
GATGACCAATGGTGAAGTCAAGGTCTACGGTGTCTCAAGAATTCGGCCACCTCCACGACCAACCTCTAC
ACACAGGCCCTGTTGGCTTACATTTTCTCCCTGGCTGGGGAATGGACATCAGAAACATTCTCCTTAAA
CAGTTAGATCAACAGGCTATCATCTCAGGAGAATCCATTTACTGGAGCCAGAAACCTACTCCATCATCG
AACGCCAGCCCTTGGTCTGAGCCTGCGGCTGTAGATGTGGAACCTCACAGCATATGCATTGTTGGCCAG
CTTACCAAGCCCAGCCTGACTCAAAGGAGATAGCGAAGGCCACTAGCATAGTGGCTTGGTTGGCCAAG
CAACGCAATGCATATGGGGCTTCTCTTACTCAGGATACTGTAGTTGCTCTCCAAGCTTTGCCAAA
TATGCCACTACCGCTACATGCCATCTGAGGAGATCAACCTGGTTGTAATAATCCACTGAGAATTTCCAG
CGCATTCAACATACAGTCAGTTAACAGATTGGTATTTTCAGCAGGATACCCTGCCAATGTCCCTGGA
ATGTACACGTTGGAGGCTCAGGCCAGGCTGTGTCTATGTGCAGACGGTGTGAGATACAATTTCTC
CCTCCCAAAAATGAAGACCTTTAGTCTTAGTGTGGAATAGGAAAAGCTAGATGTGAGCAACCGACT
TCACCTCGATCCTTACTCTCACTATTACACACAGTTATGTGGGAGCCGTAGCTCTTCAATATGGCT
ATTGTGGAAGTGAAGATGCTATCTGGGTTCACTCCATGGAGGGACCAATCAGTTACTTCTCCAGCAA
CCCCTGGTGAAGAAGTTGAATTTGGAAGTACACACTTAACATTTACTTGGATGAGCTCATTAAAGAC
ACTCAGACTTACACCTTACCATCAGCCAAAGTGTGCTGGTCAACCACTTGAACCGCAACCATCAAG
GTCTATGACTACTACCTACCAGATGAACAGGCAACAATTCAGTATTCTGATCCCTGTGAA
ACGCGTACGCGGCCGCTCGAG - GFP Tag - GTTTAAAC
```

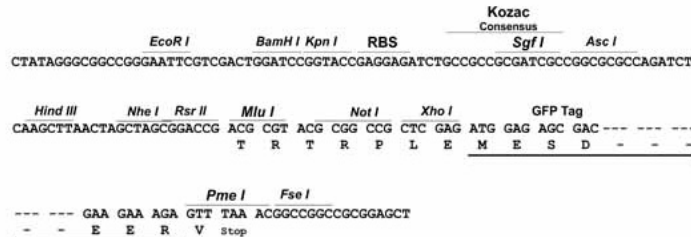
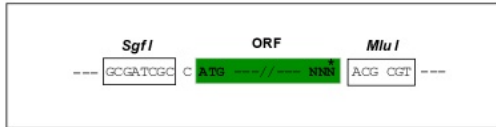
Protein Sequence: >Peptide sequence encoded by RG239831
 Blue=ORF Red=Cloning site Green=Tag(s)

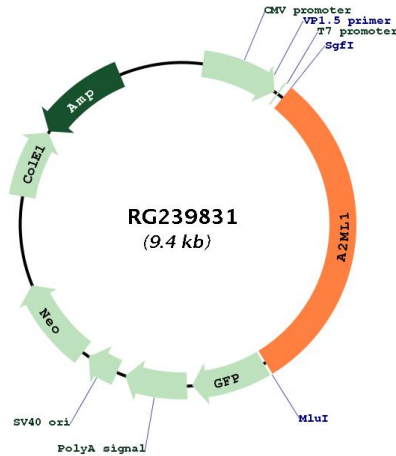
MLIGKGSVMEGQKHLNSKKKGLKASFSLSLTFTSRLAPDPSLVIYAIFPSGGVVADKIQFSVMCFDN
 QVSLGFSPSQQLPGALEVELQQAAPGSLCALRAVDESVLLLRDPRELSNRSVYGMFFFWYGHYPYQVAE
 YDQCPVSGPWDFPQPLIDPMPQGHSSQRSIIWRPSFSEGTDLFSFRDVLGKILSNAKIKKPVDCSHRS
 PEYSTAMGAGGGHPEAFESSTPLHQAEDSQVRQYFPETWLWDLFPIGNSGKEAVHVTVPDAITWKAMS
 FCTSQSRGFLSPTVGLTAFKPFVDLTLPSVSVRGESFRLTATIFNYLKDCIRVQTDLAKSHEYQLES
 WADSQTSSCLCADEAKTHHWNITAVKLGHNFTISTKILDSNEPCGGQKGFVPQKGRSDTLIKPVLVKP
 EGVLVEKTHSSLLCPKGVASESVSLELPVDIVPDSTKAYVTVLGDMGTALQNL DGLVQMPSGCGEQN
 MYLFAPIIYVLQYLEKAGLLTEEIRSRVGFLEIGYQKELMYKHSNGSYSAFGERDGNNTWLTAFVTK
 CFGQAQKFIIDPKNIQDALKWMAGNQLPSGCYANVGNLLHTAMKGGVDEVSLEYVTAALLEMVKDV
 DDPMSVQLRCLKNSATSTNL YTQALLAYIFSLAGEMDIRNILLKQLDQQAIISGESIYWSQKTPSS
 NASPWSEPAADVVELTAYALLAQLTKPSLTQKEIAKATSIVAWLAKQRNAYGGFSSQTQDVTVALQALAK
 YATTAYMPSEEINLVVKSTENFQRTFNIIQSVNRLVFQDQTLPNVPGMYTLEASGQCVVYQTVLRYNIL
 PPTNMKTFSLSVEIGKARCEQPTSPRSLTLTIHTSYVGSRSSNMAIVEVKMLSFGSPMEGNTQLLLQQ
 PLVKKVEFGTDLNIYLDLDELKNTQTYTFTISQSVLVTNLKPATIKVYDYLPDEQATIQYSDPCE
 TRTRPLEMESDESGLPAMEIECRITGTLNGVEFELVGGEGTPEQGRMTNKMSTKGALTFSPYLLSHV
 MGYGFYHFGTYPYSGYENPFLHAINNGGYNTRIEKYEDGGVLHVSFSYRYEAGRVIGDFKVMGTGFPED
 SVIFTDKIIRSNATVEHLHPMGDNDLDGSFTRTFSLRDGGYSSVVDSDMHFKSAIHPSILQNGGPMFA
 FRRVEEDHSNTELGIVEYQHAFKTPDADAGEERV

Restriction Sites: SgfI-MluI

Cloning Scheme:

Cloning sites used for ORF Shutting:



Plasmid Map:


ACCN: NM_001282424

ORF Size: 2889 bp

OTI Disclaimer: The molecular sequence of this clone aligns with the gene accession number as a point of reference only. However, individual transcript sequences of the same gene can differ through naturally occurring variations (e.g. polymorphisms), each with its own valid existence. This clone is substantially in agreement with the reference, but a complete review of all prevailing variants is recommended prior to use. [More info](#)

OTI Annotation: This clone was engineered to express the complete ORF with an expression tag. Expression varies depending on the nature of the gene.

Components: The ORF clone is ion-exchange column purified and shipped in a 2D barcoded Matrix tube containing 10ug of transfection-ready, dried plasmid DNA (reconstitute with 100 ul of water).

RefSeq: [NM_001282424.2](#), [NP_001269353.1](#)

RefSeq Size: 3789 bp

RefSeq ORF: 2892 bp

Locus ID: 144568

UniProt ID: [A8K2U0](#)

Cytogenetics: 12p13.31

MW: 106.5 kDa

Gene Summary:

This gene encodes a member of the alpha-macroglobulin superfamily. The encoded protein is thought to be an N-glycosylated monomeric protein that acts as an inhibitor of several proteases. It has been shown to form covalent interactions with proteases, and has been reported as the p170 antigen recognized by autoantibodies in the autoimmune disease paraneoplastic pemphigus (PNP; PMID:20805888). Mutations in these gene have also been associated with some cases of Noonan syndrome (NS; PMID:24939586) as well as some cases of otitis media (PMID:26121085). Alternative splicing results in multiple transcript variants encoding different isoforms. [provided by RefSeq, Aug 2015]