

Product datasheet for **RG239805**

CTNNA2 (NM_001282598) Human Tagged ORF Clone

Product data:

Product Type:	Expression Plasmids
Product Name:	CTNNA2 (NM_001282598) Human Tagged ORF Clone
Tag:	TurboGFP
Symbol:	CTNNA2
Synonyms:	CAP-R; CAPR; CDCBM9; CT114; CTNR
Mammalian Cell Selection:	Neomycin
Vector:	pCMV6-AC-GFP (PS100010)
E. coli Selection:	Ampicillin (100 ug/mL)



[View online »](#)

ORF Nucleotide Sequence:

>RG239805 representing NM_001282598.
 Blue=ORF Red=Cloning site Green=Tag(s)

```

GCTCGTTTAGTGAACCGTCAGAATTTTGTAAACGACTCACTATAGGGCGGCCGGGAATTCGTGACTG
GATCCGGTACCGAGGAGATCTGCCGCCACGATCGCC
ATGTCTGGGTTGATCTGCCTTCAATATGGGCTGTGGCATGGGCAGAAGATTGATTTTGGGGCCCCAGG
AGACTCGCTTCAAAGAAATAGAGGTGAAGGGAGCATGACTTCGGCACTTACCTATCATTCTGAAATGG
GACCCCAAAGTTTGGAAATCCGGACGCTAACAGTGAAAAGGCTGTTGGAGCCACTTGTACACAGGTG
ACTACACTTGTCAACACAAGCAACAAAGGCCCATCTGGTAAAAAGAAAGGGAGGTCAAAGAAAGCCCAT
GTACTAGCTGCCTCTGTAGAGCAAGCCACTCAGAATTTCTGGAAAAGGGTGAACAGATCGTAAGGAG
AGTCAAGATCTCAAAGAAGAGTTGGTGGCTGCTGTAGAGGATGTGCGCAAAACAAGGTGAGACGATGCGG
ATCGCCTCTCCGAGTTTGCAGATGACCCTTCTCGTGGTAAAGCGCGGCACCATGGTACGGGCGGCA
AGGGCTTTGCTCTCCGCGGTGACACGCTTACTCATCTGGCGGACATGGCAGATGTCATGAGACTTTTA
TCCCATCTGAAAATTGTGAAGAGGCCCTGGAAGCTGTAAAAATGCTACAAATGAGCAAGACCTTGCA
AACCGTTTTAAAGAGTTTGGGAAAGAGATGGTGAACCTTAACTATGTAGCAGCAAGAAGACAACAGGAG
CTGAAGGATCCTCACTGTGGGATGAGATGGCAGCCGCCGAGGGGCTCTGAAGAAGAATGCCACAATG
CTGTACACGGCCTCTCAAGCATTCTCCGCCACCCAGATGTGCGCGCTACGAGAGCCAACCGAGATTAT
GTGTTCAAACAAGTCCAGGAGGCCATCGCCGGCATCTCCAATGCTGCTCAAGCTACCTCGCCCACTGAC
GAAGCCAAGGGCCACACGGGCATCGCGGAGCTGGCTGCGGCTCTTAATGAGTTTGACAATAAGATTATC
CTGGACCCCATGACGTTTCCAGCGAGGCCAGGTTCCGGCCGCTCCCTGGAGGAGAGGCTGGAGAGCATATC
AGCGGCGCAGCGCTGATGGCCGACTCCTCTGCACGCGAGACGACCGGCGGAGAGGATCGTGGCGGAG
TGCAACGCCGTGCGGCAGGCGCTCCAGGACCTGCTCAGCGAGTACATGAATAACTGGAAGGAAAGAA
AAAGGAGATCCTCTCAACATTGCGATTGATAAGATGACTAAGAAAAACAAGAGATCTAAGGAGACGCTT
CGGAAAGCAGTGATGGATCACATATCTGACTCTTCTGAAACCAATGTTCTTTGCTAGTTCTCATT
GAGGCTGCAAAGAGCGGAAATGAAAAGGAAGTGAAGAATATGCCCAAGTTTTCCGTGAGCATGCCAAC
AACTGGTAGAGTTGCCAATTTGGCCTGTTCCATCTCCAACAATGAAGAAGGGGTGAAATTAGTTCGG
ATGGCAGCCACCCAGATTGACAGCCTGTGTCCCGAGTCAATGCCGCTCTGACACTGGCTGCCCGG
CCACAGAGCAAAGTTGCTCAGGATAACATGGACGCTTCAAAGACCAGTGGGAGAAGCAGGTCCGAGTG
TTGACAGAGGCCGTGGATGACATCACCTCAGTGGATGACTTCTCTGTCTCAGAAAATCACATCTTG
GAGGATGTGAACAAGTGTGTGATAGCCCTCAAGAGGGCGATGTGGACACTCTGGACCGGACTGCAGGG
GCCATCAGGGGCCGGCAGCTCGAGTCATACATCATCAATGCTGAGATGGAGAATATGAAGCTGGG
GTTTATACTGAGAAGGTGTTGGAAGCTACAAAATTGCTTTCTGAAACAGTGATGCCACGCTTCGCTGAA
CAAGTAGAGGTTGCCATTGAAGCCTGAGTGCCAACGTTCTCAACCGTTTGAGGAGAATGAGTTCATC
GATGCCTCTCGCCTGGTGTATGATGGCGTTCCGGGACATCAGAAAGGCTGTGCTGATGATCAGGACCCCA
GAAGAAGTAGAGGATGATTCTGACTTTGAGCAGGAAGATTATGATGTGCGTAGCAGGACAAGTGTTCAG
ACTGAGGATGACCAGTCAATGACAGGCGAGGCGCACGGGCCATCATGGCGCACTACCGCAGGAGGAG
AAGGCAAAAATAGCTGAGCAGGTGGAGATTTCCATCAAGAGAAAAGCAAGCTGGATGCAGAAGTGGCC
AAATGGGACGACAGCGGCAATGATATCATTGTACTGGCCAAGCAGATGTGTATGATCATGATGAAATG
ACAGACTTCACAAGAGGCAAAGGCCATTGAAAAATACATCTGATGTCATTAATGCTGCCAAGAAAATT
GCCGAAGCAGGTTCTCGAATGGACAAATTAGCTGCTGCTGGCTGATCAGTGTCTGATCAGCATGT
AAGCAGGATTTATTAGCCTACCTTCAACGAATTGCCTTGATTGCCATCAGCTTAATATCTGCAGCAAG
GTGAAGGCAGAAGTGCAGAATCTGGGAGGAGAGCTCATTGTGTCAGGGCTGGACAGTGCCACATCGCTT
ATCCAGGCAGCTAAAAACCTGATGAATGCTGTTGTCTCACGGTGAAGCATCCTATGTGGCCTCAACC
AAATACCAGAAGGTCTATGGGACAGCAGCTGTCAACTCACCTGTTGTGCTTGGAAAGATGAAGGCTCCA
GAGAAGAAGCCCCTTGTGAAGAGAGAAAAGCCTGAAGAATTCAGACACGAGTTCGACGAGGTTCTCAG
AAGAAACACATTTCCGCTGTACAGGCTTAAAGTGAATTCAAAGCAATGGATTCTTTC
ACGCGTACGCGGCCGCTCGAG – GFP Tag – GTTTAAAC
  
```

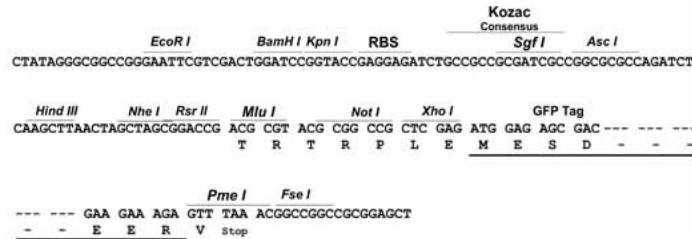
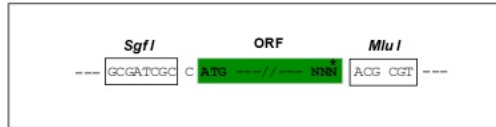
Protein Sequence: >Peptide sequence encoded by RG239805
 Blue=ORF Red=Cloning site Green=Tag(s)

MSGLICLQYGLWHGQKIDFGGPRRLQQRNREGESMTSATSPIILKWDPKSLEIRTLTVERLLEPLVTQV
 TTLVNTSNKGPSPGKKGRSKKAHVLAASVEQATQNFLEKGEQIAKESQDLKEELVAAVEDVRKQGETMR
 IASSEFADDPCCSVKRGTMVRAARALLSAVTRLLILADMADVMRLLSHLKIVEEALAEAVKNATNEQDLA
 NRFKEFGKEMVKLNYVAARRQQLKDPHCRDEMAAARGALKKNATMLYTASQAFLRHPDVAATRANRDY
 VFKQVQEAIAGISNAAQATSPTEAKGHTGIGELAAALNEFDNKIILDPMTFSEARFRPSLEERLESII
 SGAALMADSSCTRRDRRERIVAECNAVRQALQDLLSEYMNNTGRKEKGDPLNIAIDKMTKKTRDLRRQL
 RKAVMDHISDSFLETNVP LVLIEAAKSGNEKEVKEYAQVFRHANKLVEVANLACISINNEEGVKLV
 MAATQIDSLCPQVINAALTLAARPQSKVAQDNMDVFKDQWEKQVRVLTEAVDDITSVDDFLSVSENHIL
 EDVNKCVIALQEGDVTLDRTAGAIRGRAARVIHIINAEMENYEAGVYTEKVLKLLSETVMPRFAE
 QVEVAIEALSANVPQPFEEDEFIDASRLVYDGVDRIRKAVLMIRTPPELEDDSDFEQEDYDVRSTSVQ
 TEDDQLIAGQSARAIMAQLPQEEKAKIAEQVEIFHQEKSKLDAEVAKWDDSGNDIIVLAKQMCMIMMEM
 TDFTRGKGPLKNTSDVINAAKKIAEAGSRMDKLARAVADQCPDSACKQDLLAYLQRIALYCHQLNICK
 YKAEVQNLGGELIVSGLDSATSLIQAANKLMNAVVLTVKASYVASTKYQKYVGTAAVNSPVVSWKMKAP
 EKKPLVKREKPEEFQTRVRRGSQKKHISPVQALSEFKAMDSF
 TRTRPLEMESDESGLPAMEIECRITGTLNGVEFELVGGEGTPEQGRMTNKMSTKGALTFSPYLLSHV
 MGYGFYHFGTYPSTYENPFLHAINNGGYTNTRIEKYEDGGVLHVSFSYRYEAGRVIGDFKVMGTGFPED
 SVIFTDKIIRSNAIVEHLHPMGDNDLDGSFTRTFSLRDGGYSSVVDSDSHMHFSAIHPISILQNGGPMFA
 FRRVEEDHSNTELGIVEYQHAFKTPDADAGEERV

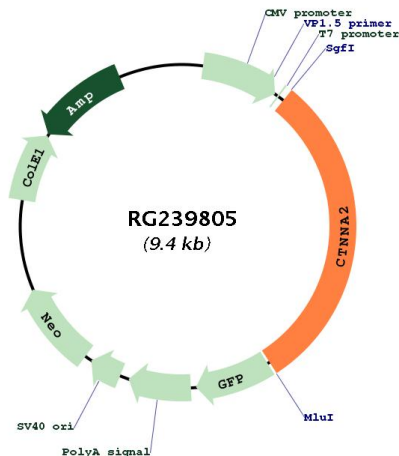
Restriction Sites: SgfI-MluI

Cloning Scheme:

Cloning sites used for ORF Shuttling:



Plasmid Map:



ACCN: NM_001282598

ORF Size: 2817 bp

OTI Disclaimer: The molecular sequence of this clone aligns with the gene accession number as a point of reference only. However, individual transcript sequences of the same gene can differ through naturally occurring variations (e.g. polymorphisms), each with its own valid existence. This clone is substantially in agreement with the reference, but a complete review of all prevailing variants is recommended prior to use. [More info](#)

OTI Annotation: This clone was engineered to express the complete ORF with an expression tag. Expression varies depending on the nature of the gene.

Components: The ORF clone is ion-exchange column purified and shipped in a 2D barcoded Matrix tube containing 10ug of transfection-ready, dried plasmid DNA (reconstitute with 100 ul of water).

RefSeq: [NM_001282598.1](#), [NP_001269527.1](#)

RefSeq Size: 3858 bp

RefSeq ORF: 2820 bp

Locus ID: 1496

UniProt ID: [P26232](#)

Cytogenetics: 2p12

Protein Families: Druggable Genome

Protein Pathways: Adherens junction, Arrhythmogenic right ventricular cardiomyopathy (ARVC), Endometrial cancer, Leukocyte transendothelial migration, Pathways in cancer, Tight junction

MW: 104.7 kDa

Gene Summary:

May function as a linker between cadherin adhesion receptors and the cytoskeleton to regulate cell-cell adhesion and differentiation in the nervous system (By similarity). Required for proper regulation of cortical neuronal migration and neurite growth (PubMed:30013181). It acts as negative regulator of Arp2/3 complex activity and Arp2/3-mediated actin polymerization (PubMed:30013181). It thereby suppresses excessive actin branching which would impair neurite growth and stability (PubMed:30013181). Regulates morphological plasticity of synapses and cerebellar and hippocampal lamination during development. Functions in the control of startle modulation (By similarity).[UniProtKB/Swiss-Prot Function]