

## Product datasheet for **RG239772**

### **MCK10 (DDR1) (NM\_001297654) Human Tagged ORF Clone**

#### **Product data:**

Product Type:	Expression Plasmids
Product Name:	MCK10 (DDR1) (NM_001297654) Human Tagged ORF Clone
Tag:	TurboGFP
Symbol:	DDR1
Synonyms:	CAK; CD167; DDR; EDDR1; HGK2; MCK10; NEP; NTRK4; PTK3; PTK3A; RTK6; TRKE
Mammalian Cell Selection:	Neomycin
Vector:	pCMV6-AC-GFP (PS100010)
E. coli Selection:	Ampicillin (100 ug/mL)



[View online »](#)

**ORF Nucleotide Sequence:**

>RG239772 representing NM\_001297654.  
 Blue=ORF Red=Cloning site Green=Tag(s)

```

GCTCGTTTAGTGAACCGTCAGAATTTTGTAAACGACTCACTATAGGGCGGCCGGGAATTCGTGACTG
GATCCGGTACCGAGGAGATCTGCCGCCCGGATCGCC
ATGGGACCAGAGGCCCTGTATCTTTACTGCTGCTCTTGGTGCCAAGTGGAGATGCTGACATGAAG
GGACATTTTGTACTCTGCTGCAAGTCCGCTATGCCCTGGGCATGCAGGACCGGACCATCCAGACAGTGAC
ATCTCTGCTTCCAGCTCCTGGTCAGATTCCACTGCCGCCGCCACAGCAGTTGGAGAGCAGTGACGGG
GATGGGGCCTGGTGCCCCGAGGGTCGGTGTTCCTCAAGGAGGAGGAGTACTTGCAGGTGGATCTACAA
CGACTCCACCTGGTGGCTCTGGTGGGCACCCAGGGACGGCATGCCGGGGCCCTGGGCAAGGAGTTCTCC
CGGAGCTACCGGCTGCGTTACTCCCGGGATGGTCGCCGCTGGATGGGCTGGAAGGACCGCTGGGGTCAG
GAGGTGATCTCAGGCAATGAGGACCTGAGGGAGTGGTGTGAAGGACCTTGGGCCCCCATGGTTGCC
CGACTGGTTGCTTACCCCCGGGCTGACCGGGTCATGAGCGTCTGTCTGCGGGTAGAGCTCTATGGC
TGCTCTGGAGGGATGGACTCCTGTCTTACACCGCCCTGTGGGGCAGACAATGATTTTATCTGAGGCC
GTGTACCTCAACGACTCCACCTATGACGGACATACCGTGGGCGGACTGCAGTATGGGGTCTGGGCCAG
CTGGCAGATGGTGTGGTGGGGCTGGATGACTTTAGGAAGAGTCAGGAGCTGCGGGTCTGGCCAGGCTAT
GACTATGTGGGATGGAGCAACCACAGCTTCTCCAGTGGCTATGTGGAGATGGAGTTTGGTTGACCCG
CTGAGGGCCTTCCAGGCTATGCAGGTCCACTGTAACAACATGCACACGCTGGGAGCCCGTCTGCCTGGC
GGGGTGGAAATGTCGCTTCCGGCTGGCCCTGCCATGGCCTGGGAGGGGGAGCCCATGCGCCACAACCTA
GGGGGCAACCTGGGGGACCCAGAGCCCGGGTGTCTCAGTGCCTTGGCGGCCGTGTGGCTCGCTTT
CTGCAGTGCCGCTTCTCTTTGCGGGCCCTGGTACTCTCAGCGAAATCTCCTTATCTCTGATGTG
GTGAACAATTCTCTCCGGCACTGGGAGGCACCTTCCCGCCAGCCCTGGTGGCCGCTGGCCACCT
CCACCAACTTCAGCAGCTTGGAGCTGGAGCCAGAGCCAGCAGCCCGTGGCCAAGCCGGGGAGC
CCGACCGCATCCTCATCGGCTGCCTGGTGGCCATCATCCTGCTCTGCTCATCATTGCCCTCATG
CTCTGGCGGCTGCACTGGCGCAGGCTCCTCAGCAAGGCTGAACGAGGGTGTGGAAGAGGAGCTGACG
GTTACCTCTCTGCTCCCTGGGGACACTATCCTCATCAACAACCGCCAGGTCCTAGAGAGCCACCCCG
TACCAGGAGCCCGGCTCGTGGGAATCCGCCCACTCTGCTCCTGTGTCCTCAATGGCTCTGCGTTG
CTGCTCTCAATCCAGCTACCGCTCCTTCTGGCCACTACGCCCGTCCCCCTCGAGGCCCGGGCCCC
CCCACACCCGCTGGGCCAAACCACCAACCCAGGCCACAGTGGGGACTATATGGAGCTGAGAAG
CCAGGCGCCCGCTTCTGCCCCACCTCCCAGAACAGCGTCCCCATTATGCCGAGGCTGACATTGTT
ACCTGCAGGGGCTCACCAGGGGCAACACCTATGCTGTGCTGCACTGCCCCAGGGGAGTCGGGGAT
GGGCCCCCGAGAGTGGATTTCCCTCGATCTCGACTCCGCTTCAAGGAGAAGCTTGGCGAGGGCCAGTTT
GGGGAGGTGCACCTGTGTGAGGTGACAGCCCTCAAGATCTGGTCACTTGTATTCCCCCTTAATGTG
CGTAAGGGACACCCTTGTGCTAGTGTCAAGATCTTACGGCCAGATGCCACCAAGAATGCCAGGAAT
GATTTCTGAAAGAGGTGAAGATCATGTGAGGCTCAAGGACCAACATCATTCCGGTGTGGCGGTG
TGTGTGACAGGACGACCCCTCTGCATGATTACTGACTACATGGAGAACGGTGACCTCAACCAGTTCTC
AGTGCCCAACAGCTGGAGGACAAGGCAGCCGAGGGGGCCCTGGGACCGGCAGGCTGCGCAGGGGCC
ACCATCAGTACCAATGCTGCTGCATGTGGCAGCCAGATCGCTCCGGCATGCGTATCTGGCCACA
CTCAACTTTGTACATCGGGACCTGGCCACGCGGAACTGCCTAGTTGGGGAAAATTTCCACATCAAATC
GCAGACTTTGGCATGAGCCGGAACCTCTATGCTGGGACTATTACCGTGTGACGGCCGGGAGTGTG
CCCATCCGCTGGATGGCCTGGGAGTGCATCCTCATGGGAAGTTCACGACTGCGAGTGACGTGTGGCC
TTTGGTGTGACCTGTGGGAGGTGCTGATGCTCTGTAGGGCCAGCCCTTGGGAGCTCACCGACGAG
CAGGTATCGAGAACGCGGGGAGTTCTTCCGGGACCAGGGCCGGCAGGTGTACCTGTCCCGGCCCT
GCCTGCCCGCAGGGCCTATATGAGCTGATGCTTCCGGTGTGAGCCGGGAGTCTGAGCAGCGACCC
TTTTCCAGCTGCATCGGTTCTGGCAGAGGATGCACTCAACACGGTG
ACGCGTACGCGGCCGCTCGAG - GFP Tag - GTTTAAAC
  
```

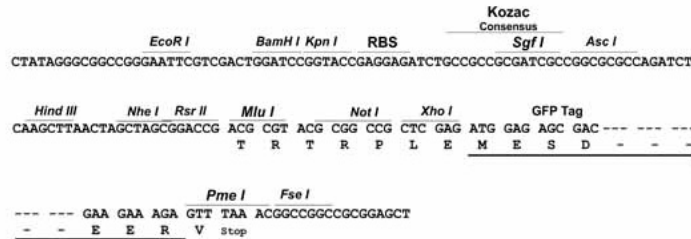
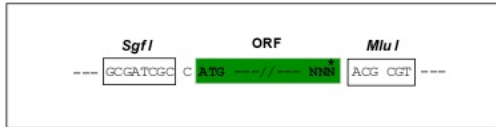
Protein Sequence: >Peptide sequence encoded by RG239772  
 Blue=ORF Red=Cloning site Green=Tag(s)

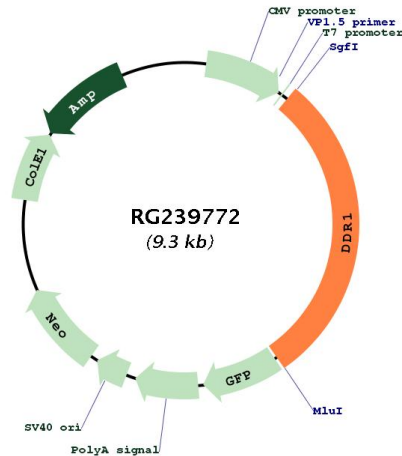
MGPEALSSLLLLL VASGDADMKGHFDPKCRYALGMQDRTIPDSISASSSWSDSTAARHSRLESSDG  
 DGAWCPAGSVFPKEEYLQVDLQRLHL VAL VGTQGRHAGGLGKEFSRSYRLRYSRDGRRWGKDRWGQ  
 EVISGNEDEPGVVLKDLGPPMVARL VRFYPRADRVMSVCLRVEL YGCLWRDGLLSYAPVGTMYLSEA  
 VYLDNSTYDGHTVGGLQYGGGLQLADGVVGLDDFRKSQELRVWPGYDYVGSNHSFSSGYVEMEFEDR  
 LRAFQAMQVHCNMHTLGARLPGGVECFRRGPAMAWEGEPMRHLGGNLGDPRARAVSVPLGGRVARF  
 LQCRFLFAGPWLLFSEISFISDVVNNSSPALGGTFPPAPWPPGPPPTNFSSLELEPRGQPVAKAEGS  
 PTAILIGCLVAIILLLLIIALMLWRLHWRLLSKAERRVLEELTVHLSVPGDTILINNRPGPREPPP  
 YQEPRPRGNPPHSAPCVNPGSALLSNPAYRLLLATYARPPRGPPTPAWAKPTNTQAYSGDYMEPEK  
 PGAPLLPPPQNSVPHYAEADIVTLQGVGTGNTYAVPALPPGAVGDGPPRVDFPRSRLRFKEKLGEGQF  
 GEVHLCEVDSPQDLVSLDFPLNVRKGHPLLVAVKILRPDATKNARNDFLKEVKIMSRLKDPNIIRLLGV  
 CVQDDPLCMTIDYMENGLNQFLSAHQLEDKAAEGAPGDGQAAQGPTISYPMLLHVAAQIASGMYLAT  
 LNFVHRDLATRNLVGENFTIKIADFGMSRNL YAGDYRVRVQGRAVLP IRWMAWECILMGKFTTASDVA  
 FGVTLWEVLMCRAQPFQQLTDEQVIENAGEFFRDQGRQVYLSRPPACPQGLYELMLRCWSRESEQRP  
 FSQHRFLAEDALNTV  
 TRTRPLEMESDESGLPAMEIECRITGTLNGVEFELVGGEGTPEQGRMTNKMSTKGALTFSPYLLSHV  
 MGYGFYHFGTYPSTYENPFLHAINNGGYNTRIEKYEDGGVLHVSFSYRYEAGRVIGDFKVMGTGFPED  
 SVIFTDKIIRSNTVEHLHPMGDNDLDGSFTRTFSLRDGGYSSVVDSDSHMHFKSAIHP SILQNGGPMFA  
 FRRVEEDHSNTELGIVEYQHAFKTPDADAGEERV

Restriction Sites: Sgfl-MluI

Cloning Scheme:

Cloning sites used for ORF Shutting:



**Plasmid Map:**


**ACCN:** NM\_001297654

**ORF Size:** 2739 bp

**OTI Disclaimer:** The molecular sequence of this clone aligns with the gene accession number as a point of reference only. However, individual transcript sequences of the same gene can differ through naturally occurring variations (e.g. polymorphisms), each with its own valid existence. This clone is substantially in agreement with the reference, but a complete review of all prevailing variants is recommended prior to use. [More info](#)

**OTI Annotation:** This clone was engineered to express the complete ORF with an expression tag. Expression varies depending on the nature of the gene.

**Components:** The ORF clone is ion-exchange column purified and shipped in a 2D barcoded Matrix tube containing 10ug of transfection-ready, dried plasmid DNA (reconstitute with 100 ul of water).

**RefSeq:** [NM\\_001297654.1](#), [NP\\_001284583.1](#)

**RefSeq Size:** 3833 bp

**RefSeq ORF:** 2742 bp

**Locus ID:** 780

**UniProt ID:** [Q08345](#)

**Cytogenetics:** 6p21.33

**Protein Families:** Druggable Genome, Protein Kinase, Transmembrane

**MW:** 101.1 kDa

**Gene Summary:**

Receptor tyrosine kinases play a key role in the communication of cells with their microenvironment. These kinases are involved in the regulation of cell growth, differentiation and metabolism. The protein encoded by this gene belongs to a subfamily of tyrosine kinase receptors with homology to Dictyostelium discoideum protein discoidin I in their extracellular domain, and that are activated by various types of collagen. Expression of this protein is restricted to epithelial cells, particularly in the kidney, lung, gastrointestinal tract, and brain. In addition, it has been shown to be significantly overexpressed in several human tumors. Alternatively spliced transcript variants encoding different isoforms have been described for this gene. [provided by RefSeq, Feb 2011]