

## Product datasheet for **RG239745**

### **PRKCBP1 (ZMYND8) (NM\_001281780) Human Tagged ORF Clone**

#### **Product data:**

Product Type:	Expression Plasmids
Product Name:	PRKCBP1 (ZMYND8) (NM_001281780) Human Tagged ORF Clone
Tag:	TurboGFP
Symbol:	ZMYND8
Synonyms:	PRKCBP1; PRO2893; RACK7
Mammalian Cell Selection:	Neomycin
Vector:	pCMV6-AC-GFP (PS100010)
E. coli Selection:	Ampicillin (100 ug/mL)



[View online »](#)

**ORF Nucleotide  
Sequence:**

>RG239745 representing NM\_001281780.  
 Blue=ORF Red=Cloning site Green=Tag(s)

```
GCTCGTTTAGTGAACCGTCAGAATTTTGTAAACGACTCACTATAGGGCGGCCGGGAATTCGTGCACTG
GATCCGGTACCGAGGAGATCTGCCGCCCGGATCGCC
ATGAATGAAATCGAAGTATGTCCAGAATGTTATCTAGCTGCTTGCCAAAAACGAGATAACTGGTTTTGT
GAGCCTTGTAGCAATCCACATCCTTTGGTCTGGGCCAAACTGAAGGGTTTCCATTCTGCGCTGCAAAA
GCTCTAAGGGATAAAGACGGGCAGGTTCGATGCCGATTCTTTGGACAACATGACAGGGCCTGGGTTCCA
ATAAATAATTGCTACCTCATGTCTAAAGAAATTCCTTTTTCTGTGAAAAAGACTAAGAGCATCTTCAAC
AGTGCCATGCAAGAGATGGAGGTTTACGTGGAGAACATCCGCAGGAAGTTTGGGGTTTTTAATTACTCT
CCATTTAGGACACCCTACACACCCAACAGCCAGTATCAAATGCTGCTCGATCCCACCAACCCACAGCGCC
GGCACTGCCAAGATAGACAAGCAGGAGAAGGTCAAGCTCAACTTTGACATGACGGCATCCCCAAGATC
CTGATGAGCAAGCCTGTGCTGAGTGGGGGCACAGGCCCGGATTCCTTGTGGATATGCCGCGCTCC
CCCATGAGCACAACCTTCTGTGCACACGGGCTCCGACGTGGAGCAGGATGCTGAGAAGAAGGCCACG
TCGAGCCACTTCAGTGCAGCAGGAGTCCATGGACTTCTGGATAAGAGCACAGCTTCACCAGCCTCC
ACCAAGACGGGACAAGCAGGGAGTTTATCCGGCAGCCAAAGCCCTTCTCCTCAACTGTCAGCTCCT
ATCACGACGAAAACGGACAAAACCTCCACCACCGCAGCATCCTGAATCTTAACTGGATCGAAGCAAAA
GCTGAGATGGATTTGAAGGAGCTGAGCGAGTCCGTCAGCAACAGTCCACCCCTGTTCTCTCATCTCT
CCCAAGCGCCAGATTCGTAGCAGTTCCAGCTGAATCTTGACAAGACCATAGAGAGTTGCAAAGCACAA
TTAGGCATAAATGAAATCTCGGAAGATGTCTATACGGCCGTAGAGCACAGCGATTTCGGAGGATCTGAG
AAGTCAGATAGTAGCGATAGTGAGTATACAGTGATGATGAGCAGAAGTCTAAGAACGAGCCAGAAGAC
ACAGAGGACAAAGAAGGTTGTGAGTGGACAAGAGCCATCTGCTGTTAAAAAAGCCAAAGCCTACA
AACCCAGTGGAGATTAAGAGGAGCTGAAAAGCACGTCACCAGCCAGCAGAGAAGCCAGCAGCCTGGAGCA
GTCAAGGACAAGGCCAGCCCTGAGCCTGAGAAGGACTTTCCGAAAAGGCAAAAACCTTCACCTCACCCC
ATAAAGGATAAACTGAAGGGAAAAGATGAGACGGATTCCCAACAGTCCATTTGGGCTGGACTCTGAT
TCAGAGAGCGAATTGTATAGATTTAGGAGAAGACATTCTGGGCGGGAGGGTCGAAAAAATAAGAAG
GAACCCAAAGAACCATCTCCAAACAGGATGTTGTAGGTAAAACCTCCACCATCCACGACGGTGGGCAGC
CATTCTCCCCGGAAACACCGGTGCTCACCCGCTCTCCGCCAAACTTCGCGGCTGGCCACAGCC
ACCACCAGCACGTCCTCCACGGTACCCTCACGGCCCCGGCCCCCGCCACAGGAAGCCAGTGAAA
AAGCAGAGGCCGCTTTTACCGAAGGAGACTGCCCGGCCGTGCAGCGGGTCGTGTGGAATCATCAACT
GTCAGCAGAAGGAGATCACACAGAGCCATCCACGTCCACCATCACCTGGTGACCAGCACACAGTCA
TCGCCCTGGTACCAGCTCGGGTCCATGAGCACCTTGTGTCTCAGTCAACGCTGACCTGCCATC
GCCACTGCCTCAGCTGATGTCGCGCTGATATTGCCAAGTAACTAGCAAAATGATGGATGCAATAAAA
GGAACAATGACAGAAATATAACAGATCTTTCTAAAAACACTACTGGAAGCAATAGCTGAGATTCGC
AGGCTGAGGATCGAGATAGAGAAGCTCCAGTGGCTGCACCAGCAAGAGCTCTCCGAAATGAAACACAAC
TTAGAGCTGACCATGGCGGAGATGCGGCAGAGCCTGGAGCAGGAGCGGGACCGGCTCATCGCCGAGGTG
AGAAGCAGCTGGAGTTGGAGAAGCAGCAGCGGTGGATGAGACCAAGAAGAAGCAGTGGTGCGCCAAC
TGCAAGAAGGAGGCCATCTTTACTGCTGTTGGAACACCAGCTACTGTGACTACCCCTGCCAGCAAGCC
ACTGGCCTGAGCACATGAAGTCTGCACCCAGTCAGTACTGCTCCTCAGCAGGAAGCGGATGCTGAG
GTGAACACAGAAAACACTAAATAAGTCTCCAGGGGAGCTCCTCGAGCACACAATCAGCACCTTCAGAA
ACGGCCAGCGCCTCCAAAGAGAAGGAGACGTCAGCTGAGAAAAGCAAGGAGAGTGCTCGACCTTGAC
CTTTCTGGCTCCAGAGAGACGCCCTCCTCATTCTCTTAGGCTCCAACCAAGGCTCTGACCATTCGCG
AGTAATAAATCCAGTTGGAGCAGCAGTATGAGAAGAGGGGATCGACACGTTCCGATCACAACACAGT
ACCAGCACGAAGAGCCTCCTCCGAAAGAGTCTCGGCTGGACACCTTCTGGGAC
ACGCGTACGCGGCCGCTCGAG - GFP Tag - GTTTAAAC
```

**Protein Sequence:** >Peptide sequence encoded by RG239745  
 Blue=ORF Red=Cloning site Green=Tag(s)

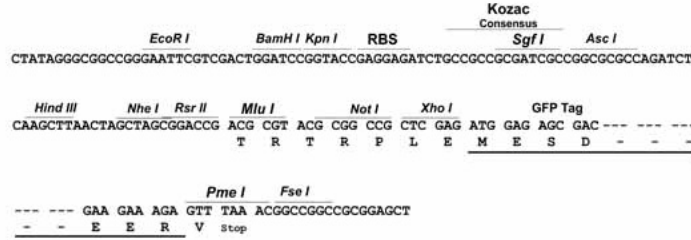
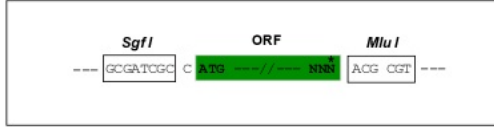
```

MNEIEVCPECYLAACQKRDNWFCEPCSNPHPLVWAKLKGFFFWPAKALRDKDGQVDARFFGQHDRAWVP
INNCYLMSKEIPFSVKKTKSIFNSAMQEMEYVENIRRKFGVFNYSPPFRTPYTPNSQYQMLLDPTNPSA
GTAKIDKQEKVKLNFDMTASPKILMSKPVLSGGTGRRISLSDMPRSPMSTNSSVHTGSDVEQDAEKKAT
SSHFSAEESMDFLDKSTASPASTKTGQAGSLGSPKPFSPQLSAPITTKTDKTSTTGSILNLDNRK
AEMDLKELSESQQQSTPVPLISPKRQIRSRFQLNLDKTIESCQAQLGINEISEDVYTAVEHSDSESDSE
KSDSSDSEYISDDEQKSKNEPEDTEDKEGCQMDKEPSAVKPKPKPTNPVEIKEELKSTSPASEKADPGA
VKDKASPEPEKDFSEKAKPSPHPIKDKLKGKDETDSPVHLGLDSDSESELVIDLGEDHSGREGRKNKK
EPKEPSPKQDVVGKTPPSTTVGSHSPETPVLTRSSAQTSAAAGATATTSTSTVTVTAPAPAATGSPVK
KQRPLLPKETAPAVQRVVWNSSTVQQEITQSPSTSTITLVTSTQSSPLVTSSGSMSTLVSSVNADLPI
ATASADVAADIAKYTSKMMDAIKGTMTEIYNDLSKNTTGSTIAEIRRLRIEIEKLQWLHQELSEMKNH
LELTMAEMRQSLERDRLIAEVKKQLELEKQAVDETKKKQWCANCKKEAIFYCCWNTSYCDYPCQQA
HWPEHMKSQSATAPQQEADAEVNTETLNKSSQGSSSSTQSAPSETASASKEKETSAEKSKEGSLTD
LSGSRETPSSILLGSNQGSDHSRNSKSSWSSSDEKRGSTRSDHNTSTSTKSLLPKESRLDTFWD
TRTRPLEMESDESGLPAMEIECRITGTLNGVEFELVGGGEGTPEQGRMTNKMKSTKGALTFSPYLLSHV
MGYGFYHFGTYPSTYSGYENPFLHAINNGGYNTRIEKYEDGGVLHVSFSYRYEAGRVIGDFKVMGTGFPE
SVIFTDKIIIRSNATVEHLHPMGDNDLDGSFTRTFSLRDGGYSSVVDSHMHFKSAIHPSILQNGGPMFA
FRRVEEDHSNTELGIVEYQHAFKTPDADAGEERV
  
```

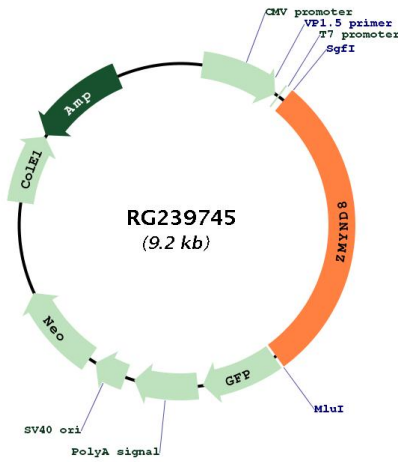
**Restriction Sites:** Sgfl-MluI

Cloning Scheme:

Cloning sites used for ORF Shutting:



Plasmid Map:



ACCN:

NM\_001281780

<b>ORF Size:</b>	2676 bp
<b>OTI Disclaimer:</b>	The molecular sequence of this clone aligns with the gene accession number as a point of reference only. However, individual transcript sequences of the same gene can differ through naturally occurring variations (e.g. polymorphisms), each with its own valid existence. This clone is substantially in agreement with the reference, but a complete review of all prevailing variants is recommended prior to use. <a href="#">More info</a>
<b>OTI Annotation:</b>	This clone was engineered to express the complete ORF with an expression tag. Expression varies depending on the nature of the gene.
<b>Components:</b>	The ORF clone is ion-exchange column purified and shipped in a 2D barcoded Matrix tube containing 10ug of transfection-ready, dried plasmid DNA (reconstitute with 100 ul of water).
<b>RefSeq:</b>	<a href="#">NM_001281780.3</a>
<b>RefSeq Size:</b>	5380 bp
<b>RefSeq ORF:</b>	2679 bp
<b>Locus ID:</b>	23613
<b>Cytogenetics:</b>	20q13.12
<b>Protein Families:</b>	Druggable Genome, Transcription Factors
<b>MW:</b>	98.2 kDa
<b>Gene Summary:</b>	The protein encoded by this gene is a receptor for activated C-kinase (RACK) protein. The encoded protein has been shown to bind in vitro to activated protein kinase C beta I. In addition, this protein is a cutaneous T-cell lymphoma-associated antigen. Finally, the protein contains a bromodomain and two zinc fingers, and is thought to be a transcriptional regulator. Multiple transcript variants encoding several different isoforms have been found for this gene. [provided by RefSeq, Jul 2008]