

Product datasheet for **RG239546**

TLE 1 (TLE1) (NM_001303103) Human Tagged ORF Clone

Product data:

Product Type:	Expression Plasmids
Product Name:	TLE 1 (TLE1) (NM_001303103) Human Tagged ORF Clone
Tag:	TurboGFP
Symbol:	TLE1
Synonyms:	ESG; ESG1; GRG1
Mammalian Cell Selection:	Neomycin
Vector:	pCMV6-AC-GFP (PS100010)
E. coli Selection:	Ampicillin (100 ug/mL)



[View online »](#)

ORF Nucleotide
Sequence:

>RG239546 representing NM_001303103.

Blue=ORF Red=Cloning site Green=Tag(s)

```
GCTCGTTAGTGAACCGTCAGAATTTTGTAAACGACTCACTATAGGGCGGCCGGGAATTCGTGACTG
GATCCGGTACCGAGGAGATCTGCCGCCACGATCGCC
ATGTTCCCGCAGAGCCGGCACCCGACCCGACCCAGGCTGCAGGCCAGCCCTTCAAGTTCACATATCCCG
GAGTCCCTGGACCGGATTAAGAGGAATCCAGTTCCTGCAGGCCAGTATCACAGCCTTAAATTGGAA
TGTGAGAACTGGCAAGTGAAAAGACAGAAATGCAGAGGCACTATGTGATGATTATGAAATGCATAT
GGATTAACATTGAAATGCAAAAACAGACTGAAATCGCCAAGAGATTGAATACGATTTGTGCACAAGTC
ATCCCATTTCTGTCTCAGGAACATCAACAACAGGTGGCCAGGCTGTTGAACGTGCCAAACAGGTGACC
ATGGCAGAATTGAATGCCATCATCGGGTACGTGGCCTACCAGGTCTACCTCCTACACAGCAGCAGTTG
CAAGCTCAGCATCTTTCTCATGGCCACGGACCCCAAGTCCCTTACGCCTCACCCCTCGGGACTTCAG
CCTCCTGGAATCCCGCCCTCGGGGCAGTGCCGGCCTTCTTGCCTGTCTAGTGTCTGAGTGGGCAG
TCTCACTTGGCAATAAAGATGACAAGAAGCACCAGATGCAGAGCACCACAGAGACAGAGACCCGGC
ACAAGTAATCCCTCCTGGTCCCAGACAGTCTAAGAGGCACAGATAAACGCAGAAATGGACTGAATTT
TCCAATGACATCAAGAAAAGGAAGTGGATGATAAGGACTCCAGCCTATGACAGTGTGGTGACAAA
AGCGATGACAACCTTAGTTGTGGATGTGTCTAATGAGGACCTTCTTCCGCGAGCAAGCCCTGCCAC
TCGCCCCGGGAAAATGGAATCGACAAAATCGCCTGCTAAAGAAGGATGCTTCTAGCAGTCCAGTTC
ACGGCCTCCTCGGCAAGTTCACCTTCTTTGAAATCCAAAGAAATGAGCTTGCATGAAAAGCCAGCAG
CCTGTTCTGAAATCCAGCACACCAACGCCTCGGAGCGACATGCCAACGCCGGCACCAGCGCCACTCCA
GGCCTCCGTCCAGGTCTCGGCAAGCCTCCAGCCATAGACCCCTCGTTAACCAAGCGGCAGCTGGCTTG
AGGACACCCCTGGCAGTGCCTCGGCCATATCCTGCTCCTTTGGGATGGTCCCCACGCTGGCATGAAC
GGCAGCTGACCCAGCCAGGCGCTGCCTACGCCAGTTTACACAACATGTCGCCCCAGATGAGCGCCGCA
GCCGCCGCGGCCCGCTGGTGGCCTACGGGCGCTCCCCATGGTGGGTTTGTATCCTCCCTCACATG
AGAGTACCTACCATTCCTCCAAACCTGGCAGGAATCCCTGGGGGAAACCTGCATACTCCTTCCAGTT
ACTGCAGACGGTCAGATGCAGCCTGTCCCTTTCCCGGACGCCCTCATCGACCCGGAATCCCGCGG
CATGCTCGCCAGATCAACACCCTCAACCACGGGGAGGTGGTGTGCGCTGTGACCATCAGCAACCCACG
AGACACGTGTACACAGGCGGGAAGGGCTGCGTCAAGGTCTGGGACATCAGCCACCCTGGCAATAAGAGC
CCTGTCTCCAGCTCGACTGTCTGAACAGAGACAATTATCCGTTCTGTAAATGCTACCCGATGGC
TGCACCTCATAGTGGGAGGGGAAGCCAGTACTTTGTCCATTTGGGACCTGGCGGCTCCAACCCCGCGC
ATCAAGGCGGAGCTGACGTCCTCGGCCCGCCTGCTACGCCCTGGCCATCAGCCCGATCCAAGGTC
TGCTTCTCATGTGCAGCGACGGCAACATCGCTGTGTGGGATCTGCACAACCAGACACTAGTGAGGCAA
TTCCAGGGCCACACAGACGGAGCCAGCTGTATTGACATTTCTAATGATGGCACCAGCTCTGGACGGT
GGTTTGGACAACACAGTCAGGTCTGGGACCTGCGCGAGGGGCGGCAGCTGCAGCAGCAGCACTTACC
TCCCAGATCTTCTCCCTGGGACTGCCACCCGGGAGTGGCTGGCAGTGGGCATGGAGAGCAGCAAT
GTGGAGGTGTGCACGTGAACAAGCCTGACAAGTACCAGTGCACCTGCATGAGAGCTGCGTGTCTCC
CTGAAATTTGCTTACTGTGTAATGGTTTGTGAGTACTGGAAAAGATAACCTCCTCAATGCTTGGCGG
ACCCCTATGGAGCCAGCATATCCAGTCCAAAGAGTCCCTCGTCAGTGTAGCTGTGACATCTCTGTG
GATGATAAGTACATAGTCACTGGCTCGGGGACAAGAAGGCTACAGTCTATGAAGTCATCTAC
ACGCGTACGCGGCCGCTCGAG - GFP Tag - GTTAAAC
```

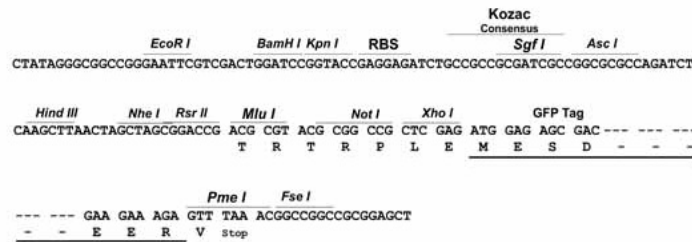
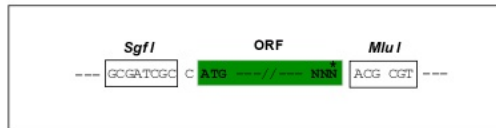
Protein Sequence: >Peptide sequence encoded by RG239546
 Blue=ORF Red=Cloning site Green=Tag(s)

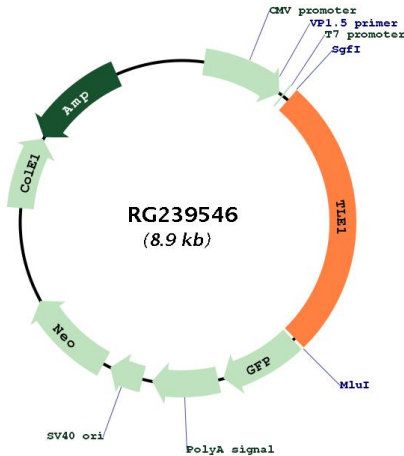
MFPQSRHPTPHQAAGQPFKFTIPESLDRIKEEFQFLQAQYHSLKLECEKLAASEKTEMQRHYVMYEMSY
 GLNIEMHKQTEIAKRLNTICAQVIPFLSQEHQQQVAQAVERAKQVTMAELNAIIGVRGLPGLPPTQQQL
 QAQHL SHHGPPVPL TPHP SGLQPPGIPPLGGSAGLLALSSALSGQSHLAIKDDKKHDAEHHRDREPG
 TSNSLLVPDSL RGTDKRRNGPEF SNDIKKRKVDKSSHYSDGDKSDDNLVVDVSNEDPSSPRASPAH
 SPRENGIDKNRLLKKDASSPASTASSASTSLKSKEMSLHEKASTPVLKSSSTPTPRSDMPTPGTSATP
 GLRPGLGKPPAIDPLVNQAAAGLRTP LAVPGYPAPFGMVPHAGMNGELTSPGAAYASLHNMSPQMSAA
 AAAAVVAYGRSPMVGFDPPPHMRVPTIPP NLAGIPGGKPAYSFHVTADGQMOPVFPFDALIGPGIPR
 HARQINTLNHGEVYCAVTISNPTRHYVTGGKGCVKVWDISHPGNKSPVSQLDCLNRDNYIRSKLLPDG
 CTLIVGGEASTLSIWDLAAPTTRIKAELTSSAPACYALAI SPDSKVCFSCCSDGNI AVWDLHNQTLVRQ
 FQHTD GASCIDISNDGTLWTGGLDNTVRSWDLREGRQLQQHDFTSQIFSLGYCPTGEWLVGMESSN
 VEVLHVNKPKDYQLHLHESC VLSLKFA YCGKWFVSTGKDNLLNAWRTPY GASIFQSKESSVLSCDISV
 DDKIYIVTGS GDKKATVYEVIIY
TRTRPLEMESDESGLPAMEIECRITGTLNGVEFELVGGEGTPEQGRMTNKMSTKGALTFSPYLLSHV
MGYGFYHFGTYP SGYENPFLHAINNGGYNTRIEKYEDGGVLHVSFSYRYEAGRVIGDFKVMGTGFPE
SVIFTDKIIRSNATVEHLHPMGDNDLDGSFTRTFLRDGGYSSVVD SHMHFKA IHP SILQNGGPMFA
FRRVEEDHSNTELGIVEYQHAFKTPDADAGEERV

Restriction Sites: SgfI-MluI

Cloning Scheme:

Cloning sites used for ORF Shuttling:



Plasmid Map:


ACCN: NM_001303103

ORF Size: 2340 bp

OTI Disclaimer: The molecular sequence of this clone aligns with the gene accession number as a point of reference only. However, individual transcript sequences of the same gene can differ through naturally occurring variations (e.g. polymorphisms), each with its own valid existence. This clone is substantially in agreement with the reference, but a complete review of all prevailing variants is recommended prior to use. [More info](#)

OTI Annotation: This clone was engineered to express the complete ORF with an expression tag. Expression varies depending on the nature of the gene.

Components: The ORF clone is ion-exchange column purified and shipped in a 2D barcoded Matrix tube containing 10ug of transfection-ready, dried plasmid DNA (reconstitute with 100 ul of water).

RefSeq: [NM_001303103.1](#), [NP_001290032.1](#)

RefSeq Size: 4167 bp

RefSeq ORF: 2343 bp

Locus ID: 7088

UniProt ID: [Q04724](#)

Cytogenetics: 9q21.32

Protein Families: Transcription Factors

MW: 84.6 kDa

Gene Summary:

Transcriptional corepressor that binds to a number of transcription factors. Inhibits NF-kappa-B-regulated gene expression. Inhibits the transcriptional activation mediated by FOXA2, and by CTNNB1 and TCF family members in Wnt signaling. The effects of full-length TLE family members may be modulated by association with dominant-negative AES. Unusual function as coactivator for ESRRG.[UniProtKB/Swiss-Prot Function]