

Product datasheet for **RG239352**

CEACAM5 (NM_001291484) Human Tagged ORF Clone

Product data:

Product Type:	Expression Plasmids
Product Name:	CEACAM5 (NM_001291484) Human Tagged ORF Clone
Tag:	TurboGFP
Symbol:	CEACAM5
Synonyms:	CD66e; CEA
Mammalian Cell Selection:	Neomycin
Vector:	pCMV6-AC-GFP (PS100010)
E. coli Selection:	Ampicillin (100 ug/mL)



[View online »](#)

ORF Nucleotide
Sequence:

>RG239352 representing NM_001291484.
Blue=ORF Red=Cloning site Green=Tag(s)

```
GCTCGTTTAGTGAACCGTCAGAATTTTGTAAACGACTCACTATAGGGCGGCCGGGAATTCGTGCGACTG
GATCCGGTACCGAGGAGATCTGCCGCCGCGATCGCC
ATGGAGTCTCCCTCGGCCCTCCACACAGATGGTGCATCCCCTGGCAGAGGCTCCTGCTCACAGCCTCA
CTTCTAACCTTCTGGAACCCGCCACCACTGCCAAGCTCACTATTGAATCCACGCCGTTCAATGTGCGCA
GAGGGGAAGGAGGTGCTTCTACTTGTCCACAATCTGCCCCAGCATCTTTTGGCTACAGCTGGTACAAA
GGTGAAAGAGTGGATGGCAACCGTCAAATTATAGGATATGTAATAGGAACTCAACAAGCTACCCAGGG
CCCGCATACAGTGGTCGAGAGATAATATACCCCAATGCATCCCTGCTGATCCAGAACATCATCCAGAAT
GACACAGGATTCTACACCCTACACGTCATAAAGTCAGATCTTGTGAATGAAGAAGCAACTGGCCAGTTC
CGGGTATACCCGGAGCTGCCAAGCCCTCCATCTCCAGCAACAACCTCAAACCCGTGGAGGACAAGGAT
GCTGTGGCCTTCACTGTGAACCTGAGACTCAGGACGCAACCTACCTGTGGTGGGTAACAATCAGAGC
CTCCCGGTGAGTCCAGGCTGCAGCTGTCCAATGGCAACAGGACCCTCACTCTATTCAATGTCACAAGA
AATGACACAGCAAGCTACAAATGTGAAACCCAGAACCAGTGAGTGCCAGGCGCAGTGATTCAAGTCAATC
CTGAATGTCCTCTATGGCCCGGATGCCCCACCAATTTCCCTCTAACACATCTTACAGATCAGGGGAA
AATCTGAACCTCTCCTGCCACGACGCTTAACCCACCTGCACAGTACTCTTGGTTTGTCAATGGGACT
TTCCAGCAATCCACCAAGAGCTCTTTATCCCAACATCACTGTGAATAATAGTGGATCCTATACGTGC
CAAGCCCAATAACTCAGACACTGGCCTCAATAGGACCACAGTCAAGCAGTACAGTCTATGCAGAGCCA
CCCAAACCTTCAACACAGCAACAACCTCAACCCCGTGGAGGATGAGGATGCTGTAGCCTTAACCTGT
GAACCTGAGATTCAGAACAACCTACCTGTGGTGGGTAATAATCAGAGCCTCCCGTCAAGTCCAGG
CTGCAGCTGTCCAATGACAACAGGACCCTCACTCTACTCAGTGTCAACAAGGAATGATGTAGGACCCTAT
GAGTGTGGAATCCAGAACAATTAAGTGTGACCACAGCAGCCAGTCACTCTGAATGTCCTCTATGGC
CCAGACGACCCCACTTTCCCTCATACACCTATTACCGTCCAGGGTGAACCTCAGCCTCTCCTGC
CATGCAGCCTCTAACCCACCTGCACAGTATTCTTGGCTGATTGATGGGAACATCCAGCAACACACAAA
GAGCTCTTTATCTCCAACATCACTGAGAAGAACAGCGGACTCTATACCTGCCAGGCAATAACTCAGCC
AGTGGCCACAGCAGGACTACAGTCAAGACAATCACAGTCTCTGCGGAGCTGCCAAGCCCTCCATCTCC
AGCAACAACCTCAAACCCGTGGAGGACAAGGATGCTGTGGCCTTCACTGTGAACCTGAGGCTCAGAAC
ACAACCTACCTGTGGTGGGTAATGGTCAGAGCCTCCAGTCAAGTCCAGGCTGCAGCTGTCCAATGGC
AACAGGACCCTCACTCTATTCAATGTCACAAGAAATGACGCAAGAGCCTATGTATGTGGAATCCAGAAC
TCAGTGAGTGCAACCCGAGTGACCCAGTACCCTGGATGTCCTCTATGGCCGGACACCCCATCATT
TCCCCCAGACTCGTCTTACCTTTCCGGAGCGAACCTCAACCTCTCCTGCCACTCGGCCTTAACCCA
TCCCCGAGTATTCTTGGCGTATCAATGGGATACCGCAGCAACACACACAAGTTCTTTATCGCCAAA
ATCACGCCAAATAATAACGGGACCTATGCCTGTTTTGTCTCTAACTTGGCTACTGGCCGCAATAATTCC
ATAGTCAAGAGCATCACAGTCTCTGCATCTGGAACCTCTCCTGGTCTCTCAGCTGGGGCCACTGTCCGG
ATCATGATTGGAGTGTGGTTGGGTTGCTCTGATA
ACGCGTACGCGGCCGCTCGAG - GFP Tag - GTTTAAAC
```

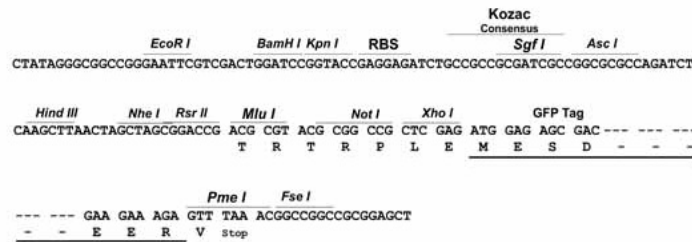
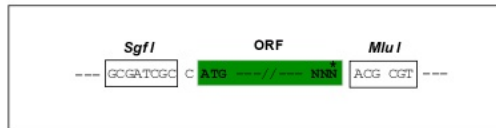
Protein Sequence: >Peptide sequence encoded by RG239352
 Blue=ORF Red=Cloning site Green=Tag(s)

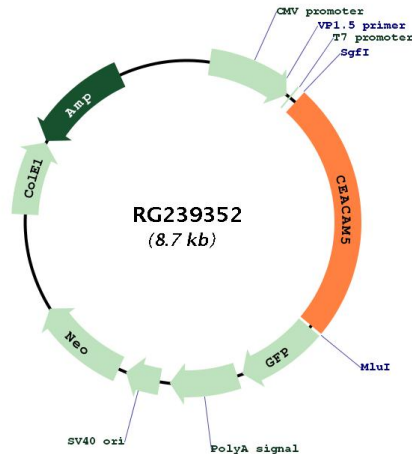
MESPSAPPHRWCIWQRLLLTASLLTFWNPPTAKLTIESTPFNVAEGKEVLLL VHNLPQH LFGYSWYK
 GERVDGNRQIIGYVIGTQQATPGPAYSGREIIYPNASLLIQNI IQNDTGFYTLHVIKSDLVNEEATGQF
 RYVPELKPSSISSNNSKPVEDKDAVAFTCEPETQDATYLWWVNNQSLPVSRLQLSNGNRTLTLFNVTR
 NDTASYKCETQNPVSARRSDSVILNVL YGPDAPTI SPLNTSYRSGENLNL SCHAASNPPAQYSWFVNGT
 FQQSTQELFIPNITVNNSGSYTCQAHNSDTGLNRTT VTTITVYAEPPKPFITSNNSNPVEDEDAVALTC
 EPEIQNTTYLWWVNNQSLPVSRLQLSNDNRTL TLLSVTRNDVGPYECGIQNELSVDHSDPVILNVL YG
 PDDPTISPSYTYRPGVNL SLSCHAASNPPAQYSWLIDGNIQQHTQELFISNITEKNSGLYTCQANNSA
 SGHSRTTVKTIITVSAELKPSSISSNNSKPVEDKDAVAFTCEPEAQNTTYLWWVNGQSLPVSRLQLSNG
 NRTLTLFNVTRNDARAYVCGIQNSVSANRSDPVTLDVLYGPDTP IISPPDSSYLSGANLNL SCSASNP
 SPQYSWRINGIPQQHTQVLFIAKITPNNGTYACFVSNLATGRNNSIVKSITVSASGTSPLSAGATVG
 IMIGLVGVALI
 TRTRPLEMESDESGLPAMEIECRITGTLNGVEFELVGGGEGTPEQGRMTNKMKSTKGALTFSPYLLSHV
 MGYGFYHFGTYPSTYENPFLHAINNGGYTNRIEKYEDGGVLHVFSYRYEAGRVIGDFKVMGTGFPED
 SVIFTDKIIRSNAIVEHLHPMGDNDLDGSFTRTFLRDGGYSSVVD SHMHFKSAIHPSILQNGGPMFA
 FRRVEEDHSNTELGIVEYQHAFKTPDADAGEERV

Restriction Sites: SgfI-MluI

Cloning Scheme:

Cloning sites used for ORF Shuttling:



Plasmid Map:


ACCN: NM_001291484

ORF Size: 2106 bp

OTI Disclaimer: The molecular sequence of this clone aligns with the gene accession number as a point of reference only. However, individual transcript sequences of the same gene can differ through naturally occurring variations (e.g. polymorphisms), each with its own valid existence. This clone is substantially in agreement with the reference, but a complete review of all prevailing variants is recommended prior to use. [More info](#)

OTI Annotation: This clone was engineered to express the complete ORF with an expression tag. Expression varies depending on the nature of the gene.

Components: The ORF clone is ion-exchange column purified and shipped in a 2D barcoded Matrix tube containing 10ug of transfection-ready, dried plasmid DNA (reconstitute with 100 ul of water).

RefSeq: [NM_001291484.3](#)

RefSeq Size: 3516 bp

RefSeq ORF: 2109 bp

Locus ID: 1048

UniProt ID: [P06731](#)

Cytogenetics: 19q13.2

MW: 77.2 kDa

Gene Summary:

This gene encodes a cell surface glycoprotein that represents the founding member of the carcinoembryonic antigen (CEA) family of proteins. The encoded protein is used as a clinical biomarker for gastrointestinal cancers and may promote tumor development through its role as a cell adhesion molecule. Additionally, the encoded protein may regulate differentiation, apoptosis, and cell polarity. This gene is present in a CEA family gene cluster on chromosome 19. Alternative splicing results in multiple transcript variants. [provided by RefSeq, Jul 2015]