

Product datasheet for **RG239288**

CD22 (NM_001278417) Human Tagged ORF Clone

Product data:

Product Type:	Expression Plasmids
Product Name:	CD22 (NM_001278417) Human Tagged ORF Clone
Tag:	TurboGFP
Symbol:	CD22
Synonyms:	SIGLEC-2; SIGLEC2
Mammalian Cell Selection:	Neomycin
Vector:	pCMV6-AC-GFP (PS100010)
E. coli Selection:	Ampicillin (100 ug/mL)



[View online »](#)

ORF Nucleotide
Sequence:

>RG239288 representing NM_001278417.
Blue=ORF Red=Cloning site Green=Tag(s)

```
GCTCGTTTAGTGAACCGTCAGAATTTTGTAAACGACTCACTATAGGGCGGCCGGGAATTCGTGACTG
GATCCGGTACCGAGGAGATCTGCCGCCCGCATCGCC
ATGTCTCTGTGGCTCCTAGAGGGGGTCCAATGAGGCAGGCTGCTGTACCTCGACCTCCTTGACCATC
AAGTCTGTCTTACCCGGAGCGAGCTCAAGTTCTCCCCACAGTGGAGTCACCATGGGAAGATTGTGACC
TGCCAGCTTCAGGATGCAGATGGGAAGTTCTCTCCAATGACACGGTGCAGCTGAACGTGAAGCACACC
CCGAAGTTGGAGATCAAGGTCACTCCCAGTGATGCCATAGTGAGGGAGGGGGACTCTGTGACCATGACC
TGCGAGGTGAGCAGCAGCAACCCGGAGTACACGACGGTATCCTGGCTCAAGGATGGGACCTCGTGAAAG
AAGCAGAATACATTACGCTAACCTGCGCAAGTGACCAAGGACCAGAGTGGGAAGTACTGCTGTGACG
GTCTCCAATGACGTGGGCCCGGAAGTTCGGAAGAAGTGTCTGCAAGTGCAGTATGCCCGGAACCT
TCCACGGTTCAGATCCTCACTACCCGGCTGTGGAGGGAAGTCAAGTCGAGTTTCTTTGCATGCTACTG
GCCAATCCTCTTCCAACAAATTACACGTGGTACCACAATGGGAAAGAAATGCAGGGAAGGACAGAGGAG
AAAGTCCACATCCCAAAGATCCTCCCCTGGCACGCTGGGACTTATCCTGTGTGGCAGAAAACATCTT
GGTACTGGACAGAGGGGGCCGGGAGCTGAGCTGGATGTCCAGTATCCTCCAAGAAGGTGACCACAGTG
ATTCAAAACCCCATGCCGATTGAGAAGGAGACACAGTGACCCCTTCTGTAACTACAATCCAGTAAC
CCCAGTGTACCCGGTATGAATGGAAACCCCATGGCGCCTGGGAGGAGCCATCGCTTGGGGTGTGAAAG
ATCCAAAACGTTGGCTGGGACAACAACCATCGCTGCGCAGCTTGAATAGTTGGTGTGCTGGGGCC
TCCCCTGTGCGCCTGAATGTCCAGTATGCCCCCGAGACGTGAGGGTCCGGAAAAAACAAGCCCTTCC
GAGATTCCTCTGAAACTCGGTGAGCTCCAATGTGACTTCTCAAGCAGCCACCCCAAAGAAGTCCAG
TTCTTCTGGGAGAAAAATGGCAGGCTTCTGGGAAAGAAAGCCAGCTGAATTTTACTCCATCTCCCCA
GAAGATGCTGGGAGTTACAGCTGCTGGGTGAACAACCCATAGGACAGACAGCGTCCAAGGCCTGGACA
CTTGAAGTGTGTATGCACCCAGGAGGCTGCGTGTGCCATGAGCCCGGGGGACCAAGTATGGAGGGG
AAGAGTGAACCCCTGACCTGTGAGAGCGACGCCAACCCCTCCCGTCTCCCACTACACCTGGTTGACTGG
AATAACCAAAGCCTCCCCTACCACAGCCAGAAGCTGAGATTGGAGCCGGTGAAGTCCAGCACTCGGGT
GCCTACTGGTGCCAGGGGACCAACAGTGTGGCAAGGGCCGTTGCGCTCTCAGCACCCCTCACCGTCTAC
TATAGCCCGGAGACCATCGGCAGGCGAGTGGCTGTGGGACTCGGGTCTGCTCGCCATCCTCATCCTG
GCAATCTGTGGGCTCAAGCTCCAGCGACGTTGGAAGAGGACACAGAGCCAGCAGGGGCTTCAGGAGAT
TCCAGCGCCAGAGCTTCTTTGTGAGGAATAAAAAGTTAGAAGGGCCCCCTCTCTGAAGGCCCCAC
TCCCTGGGATGCTACAATCCAATGATGGAAGATGGCATTAGCTACACCACCTGCGCTTTCGGAGATG
AACATACCACGAACTGGAGATGCAGAGTCTCAGAGATGCAGAGACCTCCCCGGACTGCGATGACACG
GTCACTTATTCAGCATTGCAACAAGCGCCAAGTGGGCGACTATGAGAACGTCATTCCAGATTTTCCAGAA
GATGAGGGGATTCATTACTCAGAGCTGATCCAGTTTGGGGTGGGGAGCGGCCTCAGGCACAAGAAAAAT
GTGGACTATGTGATCCTCAAACAT
ACGCGTACGCGGCCGCTCGAG - GFP Tag - GTTAAAC
```

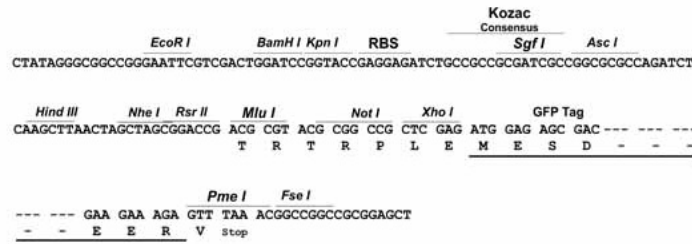
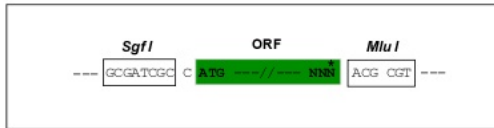
Protein Sequence: >Peptide sequence encoded by RG239288
 Blue=ORF Red=Cloning site Green=Tag(s)

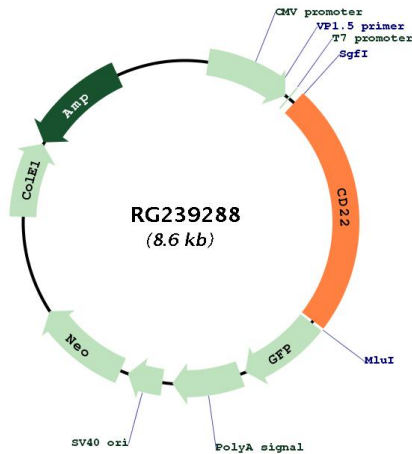
MSLWLLEGVPMRQAAVTSTSLTIKSVFTRSELKFSQWSHHGKIIVTCQLQDADGKFLSNDTVQLNVKHT
 PKLEIKVTPSDAIVREGDSVTMTCEVSSSNPEYTTVSWLKDGTSLKKQNTFTLNLREVTKDQSGKYCCQ
 VSNDVGPGRSEEVFLQVQYAPEPSTVQILHSPAVEGSQVEFLCMSLANPLPTNYTWYHNGKEMQGRTEE
 KVHIPKILPWHAGTYSVAENILGTGQRGPGAELDVQYPPKVVTVIQNPMPPIREGDVTLSHCNYSNSN
 PSVTRYEWKPHGAWEEPVLGVLKIQNVGWDNTTIIACAACNSWCSWASPVALNVQYAPRDVVRKIKPLS
 EIHSGNSVSLQCDFSSSHPEVQFFWEKNGRLLGKESQLNFDSISPEDAGSYSCWVYNSIGQTASKAWT
 LEVLYAPRRLRVSMSPGDQVMEGKSATLTCESDANPPVSHYTWFDWNNQSLPYHSQKLRLEPKVQVHSG
 AYWCQGTNSVGKRSPLSTLTVYSPETIGRRVAVGLGSCLAAILLAICGLKLRRWKRTQSQQGLQEN
 SSGQSFFVRNKKVRRAPLSEPHSLGCYNPMMEDI SYTTLRFPEMNIPTGDAESSEMQRPPDCDDT
 VTYSALHKRQVGDYENVIPDFPEDEGIHSELIQFVGGERPQAQENVYVILKH
 TRTRPLEMESDEGLPAMEIECRITGTLNGVEFELVGGEGTPEQGRMTNKMKSTKGALTFSPYLLSHV
 MGYGFYHFGTYPSTYENPFLHAINNGGYTNTRIEKYEDGGVLHVSFSYRYEAGRVIGDFKVMGTGFPEDE
 SVIFTDKIIRSNAIVEHLHPMGDNDLDGSFTRTFLRDGGYSSVVDSHMHFKSAIHPISILQNGGPMFA
 FRRVEEDHSNTELGIVEYQHAFKTPDADAGEERV

Restriction Sites: SgfI-MluI

Cloning Scheme:

Cloning sites used for ORF Shuttling:



Plasmid Map:


ACCN:	NM_001278417
ORF Size:	2025 bp
OTI Disclaimer:	The molecular sequence of this clone aligns with the gene accession number as a point of reference only. However, individual transcript sequences of the same gene can differ through naturally occurring variations (e.g. polymorphisms), each with its own valid existence. This clone is substantially in agreement with the reference, but a complete review of all prevailing variants is recommended prior to use. More info
OTI Annotation:	This clone was engineered to express the complete ORF with an expression tag. Expression varies depending on the nature of the gene.
Components:	The ORF clone is ion-exchange column purified and shipped in a 2D barcoded Matrix tube containing 10ug of transfection-ready, dried plasmid DNA (reconstitute with 100 ul of water).
RefSeq:	NM_001278417.2
RefSeq Size:	3132 bp
RefSeq ORF:	2028 bp
Locus ID:	933
UniProt ID:	P20273
Cytogenetics:	19q13.12
Protein Families:	Druggable Genome, Transmembrane

Protein Pathways:	B cell receptor signaling pathway, Cell adhesion molecules (CAMs), Hematopoietic cell lineage
MW:	75.8 kDa
Gene Summary:	Mediates B-cell B-cell interactions. May be involved in the localization of B-cells in lymphoid tissues. Binds sialylated glycoproteins; one of which is CD45. Preferentially binds to alpha-2,6-linked sialic acid. The sialic acid recognition site can be masked by cis interactions with sialic acids on the same cell surface. Upon ligand induced tyrosine phosphorylation in the immune response seems to be involved in regulation of B-cell antigen receptor signaling. Plays a role in positive regulation through interaction with Src family tyrosine kinases and may also act as an inhibitory receptor by recruiting cytoplasmic phosphatases via their SH2 domains that block signal transduction through dephosphorylation of signaling molecules. [UniProtKB/Swiss-Prot Function]