

Product datasheet for **RG239231**

ZNF133 (NM_001283002) Human Tagged ORF Clone

Product data:

Product Type:	Expression Plasmids
Product Name:	ZNF133 (NM_001283002) Human Tagged ORF Clone
Tag:	TurboGFP
Symbol:	ZNF133
Synonyms:	pHZ-13; pHZ-66; ZNF150
Mammalian Cell Selection:	Neomycin
Vector:	pCMV6-AC-GFP (PS100010)
E. coli Selection:	Ampicillin (100 ug/mL)



[View online »](#)

ORF Nucleotide
Sequence:

>RG239231 representing NM_001283002.
Blue=ORF Red=Cloning site Green=Tag(s)

```
GCTCGTTTAGTGAACCGTCAGAATTTTGTAAACGACTCACTATAGGGCGGCCGGGAATTCGTGACTG
GATCCGGTACCGAGGAGATCTGCCGCCACGATCGCC
ATGGCACACATGGCATTTCAGGGATGTGGCTGTGGATTTACCCAGGATGAGTGGAGGCTGCTGAGCCCT
GCTCAAAGGACTCTGTACAGAGAGGTGATGCTGGAGAACTACAGCAACCTGGTCTCACTGGGAATTTCA
TTTTCTAAACCAGAACTCATCACCCAGCTGGAGCAAGGGAAGAGACCTGGAGAGAGGAAAAAATGT
TCACCGCAACCTGTCCAGCAGATCCAGAGCCAGAGCTCTACCTCGATCCTTTCTGCCCTCCGGTTTC
TCCAGTCAGAAATCCCCATGCAGCATGTGCTGTGTAATCATCCCCCTGGATCTTCACATGCTTGTGT
GCAGAAGTAACATCCAGCCTGGGGATCCGGGCCAGGGGACCAGGAGAAGCAGCAACAAGCCTCTGAG
GGGAGACCCTGGAGTGATCAAGCAGAAGTCTGAGGGAGAAGTGCCATGCCTTTGTTTGAAGAACC
AAGAAAAGGACTCTGGGAGCGTTCTCCAGGCCACCCAGAGCCAGCCAGTCACTCTCGAACCGCCTC
AGAGGGGTGGAGTTAGAAGCCAGCCAGCTCAGACAGGGAACCCCTGAGGAAACAGACAAATTGTTGAAG
AGGATAGAAGTCTTAGGATTTGGAACAGTCAACTGTGGAGAGTGTGGACTGAGCTTCAGCAAGATGACA
AACCTGCTCAGTACCAGCGGATACACTCAGGGGAGAAGCCCTACGTGTGTGGGGTATGTGAGAAGGGC
TTCAGCCTAAAGAAGAGCCTCGCCAGACACCAGAAGGCACACTCGGGGGAGAAGCCAATTGTGTGCAGG
GAGTGTGGACGAGGCTTTAACCGGAAGTCAACGCTAATCATACGAAACGGACACACTCCGGTGAGAAA
CCTTACATGTGCAGTGAGTGTGGGCGAGGCTTCAGCCAGAAGTCAAACCTCATCATACACCAGAGGACA
CACTCAGGGGAAAAGCCTTACGTGTGCCGGGAATGTGGCAAAGGCTTCAGCCAGAAGTCACTGTGCGTG
AGACACCAGAGGACACACTTGGAGGAGAAGACCATCGTGTGCAGTGACTGTGGCCTGGGCTTCAGCGAC
AGGTCAAACCTCATCTCCACCAGAGGACGCACTCTGGGGAGAAGCCCTACGCTGCAAGGAGTGTGGG
CGATGCTTCAGGCAGAGGACCACCTTGTCAACCACCAGAGGACACACTCAAAGGAGAAGCCCTATGTG
TGCGGGGTGTGTGGGCACAGCTTCAGCCAGAATTCAACCCTCATCTCTCACAGGCGGACACACACTGGG
GAGAAGCCGTATGTTTGTGGGTGTGTGGGCGAGGCTTTAGTCTCAAGTCAACCTCAACAGACACCAG
AACATACACTCAGGAGAGAAGCCATTGTGTGCAAGGACTGTGGCCGGGGCTTCAGCCAGCAATCCAAC
CTCATCAGACACCAGAGGACGCACTCAGGCGAGAAGCCATGGTGTGTGGGGAGTGGGGCGAGGCTTC
AGCCAGAAGTCAAACCTTGTGACACCAGAGGACGCACTCAGGGGAGAGGCGTATGTGTGCCGAGAG
TGCGGGCGAGGCTTTAGCCACCAGGCGGTCTCATCAGGCACAAGCGGAAGCACTCGAGGGAGAAGCCC
TACATGTGCAGGCACTGTGGACTGGGCTTTGGCAATAAGTCACTCTAATTACACACAAGCGGGCTCAC
TCGGAAGAGAAGCCTTGTGTGTGCAGAGAGTGTGGCAAGGCTTTCTCCAAAAGTCAACCTCACCTTA
CATCAAATGACACATACGGGGGAGAAGCCATATGTGTGCAAGACGTGTGGGCGGGGCTTCAGCCTAAG
TCTCACCTCAGCAGACACAGGAAGACCAGTCTGTCCACCACAGACTGCCAGTGCAGCCGACCCTGAG
CCGTGTGCAGGGCAACCTTCGGATTCCTTATACTCTCTC
ACCGGTACGCGGCCGCTCGAG - GFP Tag - GTTTAAAC
```

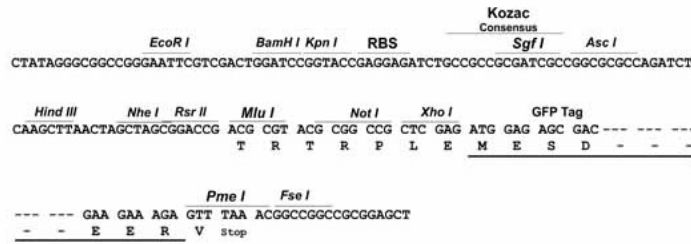
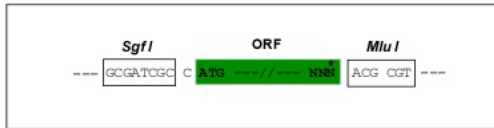
Protein Sequence: >Peptide sequence encoded by RG239231
 Blue=ORF Red=Cloning site Green=Tag(s)

MAHMAFRDVAVDFTQDEWRLSPAQRTRYEVMLNYSNLVSLGISFSKPELITQLEQKETWREEKCC
 SPATCPADPEPELYLDPFCPPGFSQKFPMQHVLCNHPPWIFTCLCAEGNIQPGDPGPDQEQQASE
 GRPWSDAQEGPEGEGAMPLFGRTRKRTLGAFSRPPQRQPVSSRNLGRVELEASPAQTGNPEETDKLLK
 RIEVLGFGTVNCGEGLSFSKMTNLLSHQRIHSGEKPYVCGVCEKGFSLKKSRLARHQKAHSGEKPIVCR
 ECGRGFNRKSTLIIHERTHSGEKPYMCSECGRGSQKSNLIIHQRTHSGEKPYVCRECGKFSQKSAVV
 RHQRTHLEEKTIVCSDCLGFSDRSNLISHQRTHSGEKPYACKCEGRCFRQRTTLVNHQRTHSKEKPYV
 CGVCGHSFSQNSTLISHRRHTGEKPYVCGVCGRGSFLKSHLNRHQNIHSGEKPIVCKDCGRGFSQSN
 LIRHQRTHSGEKPYVCGEGRGFSQKSNLVAHQRTHSGERPYVCRECGRFSHQAGLIRHKRHSREKP
 YMCRCGLGFGNKSALITHKRAHSEKPCVCRECGQGLQKSHLTLHQMTHTGEKPYVCKTCGRGFSLK
 SHLSRHRKTTSVHRLPVQDPPEPCAGQPSDSL YSL
 TRTRPLEMESDEGLPAMEIECRITGTLNGVEFELVGGEGTPEQGRMTNKMSTKGALTFSPYLLSHV
 MGYGFYHFGTYPSTYENPFLHAINNGGYNTRIEKYEDGGVLHVSFSYRYEAGRVIDGFKVMGTGFPED
 SVIFTDKIIRSNTAVEHLHPMGDNDLDGSFTRTFLSLRDGGYSSVVDSHMHFKSAIHPSILQNGGPMFA
 FRRVEEDHSNTELGIVEYQHAFKTPDADAGEERV

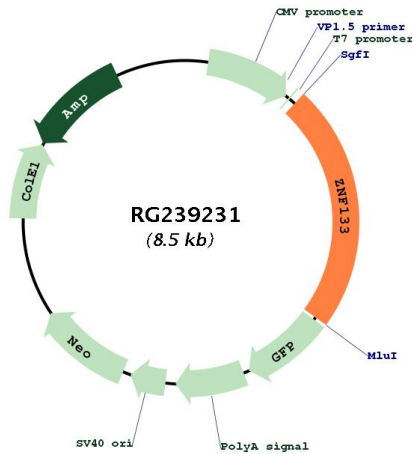
Restriction Sites: SgfI-MluI

Cloning Scheme:

Cloning sites used for ORF Shuttling:



Plasmid Map:



ACCN:	NM_001283002
ORF Size:	1971 bp
OTI Disclaimer:	The molecular sequence of this clone aligns with the gene accession number as a point of reference only. However, individual transcript sequences of the same gene can differ through naturally occurring variations (e.g. polymorphisms), each with its own valid existence. This clone is substantially in agreement with the reference, but a complete review of all prevailing variants is recommended prior to use. More info
OTI Annotation:	This clone was engineered to express the complete ORF with an expression tag. Expression varies depending on the nature of the gene.
Components:	The ORF clone is ion-exchange column purified and shipped in a 2D barcoded Matrix tube containing 10ug of transfection-ready, dried plasmid DNA (reconstitute with 100 ul of water).
RefSeq:	NM_001283002.2
RefSeq Size:	2568 bp
RefSeq ORF:	1974 bp
Locus ID:	7692
Cytogenetics:	20p11.23
Protein Families:	Transcription Factors
MW:	74.2 kDa

Gene Summary: May be involved in transcriptional regulation as a repressor.[UniProtKB/Swiss-Prot Function]