

Product datasheet for **RG239205**

GGA3 (NM_001291641) Human Tagged ORF Clone

Product data:

Product Type:	Expression Plasmids
Product Name:	GGA3 (NM_001291641) Human Tagged ORF Clone
Tag:	TurboGFP
Symbol:	GGA3
Mammalian Cell Selection:	Neomycin
Vector:	pCMV6-AC-GFP (PS100010)
E. coli Selection:	Ampicillin (100 ug/mL)



[View online »](#)

ORF Nucleotide Sequence:

>RG239205 representing NM_001291641.
 Blue=ORF Red=Cloning site Green=Tag(s)

```

GCTCGTTTAGTGAACCGTCAGAATTTTGTAAACGACTCACTATAGGGCGGCCGGGAATTCGTGACTG
GATCCGGTACCGAGGAGATCTGCCGCCCGGATCGCC
ATGAAGAACTGTGGGAGGAGATTTCATAACGAAGTGGGAAGTCCGCTTTTTGAATGAGTTAATCAA
ATCGTCTCTCAAAGTACCTGGGGACAGGGTGTCTGAGAAAGTGAAGACCAAGTTATTGAGCTGCTG
TACAGCTGGACCATGGCCCTGCCAGAAGAAGCAAAGATCAAAGACGCCTACCACATGCTGAAGAGACAG
GGCATAGTGCAGTCTGACCCACCAATTCCTGTGGATAGGACGCTGATCCCTCTCCACCCTCGTCCC
AAAAACCTGTTTTGATGATGAGGAGAAGTCCAAGCTTTAGCCAAGCTGCTGAAAAGCAAAAACCA
GATGACCTGCAGGAGGCCAACAGCTCATCAAGTCCATGGTGAAGGAAGACGAGGCACGGATCCAGAAG
GTGACCAAGCGTCTGCACACGTTAGAGGAAGTTAAACAACAGTGAAGTCTGCTCAGTGAAGTCTGCTT
CATTACAGCCAGGAGGACTCTTCGGACGGGACAGAGAGCTGATGAAGGAGCTGTTTGTAGTGTGAG
AACAAGAGCGGACTTTATTTAACTCGCCAGTGAAGTGAAGTGAAGTGAAGTGAAGTGAAGTGAAGT
CTGCAAGCCAGTGAACCTCTCCGGGTCACTCAACTTTACAAAACAATTATTGAAGGGCAGGTCATC
AATGGCGAGGTGGCTACCTTAACCTGCCTGACTCGGAAGGAAACAGTCAAGTGAAGTGAAGTGAAGT
CTCATCGACCTTGCGGAGCTGGACACGACCAACAGTTTGTCTCCGTGTTGGCCCCAGCCTACTCCA
CCCTCCTCAGGCATCCCAATCCTCCCTCCACCACCCAGGCCTCAGGACCTCCACGGAGCCGCTCCTCT
AGCCAGGCCGAGGCCACCTGGGGCCAGCAGCACAAGCAACGCCTCTCCTGGCTGGACGAGGAGCTA
CTCTGCTTGGGCTCGCCGACCCAGCCCTAATGTTCTCCCAAAGAGTCAAGTGAAGTGAAGTGAAGT
CACCTGCTCCAGAGGGAACAGTCCGACCTGGACTTCTTCAGCCCCAGGCCGGGACCGCTGCCTGTGGC
GCCTCCGATGCTCCTCTGCTCCAGCCCTCAGCCCCCTCTCAAGCAGTCCCAAGCTCCACTGCCGCT
CCCTTCCAGCTCCTGTGGTCCCAGCCAGTGTTCCTGCCCCAGTGGGGCTCCTCCTTGTCTTCTACT
GGAGTGGCCCCAGCCTTGCCCCAAAAGTTGAGCCCGCAGTCCCTGGGCACCATGGCTTGGCGTTGGGC
AACAGCGCGCTGCACCACCTGGATGCCCTCGATCAGTCTTAGAAGAGGCCAAAGTGACCTCGGGCTTG
GTGAAACCCACTACCTCCCTCTCATCCCCACCACCACCCAGCCAGGCCCTCCTGCCCTTCTCCACG
GGGCCCGGACCCGCTCTTCCAGCCACTGAGTTTCCAGTCCCAGGGCAGCCCCCGAAGGGGCTGAG
CTCTCCCTGGCCAGCATCCACGTGCCCTGGAATCGATCAAGCCTAGCAGTGCCTTCTGTGACAGCC
TACGATAAAAACGGCTTCCGCATCCTCTTCCACTTTGCCAAGGAGTGTCCCCAGGACGACCTGACGTG
CTGGTGGTGGTGTCCATGCTGAACACGGCTCCCTTACCTGTCAAGAGCATCGTGTGACAGGCTGCA
GTGCCCAAGTCAATGAAAGTGAAGTTGCAGCCACCTTCTGGGACAGAAGTCTCTCCATTTAGCCCCATC
CAGCCACCTGCAGCCATACCCAGGTATGTTGCTGGCCAATCCACTGAAGGAGAAGGTGCGGCTTCGG
TATAAGCTGACCTTCGCCCTGGGGGAGCAGCTGAGCACAGAGGTGGGCGAGGTGGACCAGTTCCTCCT
GTGGAACAGTGGGGGAACCTA
ACGCGTACGCGGCCGCTCGAG - GFP Tag - GTTTAAAC
  
```

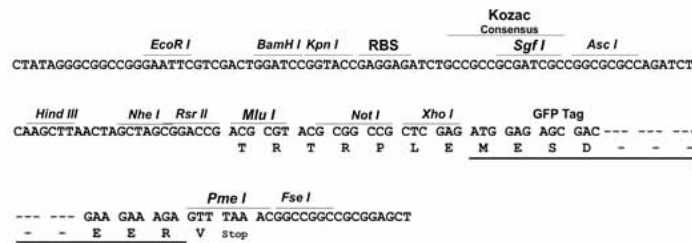
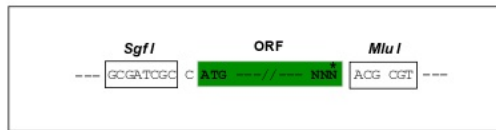
Protein Sequence: >Peptide sequence encoded by RG239205
 Blue=ORF Red=Cloning site Green=Tag(s)

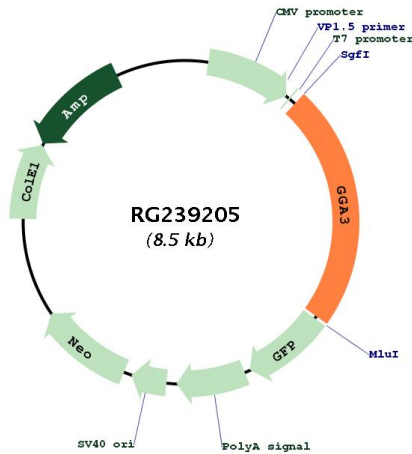
MKNCGRRFHNEVGKFRFLNELIKVVSPKYLGDRVSEKVKTKVIELLYSWTMALPEEAKIKDAYHMLKRQ
 GIVQSDPPPIPVDRTLIPSPPPRPKNPVFDDEEKSKLLAKLLKSKNPDDLQEANKLIKSMVKEDEARIQK
 VTKRLHTLEEVENNVRLLEMLLHYSQEDSSDGDRELMKELFDQCENKRRTLFKLASETEDNDNSLGDIL
 LQASDNL SRVINSYKTIIEGQVINGEVATLTLDPSEGNQCSNQGTLIDLAELDTTNSLSSVLPAPPTP
 PSSGIPILPPPPQASGPPRSRSSSQAEATLGPSSSTSNALSWLDEELLCLGLADPAPNVPPKESAGNSQW
 HLLQREQSDLDFSPRPGTAACGASDAPLLQPSAPSSSSSQAPLPPFPAPVVPASVPAPSAGSSLFST
 GVAPALAPKVEPAVPGHHGLALGNSALHHLDALDQLLEEAKVTSGLVKPTTSPLIPTTTTPARLLPFST
 GPGSPLFQPLSFQSQGSPKGPESLASHVPLESIKPSALPVTAYDKNGFRILFHFAKECPPGRPDV
 LVVVSMMLNTAPLPVKSIVLQAAVPKSMKVKLQPPSGTELSPFSPIQPPAAITQVMLLANPLKEKVRLR
 YKLTALGEQLSTEVEVDQFPVVEQWGNL
 TRTRPLEMESDESGLPAMEIECRITGTLNGVEFELVGGEGTPEQGRMTNKMKSTKGALTFSPYLLSHV
 MGYGFYHFGTYPSTYENPFLHAINNGGYTNRIEKYEDGGVLHVSFSYRYEAGRVIGDFKVMGTGFPED
 SVIFTDKIIRS NATVEHLHPMGDNDLDGSFTRTSLRDGGYSSVVD SHMHFKSAIHPSILQNGGPMFA
 FRRVEEDHSNTELGIVEYQHAFKTPDADAGEERV

Restriction Sites: SgfI-MluI

Cloning Scheme:

Cloning sites used for ORF Shuttling:



Plasmid Map:


ACCN: NM_001291641

ORF Size: 1953 bp

OTI Disclaimer: The molecular sequence of this clone aligns with the gene accession number as a point of reference only. However, individual transcript sequences of the same gene can differ through naturally occurring variations (e.g. polymorphisms), each with its own valid existence. This clone is substantially in agreement with the reference, but a complete review of all prevailing variants is recommended prior to use. [More info](#)

OTI Annotation: This clone was engineered to express the complete ORF with an expression tag. Expression varies depending on the nature of the gene.

Components: The ORF clone is ion-exchange column purified and shipped in a 2D barcoded Matrix tube containing 10ug of transfection-ready, dried plasmid DNA (reconstitute with 100 ul of water).

RefSeq: [NM_001291641.2](#)

RefSeq Size: 4118 bp

RefSeq ORF: 1956 bp

Locus ID: 23163

UniProt ID: [Q9NZ52](#)

Cytogenetics: 17q25.1

Protein Families: Druggable Genome

Protein Pathways: Lysosome

MW: 70.6 kDa

Gene Summary: This gene encodes a member of the Golgi-localized, gamma adaptin ear-containing, ARF-binding (GGA) family. This family includes ubiquitous coat proteins that regulate the trafficking of proteins between the trans-Golgi network and the lysosome. These proteins share an amino-terminal VHS domain which mediates sorting of the mannose 6-phosphate receptors at the trans-Golgi network. They also contain a carboxy-terminal region with homology to the ear domain of gamma-adaptins. Multiple alternatively spliced transcript variants have been identified in this gene. [provided by RefSeq, Feb 2010]