

## Product datasheet for **RG239118**

### Elastin (ELN) (NM\_001278918) Human Tagged ORF Clone

#### Product data:

Product Type:	Expression Plasmids
Product Name:	Elastin (ELN) (NM_001278918) Human Tagged ORF Clone
Tag:	TurboGFP
Symbol:	ELN
Synonyms:	ADCL1; SVAS; WBS; WS
Mammalian Cell Selection:	Neomycin
Vector:	pCMV6-AC-GFP (PS100010)
E. coli Selection:	Ampicillin (100 ug/mL)



[View online »](#)

**ORF Nucleotide Sequence:**

>RG239118 representing NM\_001278918.  
 Blue=ORF Red=Cloning site Green=Tag(s)

```

GCTCGTTAGTGAACCGTCAGAATTTTGAATACGACTCACTATAGGGCGGCCGGGAATTCGTGACTG
GATCCGGTACCGAGGAGATCTGCCGCCCGGATCGCC
ATGGCGGGTCTGACGGCGGGCGCCCGCGGCCGGAGTCCTCTGCTCCTGCTGCCATCCTCCACCCC
TCTCGGCTGGAGGGTCCCTGGGGCATTCTGGTGGAGTTCCCTGGAGGAGTCTTTATCCAGCGCTG
GGCCTGGAGGCAAACCTCTTAAGCCAGTTCCTGGAGGGCTTGGCGGTGCTGGCCTTGGGCAGGGCTC
GGCGCTTCCCCGAGTTACCTTTCGGGGGCTCTGGTGCCTGGTGGAGTGGCTGACGCTGCTGCAGCC
TATAAAGCTGCTAAGGCTGGCGCTGGGCTTGGTGGTGTCCAGGAGTTGGTGGCTTAGGAGTGTCTGCA
GGTGGCGTGGTTCCTCAGCCTGGAGCCGGAGTGAAGCCTGGGAAAGTGCCGGGTGTGGGGCTGCCAGGT
GTATACCCAGGTGGCGTCTCCAGGAGTTGGACCCTTTGGGGGACCGCAACCTGGAGTCCCACTGGGG
TATCCCATCAAGGCCCAAGCTGCCTGGTGGCTATGGACTGCCCTACACCACAGGGAACTGCCCTAT
GGCTATGGGCGCGAGGAGTGGTGGTGCAGCGGGCAAGGCTGGTACCCAACAGGGACAGGGGTGGC
CCCCAGGCAGCAGCAGCAGCGGCAGCTAAAGCAGCAGCAAAGTTCGGTGTGGAGCAGCCGAGTCTC
CCTGGTGTGGAGGGGCTGGTGTTCCTGGCGTGCCTGGGGCAATTCTGGAAATTGGAGGCATCGCAGGC
GTTGGGACTCCAGCTGCAGCTGCAGCTGCAGCAGCAGCCGCTAAGGCAGCCAAGTATGGAGCTGCTGCA
GGCTTAGTGCCTGGTGGGCCAGGCTTTGGCCCGGAGTAGTTGGTGTCCAGGAGCTGGCGTTCCAGGT
GTTGGTGTCCAGGAGCTGGGATTCAGTTGTCCAGGTGCTGGGATCCAGGTGCTGCGGTTCCAGGG
GTTGTGTACCAGAAGCAGCTGCTAAGGCAGCTGCAAAGGCAGCCAAATACGGGGCCAGGCCCGGAGTC
GGAGTTGGAGGCATTCTACTTACGGGGTTGGAGCTGGGGCTTCCCGGCTTGGTGTCCGAGTCGGA
GCCGAAGCTCAGCAGCAGCTGCCGCCAAGGCTGCCAAGTACGGGTTAGTTCCTGGTGTCCGCGTGGT
CCTGGATTGGCGTGGCTCCTGGTGTCCGTTGGCTCCTGGAGTTGGCTTGGCTCCTGGATTGGCGTG
GCTCCTGGAGTTGGTGTGGCTCCTGGCGTTGGCGTGGCTCCCGGATTGGCCCTGGTGGAGTTGCAGCT
GCAGCAAATCCGCTGCCAAGGTGGCTGCCAAGCCAGCTCCGAGCTGCAGCTGGGCTTGGTGTGGC
ATCCCTGGACTTGGAGTTGGTGTCCGCGTCCCTGGACTTGGAGTTGGTGTGGTGTCTGGACTTGGG
GTTGGTGTGGTGTCTGGCTTCCGGGCGAGTACCTGGAGCCCTGGCTGCCGCTAAAGCAGCCAAATAT
GGAGCAGCAGTGCCTGGGGTCTTGGAGGGCTCGGGCTCTCGGTGGAGTAGGCATCCAGGCGGTGTG
GTGGGAGCCGACCCGCCCGCCGCTGCCGAGCCAAAGCTGCTGCCAAGCCGCCAGTTGGCCTA
GTGGGAGCCGCTGGGCTCGGAGGACTCGGAGTCGGAGGGCTTGGAGTTCCAGGTGTGGGGCTTGGG
GGTATACCTCCAGCTGCAGCCGCTAAAGCAGCTAAATACGGAGTGGCAGCAAGACCTGGCTTCGGATTG
TCTCCATTTTCCAGGTGGGGCTGCCTGGGGAAAGCTTGTGGCCGGAAGAGAAAA
ACGCGTACGCGGCCGCTCGAG - GFP Tag - GTTTAAAC
  
```

**Protein Sequence:**

>Peptide sequence encoded by RG239118  
 Blue=ORF Red=Cloning site Green=Tag(s)

```

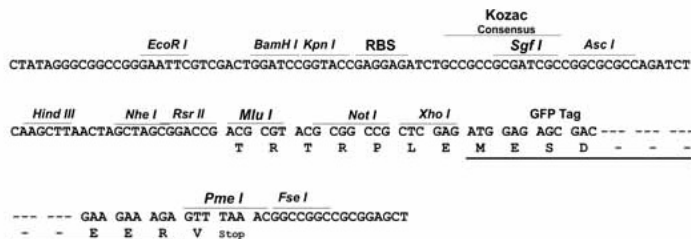
MAGLTAAPRPGVLLLLLSILHPSRPGVPGAIPGGVPGGVFYPALGPGGKPLKPVPGGLAGAGL
GAFPAVTFPGALVPGGVADAAAAKAAKAGAGLGGVPGVGLGVSAGAVVPQPGAGVKPGKVPVGLPG
VYPGGVLPVGPFGPQPGVPLGYPIKAPKLPGGYGLPYTTGKLPYGYGPGGVAGAAGKAGYPTGTG
PQAAAAAAKAAAFGAGAAGVLPVGGAGVPGVPGAIPGIGGIAGVGTAAAAAAKAAKYGAAA
GLVPGGPGFPGVVGVPAGVPGVPGAGIPVVPAGIPGAAVPGVVSPEAAKAAKAAKYGARPGV
GVGGIPTYGVGAGGFPFGVGVGAEQAQAAAAKAAKYGLVPGVGVAPGVGAPGVGAPVGLAPGVG
APGVGVAPGVGAPGIGPGGVAAAAKSAKVAQAQLRAAAGL GAGIPGLGVGVGVPGLVGVGAPGLG
VGAGVPGFAGVPGALAAKAAKYGAAPVGLGGLGALGGVIGPGVVGAGPAAAAAAKAAKAAQFGL
VGAAGLGLGVGGLVPGVVGGLGGIPAAAAKAAKYGVAARPGFGLSPIFPGGACLGKACGRKRK
TRTRPLEMESDESGLPAMEIECRITGTLNGVEFELVGGGEGTPEQGRMTNKMSTKGALTFSPYLLSHV
MGYGFYHFGTYPSTYENPFLHAINNGGYNTRIEKYEDGGVLHVSFSYRYEAGRVIGDFKVMGTGFPE
SVIFTDKIIIRSNATVEHLHPMGDNDLDGSFTRTFLSRDGGYSSVVDSHMHFKSAIHPSILQNGGPMFA
FRRVEEDHSNTELGIVEYQHAFKTPDADAGEERV
  
```

**Restriction Sites:**

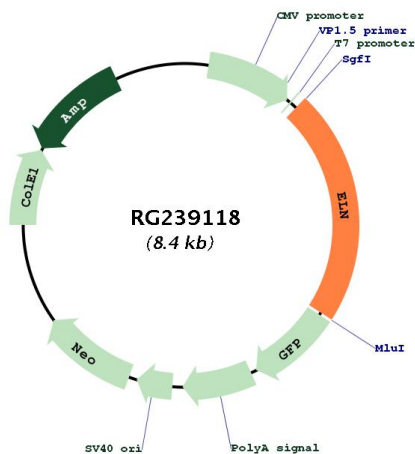
Sgfl-MluI

Cloning Scheme:

Cloning sites used for ORF Shutting:



Plasmid Map:



ACCN: NM\_001278918  
 ORF Size: 1851 bp

<b>OTI Disclaimer:</b>	The molecular sequence of this clone aligns with the gene accession number as a point of reference only. However, individual transcript sequences of the same gene can differ through naturally occurring variations (e.g. polymorphisms), each with its own valid existence. This clone is substantially in agreement with the reference, but a complete review of all prevailing variants is recommended prior to use. <a href="#">More info</a>
<b>OTI Annotation:</b>	This clone was engineered to express the complete ORF with an expression tag. Expression varies depending on the nature of the gene.
<b>Components:</b>	The ORF clone is ion-exchange column purified and shipped in a 2D barcoded Matrix tube containing 10ug of transfection-ready, dried plasmid DNA (reconstitute with 100 ul of water).
<b>RefSeq:</b>	<a href="#">NM_001278918.1</a> , <a href="#">NP_001265847.1</a>
<b>RefSeq Size:</b>	3468 bp
<b>RefSeq ORF:</b>	1854 bp
<b>Locus ID:</b>	2006
<b>Cytogenetics:</b>	7q11.23
<b>Protein Families:</b>	Druggable Genome, Secreted Protein, Transmembrane
<b>MW:</b>	54.1 kDa
<b>Gene Summary:</b>	This gene encodes a protein that is one of the two components of elastic fibers. Elastic fibers comprise part of the extracellular matrix and confer elasticity to organs and tissues including the heart, skin, lungs, ligaments, and blood vessels. The encoded protein is rich in hydrophobic amino acids such as glycine and proline, which form mobile hydrophobic regions bounded by crosslinks between lysine residues. Degradation products of the encoded protein, known as elastin-derived peptides or elastokines, bind the elastin receptor complex and other receptors and stimulate migration and proliferation of monocytes and skin fibroblasts. Elastokines can also contribute to cancer progression. Deletions and mutations in this gene are associated with supravalvular aortic stenosis (SVAS) and autosomal dominant cutis laxa. [provided by RefSeq, Aug 2017]