

Product datasheet for **RG238758**

GGT5 (NM_001302464) Human Tagged ORF Clone

Product data:

Product Type:	Expression Plasmids
Product Name:	GGT5 (NM_001302464) Human Tagged ORF Clone
Tag:	TurboGFP
Symbol:	GGT5
Synonyms:	GGL; GGT-REL; GGT 5; GGTLA1
Mammalian Cell Selection:	Neomycin
Vector:	pCMV6-AC-GFP (PS100010)
E. coli Selection:	Ampicillin (100 ug/mL)



[View online »](#)

ORF Nucleotide Sequence:

>RG238758 representing NM_001302464.
 Blue=ORF Red=Cloning site Green=Tag(s)

```

GCTCGTTTAGTGAACCGTCAGAATTTTGTAAACGACTCACTATAGGGCGGCCGGGAATTCGTGCGACTG
GATCCGGTACCGAGGAGATCTGCCGCCCGGATCGCC
ATGGCCCGGGGTACGGGGCCACGGTCAGCCTAGTCTGTGGTCTGGGGCTGGCGCTGGCTGTCAATT
GTGCTGGCTGTGGTCTCTCTCGACACCCAGCCCATGTGGCCCCAGGCCTTTGCCACGCTGCTGTT
GCCGCCGACTCCAAGGTCTGCTCGGATATTGGACGAGCCATCCTCCAGCAGCAGGGCTCACCCGTGGAT
GCCACCATCGCGGCTCTGGTCTGCACCAGCGTCTCAACCCTCAGAGCATGGGCCTGGGCGGAGGGGTC
ATCTTCACCATCTACAATGTGACAACAGGGGCCAGTGGATCGGGGTGCCCGGGGAGCTCCGTGGCTAT
GCCGAGGCCACCGCCGCATGGCCGCTGCCCTGGGCGCAGCTGTTCCAGCCCACCATCGCGCTGCTC
CGAGGGGGGATGTGGTGGCCCTGTCTCAGCCGTTTCTGCACAACAGCATCTGCGGCTTCTTTG
CAGGCGTCAACCCTGCGCAGCTCTTCTCAACGGGACAGAACCCTGAGGCCTCAGGACCCACTCCCA
TGGCCTGCACTGGCCACCACCTGGAGACCGTGGCCACAGAGGGCGTGGAGGTCTTACACGGGGAGG
CTGGGCCAGATGTGGTGGAGGACATTGCCAAGGAAGGGAGCCAGCTGACGCTGCAGGACCTGGCCAAG
TTCCAGCCCGAGGTGGTGGATGCCCTGGAGGTGCCCTGGGGGACTATACCTGTACTACCACCGCCG
CCTGCAGGGGGTCCATTCTCAGCTTTATCCTCAACGTGCTAAGAGGGTTCAACTTCTCAACAGAGTCT
ATGGCCAGGCCTGAAGGGAGGGTGAACGTGTACCACCACCTTGTAGAGACGCTCAAGTTTGCAAGGGG
CAGAGGTGGAGGCTGGGGGACCCCTGAAGCCACCCGAAGCTCCAGAATGCCTCCCGGGACCTGCTGGGG
GAGACCTGGCCAGCTCATCCGCCAACAGATCGATGGCCGGGGGACCACCAGCTCAGCCACTACAGC
TTGGCCGAGGCCTGGGGCCACGGGACAGGACAGTCCCATGTGTCTGTGCTGGGGGAGGATGGCAGCGCC
GTGGCTGCCACCAGCACCATCAACACACCTTTGGAGCGATGGTGTATTACACCGGACAGGCATCATC
TCAACAACAGAGCTCCTGGACTTATGCGAGCGATGCCCCGGGGTTCGGCCACCACCCCTCACCTGTG
AGTGGAGACAGGGTGGGTGGAGCTCCCGAAGGTGCTGGCCCCAGTTCAGGCGAGCGTTCCTCCATCC
TCCATGGTGCCTCCATCTTGATCAACAAGCCAGGGTCAAGCTAGTGATTGCGGGGCTGGCGGG
GAGCTCATCATCTCTGCTGTGGCCAGGCCATCATGAGCAAGCTGTGGCTTGGCTTTGACCTGAGAGCG
GCCATTGAGCCCCATCCTGCATGTCAACAGCAAGGGCTGTGTGGAGTACGAGCCCACTCAGCCAG
AGACGGTGTCTTGTCTTGTGCCTGGCTGTTCTCAAACCTCCTGGCCTCAAGTGATCCTGCCACCTGG
CTCCCAAGTGGC
ACGCGTACGCGGCCGCTCGAG - GFP Tag - GTTAAAC
  
```

Protein Sequence:

>Peptide sequence encoded by RG238758
 Blue=ORF Red=Cloning site Green=Tag(s)

```

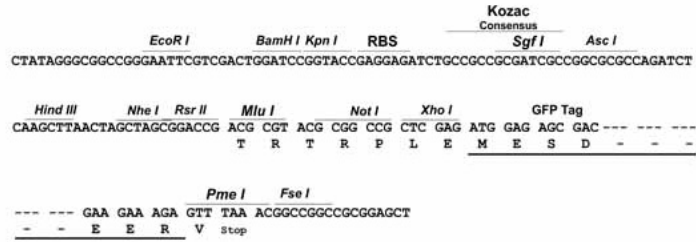
MARGYGATVSLVLLGLGLALAVIVLAVVLSRHQAPCGPQAFAHAAVAADSKVCSDIGRAILQQGSPVD
ATIAALVCTSVVNPQSMGLGGVIFTIYNVTTGAQWIGVPGELRGYAEHRRHRGLPWAQLFQPTIALL
RGGHVAVPVLSRFLHNSILRPSLQASTLRQLFFNGTEPLRPQDPLPWPALATTLTETVATEGVEVFTGR
LGQMLVEDIAKEGSQLTLDLAKFQPEVVDALVPLGDYTLSPPPPAGGAILSFILNVLRFNFSTES
MARPEGRVNVYHHLVETLKFAGQQRWRLGDRSHPKLQNASRDLLGETLAQLIRQQIDGRGDHQLSHYS
LAEAWGHGTGSHVSVLGEDGSAVAATSTINTPFAMVYSPRTGIILNNEILLDLERCPRGSGTTPSPV
SGDRVGGAPGRCWPPVPGERSPSSMVP SILINKAQGSKLVIGGAGGELIISAVAQAIMSKLWLFDLRA
AIAAPILHVNSKGCVEYEPNFSQRRCLALLPWLFSNSWPQVILPPWLPSG
TRTRPLEMESDESGLPAMEIECRITGTLNGVEFELVGGEGTPEQGRMTNKMSTKGALTFSPYLLSHV
MGYGFYHFTYPSGYENPFLHAINNGGYNTRIEKYEDGGVLHVSFSYRYEAGRVIGDFKVMGTGFPED
SVIFTDKIIRSNATVEHLHPMGDNDLDGSFTRTFLRDGGYSSVVD SHMHFKSAIHPSILQNGGPMFA
FRRVEEDHSNTELGIVEYQHAFKTPDADAGEERV
  
```

Restriction Sites:

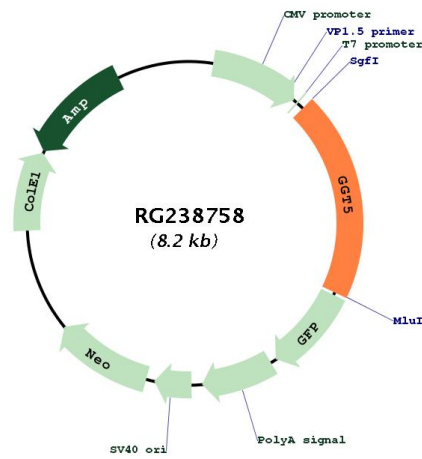
Sgfl-MluI

Cloning Scheme:

Cloning sites used for ORF Shutting:



Plasmid Map:



ACCN:	NM_001302464
ORF Size:	1599 bp
OTI Disclaimer:	The molecular sequence of this clone aligns with the gene accession number as a point of reference only. However, individual transcript sequences of the same gene can differ through naturally occurring variations (e.g. polymorphisms), each with its own valid existence. This clone is substantially in agreement with the reference, but a complete review of all prevailing variants is recommended prior to use. More info
OTI Annotation:	This clone was engineered to express the complete ORF with an expression tag. Expression varies depending on the nature of the gene.
Components:	The ORF clone is ion-exchange column purified and shipped in a 2D barcoded Matrix tube containing 10ug of transfection-ready, dried plasmid DNA (reconstitute with 100 ul of water).
RefSeq:	NM_001302464.1 , NP_001289393.1
RefSeq Size:	2507 bp
RefSeq ORF:	1602 bp
Locus ID:	2687
UniProt ID:	P36269
Cytogenetics:	22q11.23
Protein Families:	Protease, Transmembrane
Protein Pathways:	Arachidonic acid metabolism, Cyanoamino acid metabolism, Glutathione metabolism, Metabolic pathways, Selenoamino acid metabolism, Taurine and hypotaurine metabolism
MW:	57.3 kDa
Gene Summary:	This gene is a member of the gamma-glutamyl transpeptidase gene family, and some reports indicate that it is capable of cleaving the gamma-glutamyl moiety of glutathione. The protein encoded by this gene is synthesized as a single, catalytically-inactive polypeptide, that is processed post-transcriptionally to form a heavy and light subunit, with the catalytic activity contained within the small subunit. The encoded enzyme is able to convert leukotriene C4 to leukotriene D4, but appears to have distinct substrate specificity compared to gamma-glutamyl transpeptidase. Alternative splicing results in multiple transcript variants encoding different isoforms. [provided by RefSeq, Oct 2014]