

Product datasheet for **RG238710**

GPR56 (ADGRG1) (NM_001290142) Human Tagged ORF Clone

Product data:

Product Type:	Expression Plasmids
Product Name:	GPR56 (ADGRG1) (NM_001290142) Human Tagged ORF Clone
Tag:	TurboGFP
Symbol:	ADGRG1
Synonyms:	BFPP; BPPR; GPR56; TM7LN4; TM7XN1
Mammalian Cell Selection:	Neomycin
Vector:	pCMV6-AC-GFP (PS100010)
E. coli Selection:	Ampicillin (100 ug/mL)



[View online »](#)

ORF Nucleotide Sequence:

>RG238710 representing NM_001290142.
 Blue=ORF Red=Cloning site Green=Tag(s)

```
GCTCGTTTAGTGAACCGTCAGAATTTTGTAAACGACTCACTATAGGGCGGCCGGGAATTCGTGCGACTG
GATCCGGTACCGAGGAGATCTGCCGCCCGCATCGCC
ATGACTCCCCAGTCGCTGCTGCAGACGACTGTTCTGCTGAGTCTGCTCTTCTGGTCCAAGGTGCC
CACGGCAGGGGCCACAGGAAGACTTTCGCTTCTGCAGCCAGCAGTTGCAGAGCCTGGAGTCGAACTG
ACCTCTGTGAGATTATGGGGGACATGGTGTCTTCGAGGAGGACCGGATCAACGCCACGGTGTGGAAG
CTCCAGCCACAGCCGGCCTCCAGGACCTGCACATCCACTCCCGCAGGAGGAGGAGCAGAGCGAGATC
ATGGAGTACTCGGTGCTGCTGCCTCGAACACTCTCCAGAGGACGAAAGGCCGGAGCGGGGAGGCTGAG
AAGAGACTCCTCCTGGTGGACTTCAGCAGCCAAGCCCTGTTCCAGGACAAGAATCCAGCCAAGTCTG
GGTGAGAAGGTCTTGGGATTGTGGTACAGAACACAAAGTAGCCAACCTCACGGAGCCCGTGGTGTCTC
ACTTCCAGCACCAGCTACAGCCGAAGAATGTGACTCTGCAATGTGTGTTCTGGGTTGAAGACCCACA
TTGAGCAGCCCGGGCATTGGAGCAGTGTGGGTGTGAGACCGTCAGGAGAGAAACCCAAACATCCTGC
TTCTGCAACCACTTGACCTACTTTCAGTGTGATGGTCTCCTCGGTGGAGGTGGACGCCGTGCACAAG
CACTACCTGAGCCTCCTCCTACGTGGGCTGTGTGCTCTGCCCTGGCCTGCCTGTCAACATTGCC
GCCTACCTCTGCTCCAGGTGCCCTGCCGTGCAGGAGGAAACCTCGGGACTACACCATCAAGGTGCAC
ATGAACCTGCTGCTGGCCGTCTTCTGCTGGACACGAGCTTCTGCTCAGCGAGCCGGTGGCCCTGACA
GGCTCTGAGGCTGGTGGCAGCCAGTGCATCTTCTGCACTTCTCCCTGCTCACCTGCCTTCTCTGG
ATGGGCCCTCGAGGGGTACAACCTTACCAGCTCGTGGTGGAGGTCTTGGCACCTATGTCCTGGCTAC
CTACTCAAGCTGAGGCCATGGGCTGGGCTTCCCATCTTCTGGTACGCTGGTGGCCCTGGTGGAT
GTGGACAACATGGCCCCATCATCTTGGCTGTGCATAGGACTCCAGAGGGCGTCATCTACCTTCCATG
TGCTGGATCCGGGACTCCCTGGTCACTACACCAACCTGGGCTCTTCCAGCCTGGTGTCTTCTGTTT
AACATGGCCATGCTAGCCACCATGGTGGTGCAGATCCTGCGGCTGCGCCCCACACCCAAAAGTGGTCA
CATGTGCTGACTGCTGGGCTCAGCCTGGTCTTGGCCTGCCCTGGGCTTGTCTTCTCTCTCTT
GCTTCTGGCACCTCCAGCTTGTGCTCCTACCTTTTCCAGCATCATCACCTCCTCCAAGGCTTCTC
ATCTTCTGCTGACTGGTCCATGCGGCTGCAGGCCCGGGTGGCCCTCCCTCTGAAGAGCAACTCA
GACAGCGCCAGGCTCCCATCAGCTCGGGCAGCACCTCGTCCAGCCGCATC
ACGCGTACGCGGCCGCTCGAG – GFP Tag – GTTAAAC
```

Protein Sequence:

>Peptide sequence encoded by RG238710
 Blue=ORF Red=Cloning site Green=Tag(s)

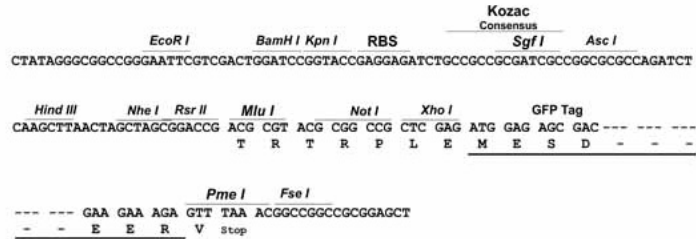
```
MTPQSLQLTTLFLLSLLFLVQGAHGRGHREDFRCSQQLQSLESKLTSVRFMGDMVSFEEDRINATVWK
LQPTAGLQDLHIHSRQEEEQSEIMEYSVLLPRTLFRQTKGRSGEAEKRLLLVDFSSQALFQDKNSSQVL
GEKVLGI VVQNTKVANL TEPVVLTFQHQLQPKNVTLCQVFWVEDPTLSSPGHWSSAGCETVRRETQTS
FCNHLTYFAVLMVSSVEVDAVHKHYLSLLSYGCVVSALACLVTIAAYLCSRVLPCRPRDYTIKVVH
MNL LLA VFLDTSFLLSEPVALTGSEAGCRASAI FLHF SLLTCLSWMGLEGYNLYRLVVEVFGTYVPGY
LLKLSAMGWGFP IFLVTLVALVDVDNYGPIILAVHRTPEGVIYPSMCWIRDSLVS YITNLGLFSLVFLF
NMAMLATMVVQILRLRPHTQKWSHVL TLLGLSLVGLPWALIFFSFASGTFQLVVLVLF SIITSFQGL
FIWIWMSMLQARGGPSPLKSNDSARLPISSGSTSSRI
TRTRPLEMESDESGLPAMEIECRITGTLNGVEFELVGGEGTPEQGRMTNKMSTKGALTFSPYLLSHV
MGYGFYHFGTYPSGYENPFLHAINNGYNTRIEKYEDGGVLHVSFSYRYEAGRVIGDFKVMGTGFPED
SVIFTDKIIRSNATVEHLHPMGDNDLDGSFTRTFLRDGGYSSVVD SHMHFKSAIHPSILQNGGPMFA
FRRVEEDHSNTELGIVEYQHAFKTPDADAGEERV
```

Restriction Sites:

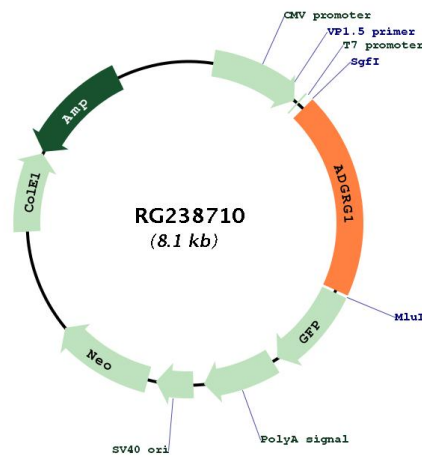
Sgfl-Mlul

Cloning Scheme:

Cloning sites used for ORF Shutting:



Plasmid Map:



ACCN:	NM_001290142
ORF Size:	1569 bp
OTI Disclaimer:	The molecular sequence of this clone aligns with the gene accession number as a point of reference only. However, individual transcript sequences of the same gene can differ through naturally occurring variations (e.g. polymorphisms), each with its own valid existence. This clone is substantially in agreement with the reference, but a complete review of all prevailing variants is recommended prior to use. More info
OTI Annotation:	This clone was engineered to express the complete ORF with an expression tag. Expression varies depending on the nature of the gene.
Components:	The ORF clone is ion-exchange column purified and shipped in a 2D barcoded Matrix tube containing 10ug of transfection-ready, dried plasmid DNA (reconstitute with 100 ul of water).
RefSeq:	NM_001290142.2
RefSeq Size:	3371 bp
RefSeq ORF:	1572 bp
Locus ID:	9289
UniProt ID:	Q9Y653
Cytogenetics:	16q21
Protein Families:	Druggable Genome, GPCR, Transmembrane
MW:	59.1 kDa
Gene Summary:	This gene encodes a member of the G protein-coupled receptor family and regulates brain cortical patterning. The encoded protein binds specifically to transglutaminase 2, a component of tissue and tumor stroma implicated as an inhibitor of tumor progression. Mutations in this gene are associated with a brain malformation known as bilateral frontoparietal polymicrogyria. Alternative splicing results in multiple transcript variants. [provided by RefSeq, Feb 2014]