

Product datasheet for **RG238622**

FRS2 (NM_001278355) Human Tagged ORF Clone

Product data:

Product Type:	Expression Plasmids
Product Name:	FRS2 (NM_001278355) Human Tagged ORF Clone
Tag:	TurboGFP
Symbol:	FRS2
Synonyms:	FRS1A; FRS2A; FRS2alpha; SNT; SNT-1; SNT1
Mammalian Cell Selection:	Neomycin
Vector:	pCMV6-AC-GFP (PS100010)
E. coli Selection:	Ampicillin (100 ug/mL)



[View online »](#)

ORF Nucleotide Sequence:

>RG238622 representing NM_001278355.
 Blue=ORF Red=Cloning site Green=Tag(s)

```
GCTCGTTAGTGAACCGTCAGAATTTTGTAAACGACTCACTATAGGGCGGCCGGGAATTCGTGCGACTG
GATCCGGTACCGAGGAGATCTGCCGCCCGCATCGCC
ATGGGTAGCTGTTGTAGCTGTCCAGATAAAGACACTGTCCAGATAACCATCGGAACAAGTTTAAGGTC
ATTAATGTGGATGATGATGGGAATGAGTTAGGTTCTGGCATAATGGAACCTACAGACACAGAAGTATT
TTATACACCCGCAAACGTGACTCAGTAAAATGGCACTACCTCTGCCTGCGACGCTATGGCTATGACTCG
AATCTCTTTTCTTTTGAAGGTGTCGAAGGTGTCAAACCTGGACAAGGAATCTTTGCCTTTAAGTGTGCC
CGTGCAGAAGAATTATTTAACATGTTGCAAGAGATTATGCAAAAATAAGTATAAATGTGGTGGAAGAG
CCAGTTGTAGAAAAGAAATAATCATCAGACAGAATTGGAAGTCCCTAGAACACCTCGAACACCTACAAC
CCAGGATTTGCTGCTCAGAACTTACCTAATGGATATCCCCGATATCCCTCATTTGGAGATGCTTCATCC
CATCCGTC AAGCAGACATCCTTCTGTGGGAAGTCTCGCCTGCCTTCAGTAGGGGAAGAATCTACACAT
CCTTTGCTTTGGCTGAGGAACAAGTACATACCTATGTCAACACTACAGGTGTGCAAGAAGAGCGGAAA
AACCGCACAAGTGTGCATGTTCCATTGGAGGCAAGGGTTTCTAACGCTGAAAGCAGCACACCAAAAAGAA
GAACCAAGTAGTATTGAGGACAGGGATCCCTCAGATTCTTCTTGAACCTGAAGGAGTCAAATTTGTTTTA
GGGCCAACCCCTGTTCAAAGCAGTTAATGGAAAAAGAGAAACTGGAGCAACTTGGGAAGAGATCAAGTT
AGTGGAAGTGGAGCAAATAACACAGAATGGGACACTGGCTATGACAGTGTGAACGAAGAGATGCACCC
TCTGTTAAACAACTGGTGTATGAAAATATAAATGGGCTATCTATCCCTAGTGCCTCAGGGGTGAGGAGA
GGTCGCTGACATCCACCAGTACCTCAGATACCAGAATATCAACAACTCAGCTCAGAGAAGAAGTGCAT
TTATTAACACTATGAAAATCTACCATCTTTGCCTCCTGTTGGGAAGCCCGCAAGCTAAGTAGGGATGAA
GATGACAAATTAGGACCAAAGACCCCATCTCTAAATGGCTACCATAATAATCTAGATCCAATGCATAAC
TATGTAATAACAGAGAATGTAACAGTGCAGCAAGTGTCAAAAAAGAATATTC AAGGGCTCGGGAC
TGTAACCAACAGTCTTTAACTTTGATATCAGACGCCCAAGTTTAGAACACAGGCAGCTTAATTACATA
CAGGTTGACTTGGGAAGGTGGCAGTACTCTGACAAACCCTCAGACTCCAAAAACGCCTACAACCTCCCTT
CCACAAACCCCTACCAGGCGCACAGAGCTGTATGCCGTGATAGACATCGAGAGAAGTCTGCTATGTCA
AATTTGCAGAAAGCACTGCCACGAGATGATGGTACATCTAGGAAAAGTACACACAATAGTACTGATCTG
CCCATGTTAGCCTGAAA
ACGCGTACGCGGCCGCTCGAG – GFP Tag – GTTAAAC
```

Protein Sequence:

>Peptide sequence encoded by RG238622
 Blue=ORF Red=Cloning site Green=Tag(s)

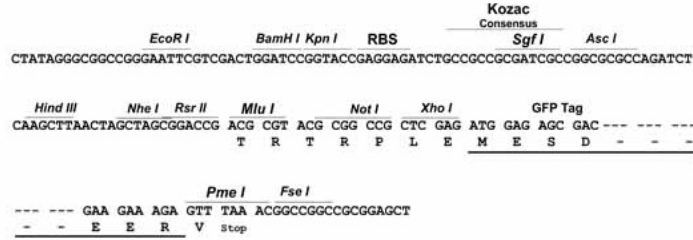
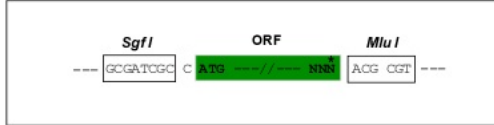
```
MGSCCSPDKDTPVDNHRNFKVINVDDDGNELGSGIMELTDELILYTRKRDSVKWHYLCLRRYGYDS
NLF SFGRRRCQTGGQIFAFKCARAEELFNMLQEIMQNNNSINVVEEPVVERNHHQTELEVPRTPRPTT
PGFAAQNL PNGYPRYP SFGDASSHPSSRHPSVGSARLPSVGEESTHPLLVAEEQVHTYVNTTGVQEERK
NRTSVHVPLEARVSNAESSTPKPEPSSIEDRDPQILLEPEGVKFLVLPVQKQLEMEKELEQLGRDQV
SGSGANTEWDTGYDSDERRDAPSVNKL VYENINGLSIPSASGVRGRRLTSTSTSDTQINNSAQRRTA
LLNYENLPSLPPVWEARKL SRDEDDNLGPKTPSLNGYHNNLDPMHNYVNTENVTPASAHKIEYSRRRD
CTPTVFNFDIRRRSLEHRQLNYIQVDLEGGSDSNPQTPKPTTPLPQTPTRTELYAVIDIERTAAMS
NLQKALPRDDGTSRKTRHNSTDLPLAWK
TRTRPLEMESDESGLPAMEIECRITGTLNGVEFELVGGEGTPEQGRMTNKMSTKGALTFSPYLLSHV
MGYGFYHFGTYPSGYENPFLHAINNGGYNTRIEKYEDGGVLHVSFSYRYEAGRVIGDFKVMGTGFPED
SVIFTDKIIRSNATVEHLHPMGDNDLDGSFTRTFLRDGGYSSVVD SHMHFKSAIHPSILQNGGPMFA
FRRVEEDHSNTELGIVEYQHAFKTPDADAGEERV
```

Restriction Sites:

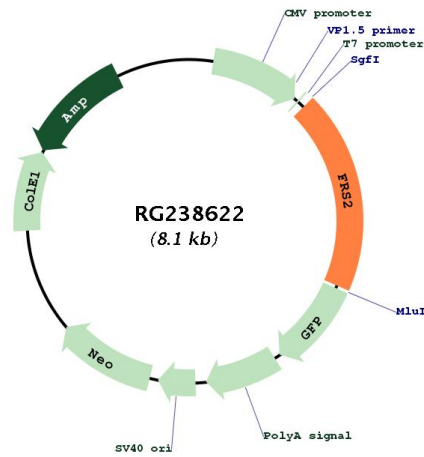
Sgfl-Mlul

Cloning Scheme:

Cloning sites used for ORF Shutting:



Plasmid Map:



ACCN:	NM_001278355
ORF Size:	1536 bp
OTI Disclaimer:	The molecular sequence of this clone aligns with the gene accession number as a point of reference only. However, individual transcript sequences of the same gene can differ through naturally occurring variations (e.g. polymorphisms), each with its own valid existence. This clone is substantially in agreement with the reference, but a complete review of all prevailing variants is recommended prior to use. More info
OTI Annotation:	This clone was engineered to express the complete ORF with an expression tag. Expression varies depending on the nature of the gene.
Components:	The ORF clone is ion-exchange column purified and shipped in a 2D barcoded Matrix tube containing 10ug of transfection-ready, dried plasmid DNA (reconstitute with 100 ul of water).
RefSeq:	NM_001278355.1 , NP_001265284.1
RefSeq Size:	6911 bp
RefSeq ORF:	1527 bp
Locus ID:	10818
UniProt ID:	Q8WU20
Cytogenetics:	12q15
Protein Families:	Druggable Genome
Protein Pathways:	Neurotrophin signaling pathway
MW:	57.5 kDa
Gene Summary:	Adapter protein that links activated FGR and NGF receptors to downstream signaling pathways. Plays an important role in the activation of MAP kinases and in the phosphorylation of PIK3R1, the regulatory subunit of phosphatidylinositol 3-kinase, in response to ligand-mediated activation of FGFR1. Modulates signaling via SHC1 by competing for a common binding site on NTRK1.[UniProtKB/Swiss-Prot Function]