

## Product datasheet for **RG238484**

### Chimaerin 2 (CHN2) (NM\_001293070) Human Tagged ORF Clone

#### Product data:

Product Type:	Expression Plasmids
Product Name:	Chimaerin 2 (CHN2) (NM_001293070) Human Tagged ORF Clone
Tag:	TurboGFP
Symbol:	CHN2
Synonyms:	ARHGAP3; BCH; CHN2-3; RHOGAP3
Mammalian Cell Selection:	Neomycin
Vector:	pCMV6-AC-GFP (PS100010)
E. coli Selection:	Ampicillin (100 ug/mL)
ORF Nucleotide Sequence:	>RG238484 representing NM_001293070. Blue=ORF Red=Cloning site Green=Tag(s)

```
GCTCGTTTGTAGTGAACCGTCAGAATTTTGTAAACGACTCACTATAGGGCGGCCGGGAATTCGTCGACTG
GATCCGGTACCGAGGAGATCTGCCGCCCGGATCGCC
ATGGCAGCGTCCAGCAACTCCAGCCTGTCCGGCTCGTCGGTGTCCCTCCGCTATTCTGAACCCAGAAGC
CCGAGAGAGCTTCCAAAATATGCTGAAGAATACCAGCCTCCTATATGAAATCATACTTATATCAGTTA
CAGCAAGAGGCACCTCGTCCAAGAGAATCATTGTCTCGGGAGGTGAAAACAGACCAAAATATTAT
GGAAGAGAGTTTCATGGGATCATCTCTCGGGAGCAGGCCGATGAGCTTCTGGAGCGTGGAGGGTGCC
TACATCCTTAGAGAAAAGCCAGCGCAACCAGGATGCTACACGCTGGCTCTCAGGTTTGGAAACCAGACC
TTAAACTACAGGCTCTCCACGACGGGAAACACTTTGTGGGTGAGAAGAGGTTTGAGTCGATTCATGAT
CTGGTGACAGATGGCTTGATAACTGTACATAGAAAACAAAAGCTGCCGAGTACATTTCAAAAATGACA
ACTAACCCCATCTATGAACACATTGGATATGCCACCCTACTCAGAGAAAAAGTATCCAGAAGGCTGAGC
AGGTCTAAAAATGAACCAAGAAAAACAAACGTCACACATGAAGAACACACAGCGGTGAAAAAGATCTCC
TCCCTGGTTCGAAGGGCTGCCCTCACACACAACGACAACCACTTCAATTATGAGAAGACACACAACCTT
AAGGTCCACACGTTCCGAGGCCACACTGGTGTGAATATTGTGCCAATTCATGTGGGGCTCATCGCC
CAAGGGTCCGGTGCTCAGACTGTGGATTGAACGTACACAAACAGTGTCCAAGCACGTTCCCAATGAC
TGCCAACCTGATCTCAAGAGGATCAAGAAAGTACTGTTGTGACCTCACAAACACTGTGAAGGCTCAC
AACACTCAGAGACCCATGGTGGTAGACATATGCATTCGGGAAATTAAGCAAGAGGATTAATAATCGGAA
GGCCTTTACAGAGTCTCTGGTTCACTGAACACATTGAAGATGTCAAAATGGCATTGACAGAGATGGT
GAAAAGGCCGATATATCTGCCAATGTCTATCCAGACATAAACATCATCACTGGAGCCCTTAACTGTAT
TTCAGAGACTTACCCATCCCTGTCATCACATATGATACCTATTCCAAATTTATAGATGCAGCAAAAATC
TCCAATGCAGATGAGAGGCTGGAAGCCGTCATGAAGTGCTGATGCTGCTGCCTCCTGCCACTATGAA
ACCCTCCGGTACCTAATGATCCACCTCAAAAAGGTTACTATGAATGAAAAAGACAATTTTCATGAATGCA
GAAAATCTGGGATCGTGTGGGCCACTCTGATGAGGCCCTGAGGACAGCACCTGACCACCCTG
CATGATATGCGGTACCAAAAGCTGATTGTGCAGATTTTAAATAGAAAACGAAGACGTTTTTATTC
ACGCGTACGCGGCCGCTCGAG - GFP Tag - GTTTAAAC
```



[View online »](#)

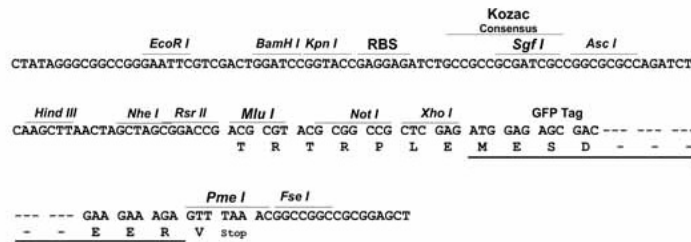
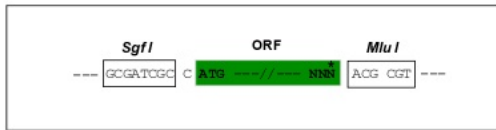
Protein Sequence: >Peptide sequence encoded by RG238484  
 Blue=ORF Red=Cloning site Green=Tag(s)

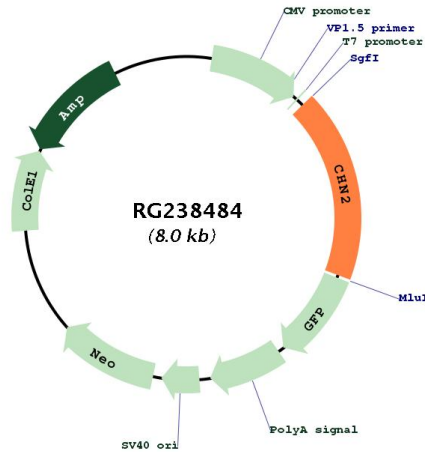
MAASSNSSLGSSVSSVYSEPRSPRELPKYAEYQPPIWKSPLYQLQEQEAPRPKRIICPREVENRPKY  
 GREFHGIISREQADELLGGVEGAYILRESQRQPGCYTLALRFGNQTLNYRLFHDGKHFVGEKRFESI  
 LVTDLITLYIETKAAEYISKMTTNPIYEHIGYATLLREKVSRRLSRSKNEPRKTNVTHEEHTAVEKIS  
 SLVRRALTHNDNHFNYEKTTHNFVHTFRGPHWCEYCANFMWGLIAQGVRCSDCGLNVHKQCSKHVPND  
 CQPDLKRIKKVYCCDLTTLVKAHNTQRPMVVDICIREIEARGLKSEGLYRVSGFTEHIEDVKMAFDRDG  
 EKADISANVYPDINIITGALKLYFRDLPIPVTYDTYSKFIDAAKISNADERLEAVHEVLMMLPPAHYE  
 TLRYLMIHLKVTMNEKDNFMNAENLGI VFGPTLMRPPEDSTLTTLHDMRYQKLI VQIL IENEDVLF  
**TRTRPLEMESDESGLPAMEIECRITGTLNGVEFELVGGGEGTPEQGRMTNKMSTKGALTFSPYLLSHV**  
 MGYGFYHFGTYPSGYENPFLHAINNGGYNTRIEKYEDGGVLHVSFSYRYEAGRVIGDFKVMGTGFPED  
 SVIFTDKIIRSNATVEHLHPMGDNDLDGSFTRTFLRDGGYSSVVD SHMHFKSAIHPSILQNGGPMFA  
 FRRVEEDHSNTELGIVEYQHAFKTPDADAGEERV

Restriction Sites: SgfI-MluI

Cloning Scheme:

Cloning sites used for ORF Shutting:



**Plasmid Map:**


**ACCN:** NM\_001293070

**ORF Size:** 1443 bp

**OTI Disclaimer:** The molecular sequence of this clone aligns with the gene accession number as a point of reference only. However, individual transcript sequences of the same gene can differ through naturally occurring variations (e.g. polymorphisms), each with its own valid existence. This clone is substantially in agreement with the reference, but a complete review of all prevailing variants is recommended prior to use. [More info](#)

**OTI Annotation:** This clone was engineered to express the complete ORF with an expression tag. Expression varies depending on the nature of the gene.

**Components:** The ORF clone is ion-exchange column purified and shipped in a 2D barcoded Matrix tube containing 10ug of transfection-ready, dried plasmid DNA (reconstitute with 100 ul of water).

**RefSeq:** [NM\\_001293070.1](#), [NP\\_001279999.1](#)

**RefSeq Size:** 3500 bp

**RefSeq ORF:** 1446 bp

**Locus ID:** 1124

**UniProt ID:** [P52757](#)

**Cytogenetics:** 7p14.3

**MW:** 56 kDa

**Gene Summary:**

This gene encodes a guanosine triphosphate (GTP)-metabolizing protein that contains a phorbol-ester/diacylglycerol (DAG)-type zinc finger, a Rho-GAP domain, and an SH2 domain. The encoded protein translocates from the cytosol to the Golgi apparatus membrane upon binding by diacylglycerol (DAG). Activity of this protein is important in cell proliferation and migration, and expression changes in this gene have been detected in cancers. A mutation in this gene has also been associated with schizophrenia in men. Alternative transcript splicing and the use of alternative promoters results in multiple transcript variants. [provided by RefSeq, May 2014]