

Product datasheet for **RG238401**

ST6GALNAC1 (NM_001289107) Human Tagged ORF Clone

Product data:

Product Type:	Expression Plasmids
Product Name:	ST6GALNAC1 (NM_001289107) Human Tagged ORF Clone
Tag:	TurboGFP
Symbol:	ST6GALNAC1
Synonyms:	HSY11339; SIAT7A; ST6GalNAcI; STYI
Mammalian Cell Selection:	Neomycin
Vector:	pCMV6-AC-GFP (PS100010)
E. coli Selection:	Ampicillin (100 ug/mL)
ORF Nucleotide Sequence:	>RG238401 representing NM_001289107. Blue=ORF Red=Cloning site Green=Tag(s)

```
GCTCGTTTGTGAAACCGTCAGAATTTGTAAACGACTACTATAGGGCGCCGGGAATTCGTCGACTG
GATCCGGTACCGAGGAGATCTGCCGCCGCGATCGCC
ATGGTGAACACTGTCACCCAGAGGGCAAGATGCAGGGATGGCCTCTGGCAGGACAGAGGCACAATCA
TGGAAAGAGCCAGGACACAAAGACGACCAAGGAAATGGGGCCAGACCAGGAAGCTGACGGCCTCCAGG
ACGGTGTGAGAGAAGCACCAGGGCAAAGCGGCAACCACAGCCAAGACGCTATTCACAAAAGTCAGCAC
AGAATGCTGGCTCCACAGGAGCAGTGTCAACAAGGACGAGACAGAAAGGAGTGACCACAGCAGTCATC
CCACCTAAGGAGAAGAACTCAGGCCACCCACCCCTGCCCTTTCCAGAGCCCCACGACGCAGAGA
AACCAAAGACTGAAGGCCCAACTTCAAATCTGAGCCTCGGTGGGATTTGAGGAAAAATACAGCTTC
GAAATAGGAGGCCTTCAGACGACTTGCCCTGACTCTGTGAAGATCAAAGCCTCCAAGTCGCTGTGGCTC
CAGAAACTCTTTCTGCCAACCTCACTCTCTTCTGGACTCCAGACACTTCAACCAGAGTGAGTGGGAC
CGCCTGGAACACTTTGCACCACCCTTTGGCTTCATGGAGCTCAACTACTCCTTGGTGAGAAAGTTCGTG
ACACGCTTCCCTCCAGTGCCCGCAGCAGCTGCTCCTGGCCAGCCTCCCGCTGGGAGCCTCCGGTGC
ATCACCTGTGCCGTGGTGGGCAACGGGGCATCCTGAACAACCCACATGGGCCAGGAGATAGACAGT
CACGACTACGTGTTCCGATTGAGCGGAGCTCTCATTAAAGGCTACGAACAGGATGTGGGGACTCGGACA
TCCTTCTACGGCTTTACCGCTTCTCCCTGACCCAGTCACTCCTTATATTGGGCAATCGGGTTTCAAG
AACGTGCCTCTTGGGAAGGACGTCGCTACTTGCACCTTCTGGAAGGCACCCGGGACTATGAGTGGCTG
GAAGCACTGCTTATGAATCAGACGGTGATGTCAAAAAACCTTTTCTGGTTCAGGCACAGACCCAGGAA
GCTTTTTCGGGAAGCCCTGCACATGGACAGGTACCTGTTGCTGCACCCAGACTTTCTCCGATACATGAAG
AACAGGTTTCTGAGGTCTAAGACCCTGGATGGTGGCCACTGGAGGATATACCGCCCCACCACTGGGGCC
CTCCTGCTGCTCACTGCCCTCAGCTCTGTGACCAGGTGAGTGCTTATGGCTTCACTGAGGGCCAT
GAGCGCTTTTCTGATCACTACTATGATACATCATGGAAGCGGCTGATCTTTTACATAAACCATGACTTC
AAGCTGGAGAGAGAAGTCTGGAAGCGGCTACACGATGAAGGGATAATCCGGCTGTACCAGCGTCTGGT
CCCGAACTGCCAAAGCCAAGAAC
ACGCGTACGCGGCCGCTCGAG - GFP Tag - GTTAAAC
```



[View online >](#)

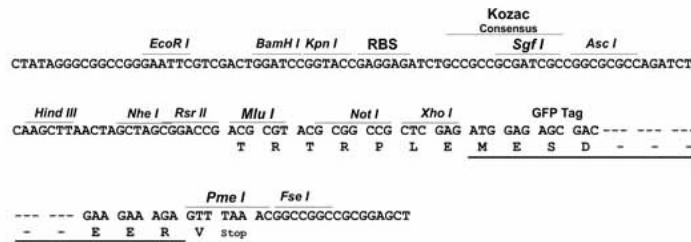
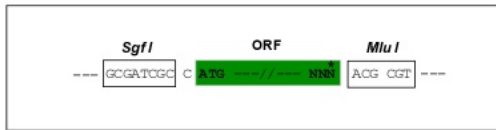
Protein Sequence: >Peptide sequence encoded by RG238401
 Blue=ORF Red=Cloning site Green=Tag(s)

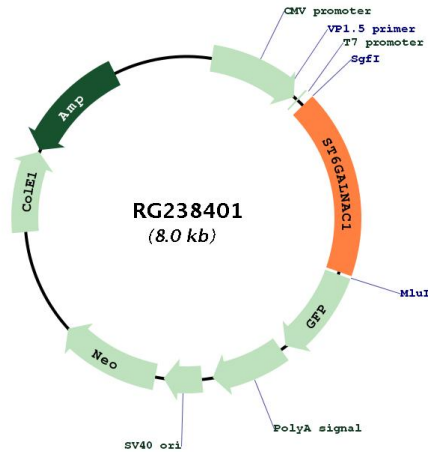
MVNTLSPRGQDAGMASGRTEAQSWSQDTKTTQGGGQTRKLTASRTVSEKHQGAATTAKTLIPKSQH
 RMLAPTGAVSTRTRQKGVTTAVIPPEKKPQATPPPAPFQSPPTQRNQLKAANFKSEPRWDFEEKYSF
 EIGGLQTTCPDSVKIKASKSLWLQKLFPLNLTLFLDSRHFNQSEWDRLEHFAPPFGMELNYSLVQKVV
 TRFPPVPQQQLLLASLPAGSLRCITCAVVGNGGILNNSHMGEIDSHDYVFRLSGALIKGYEQDVGTRT
 SFYGFTAFSLTQSLILLGNRGFKNVPLGKDVRYLHFLEGTDRDYEWLEALLMNQTVMSKNLFWFRHRPQE
 AFREALHMDRYLLLHPDFLRYMKNRFLRSKTLDGAWRIYRPTTGALLLTLALQLCDQVSAYGFITEGH
 ERFSDHYDTSWKRLIFYINHDFKLEREVWKRLHDEGIIRLYQRPGPGTAKAKN
TRTRPLEMESDESGLPAMEIECRITGTLNGVEFELVGGEGTPEQGRMTNKMSTKGALTFSPYLLSHV
 MGYGFYHFGTYPSTYENPFLHAINNGGYNTRIEKYEDGGVLHVSFSYRYEAGRVIGDFKVMGTGFPED
 SVIFTDKIIRSNATVEHLHPMGDNDLDGSFTRTFLRDGGYSSVVDSHMHFKSAIHPSILQNGGPMFA
 FRRVEEDHSNTELGIVEYQHAFKTPDADAGEERV

Restriction Sites: SgfI-MluI

Cloning Scheme:

Cloning sites used for ORF Shutting:



Plasmid Map:


ACCN:	NM_001289107
ORF Size:	1404 bp
OTI Disclaimer:	The molecular sequence of this clone aligns with the gene accession number as a point of reference only. However, individual transcript sequences of the same gene can differ through naturally occurring variations (e.g. polymorphisms), each with its own valid existence. This clone is substantially in agreement with the reference, but a complete review of all prevailing variants is recommended prior to use. More info
OTI Annotation:	This clone was engineered to express the complete ORF with an expression tag. Expression varies depending on the nature of the gene.
Components:	The ORF clone is ion-exchange column purified and shipped in a 2D barcoded Matrix tube containing 10ug of transfection-ready, dried plasmid DNA (reconstitute with 100 ul of water).
RefSeq:	NM_001289107.2
RefSeq Size:	2730 bp
RefSeq ORF:	1407 bp
Locus ID:	55808
Cytogenetics:	17q25.1
Protein Families:	Transmembrane
Protein Pathways:	Metabolic pathways, O-Glycan biosynthesis
MW:	54 kDa

Gene Summary:

Glycosylation of proteins affects cell-cell interaction, interactions with the matrix, and the functions of intracellular molecules. ST6GALNAC1 transfers a sialic acid, N-acetylneuraminic acid (NeuAc), in an alpha-2,6 linkage to O-linked GalNAc residues. The cancer-associated sialyl-Tn (sTn) antigen is formed by ST6GALNAC1-catalyzed sialylation of GalNAc residues on mucins (Ikehara et al., 1999 [PubMed 10536037]; Sewell et al., 2006 [PubMed 16319059]). [supplied by OMIM, Mar 2008]