

## Product datasheet for **RG238381**

### PLAGL1 (NM\_001289047) Human Tagged ORF Clone

#### Product data:

Product Type:	Expression Plasmids
Product Name:	PLAGL1 (NM_001289047) Human Tagged ORF Clone
Tag:	TurboGFP
Symbol:	PLAGL1
Synonyms:	LOT1; ZAC; ZAC1
Mammalian Cell Selection:	Neomycin
Vector:	pCMV6-AC-GFP (PS100010)
E. coli Selection:	Ampicillin (100 ug/mL)
ORF Nucleotide Sequence:	>RG238381 representing NM_001289047. Blue=ORF Red=Cloning site Green=Tag(s)

```
GCTCGTTTGTAGTGAACCGTCAGAATTTTGTAAACGACTCACTATAGGGCGCCGGGAATTCGTCGACTG
GATCCGGTACCGAGGAGATCTGCCGCCCGATCGCC
ATGGCCACGTTCCCTGCCAGTTATGTGGCAAGACGTTCCCTCACCTGGAGAAGTTCACGATTCACAAT
TATTCCCACTCCAGGGAGCGCCGTACAAGTGTGTGCAGCCTGACTGTGGCAAAGCCTTTGTTCCAGA
TATAAATTGATGAGGCATATGGCTACCCATTCTCCCCAGAAATCTCACCAGTGTGCTCACTGTGAGAAG
ACGTTCAACCGGAAAGACCACCTGAAAAACCACCTCCAGACCCACGACCCCAACAAAATGGCCTTTGGG
TGTGAGGAGTGTGGGAAGAAGTACAACACCATGCTGGGCTATAAGAGGCACCTGGCCCTCCATGCGGCC
AGCAGTGGGACCTCACCTGTGGGTCTGTGCCCTGGAGCTAGGGAGCACCGAGGTGCTACTGGACCAC
CTCAAAGCCCATGCGGAAGAGAAGCCCTAGCGGAACCAAGGAAAAGAAGCACCAGTGCAGACCAGTGT
GAAAGATGCTTCTACACCGGAAGGATGTGCGACGCCACCTGGTGGTCCACACAGGATGCAAGGACTTC
CTGTGCCAGTTCTGTGCCAGAGATTTGGGCGCAAGGATCACCTCACCCGCATACCAAGAAGACCCAC
TCACAGGAGCTGATGAAAGAGAGCTTGCAGACCGGAGACCTTCTGAGCACCTTCCACACCATCTCGCT
TCATCCAACGAAGGCTGCTGCCTTGCCTCCTTTCCCTTAGGAGCTTCTGCCAGAACGGGCTTGCA
AGTAGCTTGCCAGCTGAGGTCCATAGCCTCACCTCAGTCCCCAGAACAAGCCGCCAGCCTATGCAG
CCGCTGCCAGAGTCCCTGGCCTCCCTCCACCCCTCGGTATCCCTGGCTCTCCTCCGCCACCCCTTCCC
AATCACAAGTACAACACCACCTTCTACCTCATACTCCCCACTTGCAAGCCTGCCCTCAAAGCAGATACT
AAAGTTTTTGAATATCAGTTTGTGGGACTTGCCCTGCAAGAGCCTCAGTACCTCAAAGGCTC
AACCCAGTTTTGATCTGGCTAAGGAAATGCTGGTAAAGTAAACCTGCCAAGGAGCTGCTGCAGAT
GCTGTGAACCTAACAAATACCTGCCTCTCTGGACCTGTCCCCCTGTTGGGCTTCTGGCAGCTGCCCTT
CCTGCTACCCAAAATACCTTTGGGAATAGCACTTGGCCCTGGGGCTGGGGAATCTTTGCCACAGG
TTAAGCTGTCTGGGCGAGCAGCAGCAAGAACCCCACTTGCCATGGGCACTGTGAGCCTGGGCCAGCTC
CCCCTGCCCCCATCCCTCATGTGTTCTCAGTGGCACTGGCTTGCATCCTGCCTCATTTCCATCAT
GCATTCAGA
ACGCGTACGCGGCCGCTCGAG - GFP Tag - GTTAAAC
```



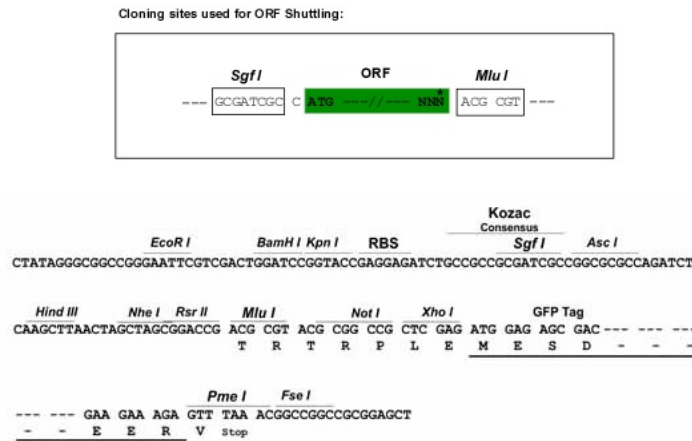
View online »

**Protein Sequence:** >Peptide sequence encoded by RG238381  
 Blue=ORF Red=Cloning site Green=Tag(s)

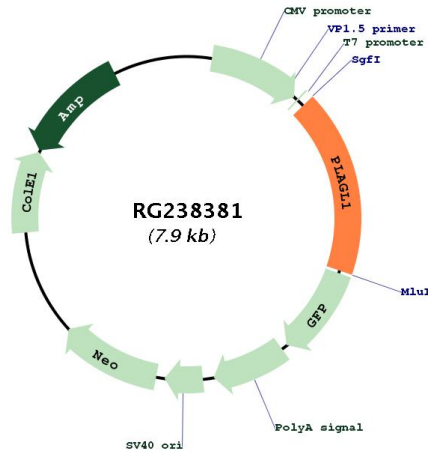
MATFPCQLCGKTFLTLEKFTIHNYSRERPYKCVQPCGKAFVSRYLKMRHMATHSPQKSHQCAHCEK  
 TFNRKDHLLKNHLQTHDPNKMAFGCEECGKKYNTMLGYKRHLALHAASSGDLTCGVCALGSTEVLDDH  
 LKAHAEEKPPSGTKEKKHQCDHCERCIFYTRKDVRRHLVHTGCKDFLCQFCAQRFGRKDHLTRHTKKTH  
 SQELMKEQLQTGDLLSTFHITISPSFQLKAAALPPFPLGASAQNGLASSLPAEVHSLTLPPEQAAQPMQ  
 PLPESLASLHPSVSPGSPPPPLPNHKYNTTSTYSPLASLPLKADTKGFNCNLSLFEDLPLQEPQSPQKL  
 NPGFDLAKGNAGKVNLPKELPADAVNLTIPASLDLSPLLGFWQLPPPATQNTFGNSTLALGPGESLPHR  
 LSCLGQQQEPPLAMGTVSLGQLPLPIPHVFSAGTGSAILPHFHAFR  
**TRTRPLEMESDESGLPAMEIECRITGTLNGVEFELVGGGEGTPEQGRMTNKMSTKGALTFSPYLLSHV**  
 MGYGFYHFGTYPSTYENPFLHAINNGGYNTRIEKYEDGGVLHVSFSYRYEAGRVIGDFKVMGTGFPED  
 SVIFTDKIIRSNATVEHLHPMGDNDLDGSFTRTFLRDGGYSSVVDSHMHFKSAIHPSILQNGGPMFA  
 FRRVEEDHSNTELGIVEYQHAFKTPDADAGEERV

**Restriction Sites:** SgfI-MluI

**Cloning Scheme:**



## Plasmid Map:



ACCN: NM\_001289047

ORF Size: 1389 bp

OTI Disclaimer: The molecular sequence of this clone aligns with the gene accession number as a point of reference only. However, individual transcript sequences of the same gene can differ through naturally occurring variations (e.g. polymorphisms), each with its own valid existence. This clone is substantially in agreement with the reference, but a complete review of all prevailing variants is recommended prior to use. [More info](#)

OTI Annotation: This clone was engineered to express the complete ORF with an expression tag. Expression varies depending on the nature of the gene.

Components: The ORF clone is ion-exchange column purified and shipped in a 2D barcoded Matrix tube containing 10ug of transfection-ready, dried plasmid DNA (reconstitute with 100 ul of water).

RefSeq: [NM\\_001289047.1](#), [NP\\_001275976.1](#)

RefSeq Size: 3254 bp

RefSeq ORF: 1392 bp

Locus ID: 5325

UniProt ID: [Q9UM63](#)

Cytogenetics: 6q24.2

Protein Families: Transcription Factors

MW: 50.8 kDa

**Gene Summary:**

This gene encodes a C2H2 zinc finger protein that functions as a suppressor of cell growth. This gene is often deleted or methylated and silenced in cancer cells. In addition, overexpression of this gene during fetal development is thought to be the causal factor for transient neonatal diabetes mellitus (TNDM). Alternative splicing and the use of alternative promoters results in multiple transcript variants encoding two different protein isoforms. The P1 downstream promoter of this gene is imprinted, with preferential expression from the paternal allele in many tissues. [provided by RefSeq, Nov 2015]