

## Product datasheet for **RG238261**

### IL20 Receptor alpha (IL20RA) (NM\_001278723) Human Tagged ORF Clone

#### Product data:

Product Type:	Expression Plasmids
Product Name:	IL20 Receptor alpha (IL20RA) (NM_001278723) Human Tagged ORF Clone
Tag:	TurboGFP
Symbol:	IL20RA
Synonyms:	CRF2-8; IL-20R-alpha; IL-20R1; IL-20RA
Mammalian Cell Selection:	Neomycin
Vector:	pCMV6-AC-GFP (PS100010)
E. coli Selection:	Ampicillin (100 ug/mL)
ORF Nucleotide Sequence:	>RG238261 representing NM_001278723. Blue=ORF Red=Cloning site Green=Tag(s)

```
GCTCGTTTGTAGTGAACCGTCAGAATTTTGTAAACGACTCACTATAGGGCCGCCGGGAATTCGTCGACTG
GATCCGGTACCGAGGAGATCTGCCGCCGCGATCGCC
ATGTCCTACAATGGACTCCACCAGAGGGTCTTCAAGGAGTTAAAGTTACTTACACTGTGCAGTATTTCA
TCACAAATTTGGCCACCAGAGGTGGCACTGACTACAGATGAGAAGTCCATTTCTGTTGTCCTGACAGCT
CCAGAGAAGTGAAGAGAAAATCCAGAAGACCTTCTGTTCCATGCAACAAATATACTCCAATCTGAAG
TATAACGTGTCTGTGTTGAATACTAAATCAAACAGAACGTGGTCCAGTGTGTGACCAACCACACGCTG
GTGCTCACCTGGCTGGAGCCGAACACTCTTACTGCGTACACGTGGAGTCCCTCGTCCAGGGCCCCCT
CGCCGTGCTCAGCCTTCTGAGAAGCAGTGTGCCAGGACTTGAAGATCAATCATCAGAGTTCAAGGCT
AAAATCATCTTCTGGTATGTTTTGCCCATATCTATTACCGTGTTCCTTTTTCTGTGATGGGCTATTCC
ATCTACCGATATATCCACGTTGGCAAAGAGAAACACCCAGCAAATTTGATTTTGATTTATGGAAATGAA
TTTGACAAAAGATTCTTTGTGCCTGCTGAAAAATCGTGATTAACCTTTATCACCCCTCAATATCTCGGAT
GATTCTAAAATTTCTCATCAGGATATGAGTTTACTGGGAAAAAGCAGTGATGTATCCAGCCTTAATGAT
CCTCAGCCAGCGGGAACCTGAGGCCCCCTCAGGAGGAAGAGGAGGTGAAACATTTAGGGTATGCTTCG
CATTTGATGGAATTTTTTGTGACTCTGAAGAAAAACGGAAGGTACTTCTCTCACCCAGCAAGAGTCC
CTCAGCAGAACAATACCCCGGATAAAAACAGTCATTGAATATGAATATGATGTGAGAACCCTGACATT
TGTGCGGGCCTGAAGAGCAGGAGCTCAGTTTGCAGGAGGAGGTCCACACAAGGAACATTATTGGAG
TCGAGGCAGCGTTGGCAGTCTTGGGCCGCAAACGTTACAGTACTCATACCCCTCAGCTCCAAGAC
TTAGACCCCTGGCGCAGGAGCACACAGACTCGGAGGAGGGGCCGAGGAAGAGCCATCGACGACCTG
GTCGACTGGGATCCCAAACCTGGCAGGCTGTGTATTCCTTCGCTGTCCAGCTTCGACCAGGATTCAGAG
GGCTGCGAGCCTTCTGAGGGGATGGGCTCGGAGAGGAGGCTTCTATCTAGACTCTATGAGGAGCCG
GCTCCAGACAGGCCACCAGGAGAAAATGAAACCTATCTCATGCAATTCATGGAGGAATGGGGTTATAT
GTGCAGATGGAAC
ACGCGTACGCGGCCGCTCGAG - GFP Tag - GTTTAAAC
```



[View online »](#)

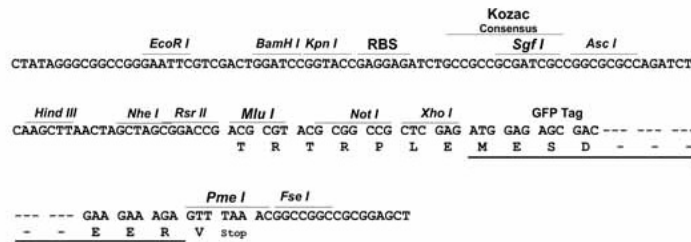
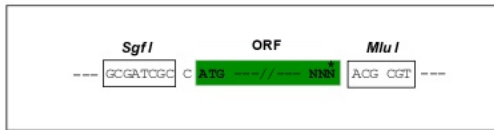
Protein Sequence: >Peptide sequence encoded by RG238261  
 Blue=ORF Red=Cloning site Green=Tag(s)

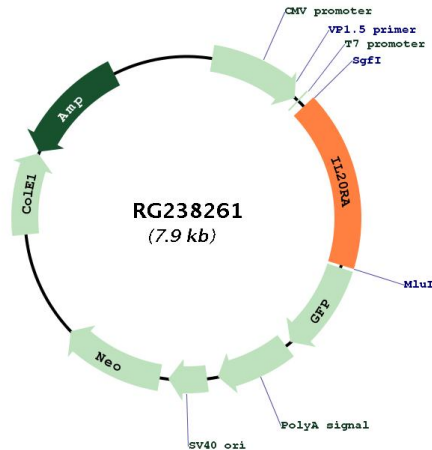
MSYNGLHQRVFKELKLLTLCSSISQIGPPEVALTTDEKISISVVLTAPEKWKRNPEDLPVSMQQIYSNLK  
 YNVSVLNTKSNRTWSQCVTNHTLVLTWLEPNTLYCVHVESFVPGPPRAQPSEKQCARTLKDQSSEFKA  
 KIIFWYVLPISITVFLFSVMGYSIYRYIHVGEKHPANLILYGNFDRFFVPAEKIVINFITLNI  
 DSKISHQDMSLLGKSSDVSSLNDPQPSGNLRPPQEEEEVKHLGYASHLMEIFCDSEENTEGTSLTQES  
 LSRTIPDPKTVIEYEDVRTTDCAGPEEQELSLQEEVSTQGTLLLESQAALAVLGPQTLQYSYTPQLQD  
 LDPLAQEHTDSEEGPEEESTTLLVDWDPQTGRLCIPSLSSFDQDSEGCEPSEGDLGEEGLLSRLYEEP  
 APDRPPGENETYLMQFMEEWGLYVQMEN  
**TR**TRPLEMESDESGLPAMEIECRITGTLNGVEFELVGGEGTPEQGRMTNKMSTKGALTFSPYLLSHV  
 MGYGFYHFGTYPSTYENPFLHAINNGGYNTRIEKYEDGGVLHVSFSYRYEAGRVIGDFKVMGTGFPED  
 SVIFTDKIIRSNATVEHLHPMGDNDLDGSFTRTFLRDGGYSSVVDSHMHFKSAIHPSILQNGGPMFA  
 FRRVEEDHSNTELGIVEYQHAFKTPDADAGEERV

Restriction Sites: SgfI-MluI

Cloning Scheme:

Cloning sites used for ORF Shutting:



**Plasmid Map:**


**ACCN:** NM\_001278723

**ORF Size:** 1326 bp

**OTI Disclaimer:** Due to the inherent nature of this plasmid, standard methods to replicate additional amounts of DNA in E. coli are highly likely to result in mutations and/or rearrangements. Therefore, OriGene does not guarantee the capability to replicate this plasmid DNA. Additional amounts of DNA can be purchased from OriGene with batch-specific, full-sequence verification at a reduced cost. Please contact our customer care team at [custsupport@origene.com](mailto:custsupport@origene.com) or by calling 301.340.3188 option 3 for pricing and delivery.

The molecular sequence of this clone aligns with the gene accession number as a point of reference only. However, individual transcript sequences of the same gene can differ through naturally occurring variations (e.g. polymorphisms), each with its own valid existence. This clone is substantially in agreement with the reference, but a complete review of all prevailing variants is recommended prior to use. [More info](#)

**OTI Annotation:** This clone was engineered to express the complete ORF with an expression tag. Expression varies depending on the nature of the gene.

**Components:** The ORF clone is ion-exchange column purified and shipped in a 2D barcoded Matrix tube containing 10ug of transfection-ready, dried plasmid DNA (reconstitute with 100 ul of water).

**RefSeq:** [NM\\_001278723.1](#), [NP\\_001265652.1](#)

**RefSeq Size:** 3522 bp

**RefSeq ORF:** 1329 bp

**Locus ID:** 53832

**UniProt ID:** [Q9UHF4](#)

**Cytogenetics:** 6q23.3

<b>Protein Families:</b>	Druggable Genome, Transmembrane
<b>Protein Pathways:</b>	Cytokine-cytokine receptor interaction, Jak-STAT signaling pathway
<b>MW:</b>	49.9 kDa
<b>Gene Summary:</b>	This gene encodes a member of the type II cytokine receptor family. The encoded protein is a subunit of the receptor for interleukin 20, a cytokine that may be involved in epidermal function. The interleukin 20 receptor is a heterodimeric complex consisting of the encoded protein and interleukin 20 receptor beta. This gene and interleukin 20 receptor beta are highly expressed in skin, and are upregulated in psoriasis. Alternative splicing results in multiple transcript variants. [provided by RefSeq, Jul 2013]