

Product datasheet for **RG238184**

EAAT1 (SLC1A3) (NM_001289940) Human Tagged ORF Clone

Product data:

Product Type:	Expression Plasmids
Product Name:	EAAT1 (SLC1A3) (NM_001289940) Human Tagged ORF Clone
Tag:	TurboGFP
Symbol:	SLC1A3
Synonyms:	EA6; EAAT1; GLAST; GLAST1
Mammalian Cell Selection:	Neomycin
Vector:	pCMV6-AC-GFP (PS100010)
E. coli Selection:	Ampicillin (100 ug/mL)
ORF Nucleotide Sequence:	>RG238184 representing NM_001289940. Blue=ORF Red=Cloning site Green=Tag(s)

```
GCTCGTTTAGTGAACCGTCAGAATTTGTAAACGACTACTATAGGGCGCCGGGAATTCGTCGACTG
GATCCGGTACCGAGGAGATCTGCCGCCGCGATCGCC
ATGACTAAAAGCAATGGAGAAGAGCCAAAGATGGGGGCGAGGATGGAGAGATTCCAGCAGGGAGTCCGT
AAACGCACACTTTTGGCCAAGAAGAAAGTGCAGAACATTACAAAGGAGGATGTTAAAAGTTACCTGTTT
CGGAATGCTTTTGTGCTGCTCACAGTCACCGCTGTCATTGTGGGTACAATCCTTGGATTTACCCTCCGA
CCATACAGAATGAGCTACCGGGAAGTCAAGTACTTCTCCTTTCTGGGAACTTCTGATGAGGATGTTA
CAGATGCTGGTCTTACCACTTATCATCTCCAGTCTTGTCACAGGAATGGCGGCGTAGATAGTAAGCA
TCAGGGAAGATGGGAATGCGAGCTGTAGTCTATTATGACTACCACCATCATTGCTGTGGTGATTGGC
ATAATCATTGTGCATCATCCATCCTGGGAAGGGCACAAAGGAAAACATGCACAGAGAAGGCAAAATT
GTACGAGTGACAGCTGCAGATGCCTTCTGGACTTGATCAGGTATGCCCCGTTGGTATTCTCTTCTCTG
ATTGCTGGGAAGATTGTGGAGATGGAAGACATGGGTGTGATTGGGGGCGAGCTTGCCATGTACACCGTG
ACTGTCATTGTTGGCTTACTCATTACCGCAGTCATCGTCTTGCCACTCCTCTACTTCTTGGTAACACGG
AAAAACCTTGGGTTTTTATTGGAGGGTTGCTGCAAGCACTCATCACCCTCTGGGGACCTTCAAGT
TCTGCCACCCTACCCATCACCTTCAAGTGCCTGGAAGAGAACAATGGCGTGGACAAGCGCGTCACCAGA
TTCGTGCTCCCCGTAGGAGCCACCATTAACATGGATGGGACTGCCCTCTATGAGGCTTTGGCTGCCATT
TTCATTGCTCAAGTTAACAACCTTGAACCTGAACTCGGACAAATTATTACAATCAGCATCACAGCCACA
GCTGCCAGTATTGGGGCAGCTGGAATTCCTCAGGCGGGCCTGGTCACTATGGTCATTGTGCTGACATCT
GTCGGCCTGCCACTGACGACATCACGCTCATCATCGCGGTGGACTGGTTCTGGATCGCCTCCGGACC
ACCACCAACGTAAGGAGACTCCCTGGGAGCTGGGATTGTGGAGCACTGTGACGACATGAACTGAAG
AACAGAGATGTTGAAATGGGTAACCTCAGTGATTGAAGAGAATGAAATGAAGAAACCATATCAACTGATT
GCACAGGACAATGAACTGAGAAACCCATCGACAGTGAACCAAGATG
ACGCGTACGCGGCCGCTCGAG - GFP Tag - GTTTAAAC
```



[View online »](#)

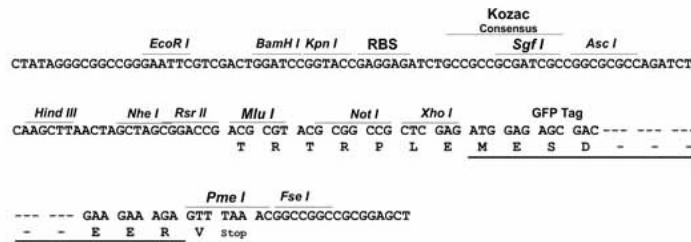
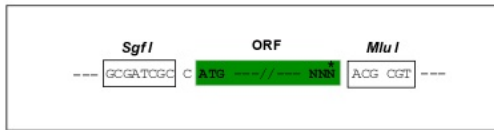
Protein Sequence: >Peptide sequence encoded by RG238184
 Blue=ORF Red=Cloning site Green=Tag(s)

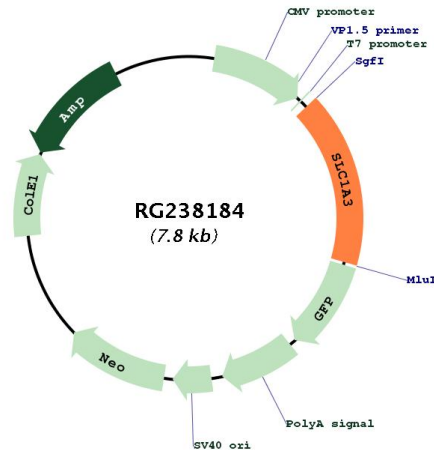
MTKSNGEPEKMGGRMERFQQGVRKRTLLAKKKVQNIKEDVKSYLFRNAFVLLTAVIVGTILGFTLR
 PYRMSYREVKYFSFPGELLMRMLQMLVPLIISLVTGMAALDSKASGKMGMRVAVVYMTTIIIVVIG
 IIVVIIHPGKGTKENMHREGKIVRVTAADAFDLIRYAPVIGLFLIAGKIVEMEDMGVIGGQLAMVTV
 TVIVGLLIHAVIVLPLL YFLVTRKNPWVFIGLLQALITALGTSSSATLPITFKCLEENNGVDKRVTR
 FVLPVGATINMDGTALYEALAAIFIAQVNNFELNFGQIITISITATAASIGAAGIPQAGLVTMVIVLTS
 VGLPTDDITLIIAVDWFLDRLRTTTNVLGDLSGAGIVEHLRHELKNRDVEMGNSVIEENEMKKPYQLI
 AQDNETEKPIDSETKM
TRTRPLEMESDESGLPAMEIECRITGTLNGVEFELVGGEGTPEQGRMTNKMSTKGALTFSPYLLSHV
 MGYGFYHFGTYPSTYENPFLHAINNGGYNTRIEKYEDGGVLHVSFSYRYEAGRVIGDFKVMGTGFPED
 SVIFTDKIIRSNATVEHLHPMGDNDLDGSFTRTFLRDGGYSSVVDSHMHFKSAIHPSILQNGGPMFA
 FRRVEEDHSNTELGIVEYQHAFKTPDADAGEERV

Restriction Sites: SgfI-MluI

Cloning Scheme:

Cloning sites used for ORF Shuttling:



Plasmid Map:


ACCN: NM_001289940

ORF Size: 1290 bp

OTI Disclaimer: The molecular sequence of this clone aligns with the gene accession number as a point of reference only. However, individual transcript sequences of the same gene can differ through naturally occurring variations (e.g. polymorphisms), each with its own valid existence. This clone is substantially in agreement with the reference, but a complete review of all prevailing variants is recommended prior to use. [More info](#)

OTI Annotation: This clone was engineered to express the complete ORF with an expression tag. Expression varies depending on the nature of the gene.

Components: The ORF clone is ion-exchange column purified and shipped in a 2D barcoded Matrix tube containing 10ug of transfection-ready, dried plasmid DNA (reconstitute with 100 ul of water).

RefSeq: [NM_001289940.1](#), [NP_001276869.1](#)

RefSeq Size: 3852 bp

RefSeq ORF: 1293 bp

Locus ID: 6507

UniProt ID: [P43003](#)

Cytogenetics: 5p13.2

Protein Families: Transmembrane

MW: 47.5 kDa

Gene Summary: This gene encodes a member of a member of a high affinity glutamate transporter family. This gene functions in the termination of excitatory neurotransmission in central nervous system. Mutations are associated with episodic ataxia, Type 6. Alternative splicing results in multiple transcript variants.[provided by RefSeq, Feb 2014]