

Product datasheet for **RG238167**

JNK1 (MAPK8) (NM_001278547) Human Tagged ORF Clone

Product data:

Product Type:	Expression Plasmids
Product Name:	JNK1 (MAPK8) (NM_001278547) Human Tagged ORF Clone
Tag:	TurboGFP
Symbol:	MAPK8
Synonyms:	JNK; JNK-46; JNK1; JNK1A2; JNK21B1/2; PRKM8; SAPK1; SAPK1c
Mammalian Cell Selection:	Neomycin
Vector:	pCMV6-AC-GFP (PS100010)
E. coli Selection:	Ampicillin (100 ug/mL)
ORF Nucleotide Sequence:	>RG238167 representing NM_001278547. Blue=ORF Red=Cloning site Green=Tag(s)

```
GCTCGTTTAGTGAACCGTCAGAATTTTGTAAACGACTACTATAGGGCCGCCGGGAATTCGTCGACTG
GATCCGGTACCGAGGAGATCTGCCGCCGCGATCGCC
ATGAGCAGAAGCAAGCGTGACAACAATTTTATAGTGTAGAGATTGGAGATTCTACATTCACAGTCTCG
AAACGATATCAGAATTTAAACCTATAGGCTCAGGAGCTCAAGGAATAGTATGCGCAGCTTATGATGCC
ATTCTTGAAGAAATGTTGCAATCAAGAAGCTAAGCCGACCATTTGAGAATCAGACTCATGCCAAGCGG
GCCTACAGAGAGCTAGTCTTATGAAATGTGTTAATCACAAAAATATAATTGGCCTTTTGAATGTTTTTC
ACACCACAGAAAATCCCTAGAAGAATTTCAAGATGTTTACATAGTCATGGAGCTCATGGATGCAAATCTT
TGCCAAGTGATTCAGATGGAGCTAGATCATGAAAGAATGCCTACCTTCTATCAGATGCTGTGTGGA
ATCAAGCACCTTCATTCTGCTGGAATTATTCATCGGGACTTAAAGCCAGTAATATAGTAGTAAAATCT
GATTGCACTTTGAAGATTCCTGACTTCGGTCTGGCCAGGACTGCAGGAACGAGTTTTATGATGACGCTT
TATGTAGTGACTCGTACTACAGAGCACCCGAGGTCATCCTTGGCATGGGCTACAAGGAAAACGTTGAC
ATTTGGTCAGTTGGGTGCATCATGGGAGAAATGATCAAAGGTGGTGTGTTTGTCCAGGTACAGATCAT
ATTGATCAGTGAATAAAGTTATTGAACAGCTTGAACACCATGTCCTGAATTCATGAAGAACTGCAA
CCAACAGTAAGGACTTACGTTGAAAACAGACCTAAATATGCTGGATATAGCTTTGAGAACTCTTCCT
GATGTCCTTTTCCAGCTGACTCAGAACAACAACAACTTAAAGCCAGTCAGGCAAGGGATTTGTTATCC
AAAATGCTGGTAATAGATGCATCTAAAAGGATCTCTGTAGATGAAGCTCTCCAACACCCGTACATCAAT
GTCTGGTATGATCCTTCTGAAGCAGAAGCTCCACCACAAAGATCCCTGACAAGCAGTTAGATGAAAGG
GAACACACAATAGAAGAGTGAAAGAATTGATATATAAGGAAGTTATGGACTTGGAGGAGAGAACCAAG
AATGGAGTTATACGGGGCAGCCCTCTCCTTTAGGTGCAGCAGTGATCAATGGCTCTCAGCATCCATCA
TCATCGTCGTCTGCAATGATGTGCTTCAATGTCAACAGATCCGACTTTGGCCTCTGATACAGACAGC
AGTCTAGAAGCAGCAGCTGGCCTCTGGGCTGCTGTAGA
ACGCGTACGCGGCCGCTCGAG - GFP Tag - GTTTAAAC
```



[View online »](#)

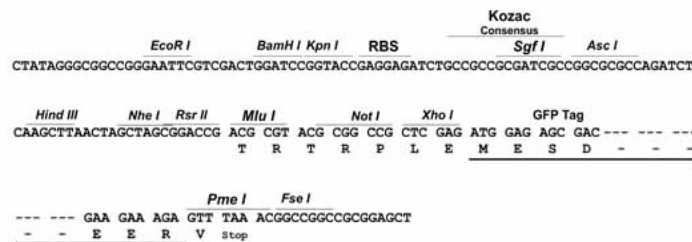
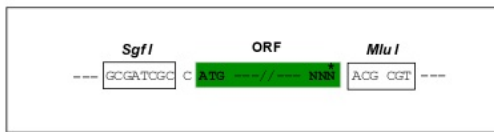
Protein Sequence: >Peptide sequence encoded by RG238167
 Blue=ORF Red=Cloning site Green=Tag(s)

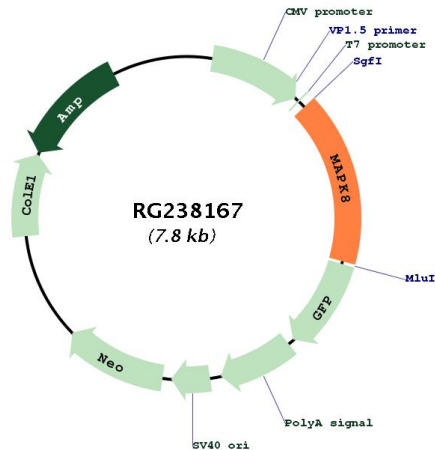
MSRSKRDNFYSVEIGDSTFTVLKRYQNLKPIGSGAQGIVCAAYDAILERNVAIKKLSRPFQNTTHAKR
 AYRELVLKMCVNHKNIIGLLNVFTPQKSLEEFQDVYIVMELMDANLCQVIQMELDHERMSYLLYQMLCG
 IKHLHSAGIIHRDLKPSNIVVKSDDLKILDFGLARTAGTSFMMTPYVVTRYRAPEVILGMYKENVD
 IWSVGCIMGEMIKGGVLFPGTDHIDQWNVIEQLGTPCPEFMKKLQPTVRTYVENRPKYAGYSFEKLF
 DVLFPADSEHNKLSAQARDLLSKMLVIDASKRISVDEALQHPYINVWYDPSEAEAPPPKIPDKQLDER
 EHTIEEWKELIYKVMLEERTKNGVIRGQPSPLGAAVINGSQHPSSSSSVNDVSSMSTDPDPLASDSDS
 SLEAAAGPLGCCR
TRTRPLEMESDESGLPAMEIECRITGTLNGVEFELVGGEGTPEQGRMTNKMSTKGALTFSPYLLSHV
 MGYGFYHFGTYPSGYENPFLHAINNGGYNTRIEKYEDGGVLHVSFSYRYEAGRVIGDFKVMGTGFPED
 SVIFTDKIIIRSNATVEHLHPMGDNDLDGSFTRTFSLRDGGYSSVVDSHMHFKSAIHPSILQNGGPMFA
 FRRVEEDHSNTELGIVEYQHAFKTPDADAGEERV

Restriction Sites: SgfI-MluI

Cloning Scheme:

Cloning sites used for ORF Shuttling:



Plasmid Map:


ACCN: NM_001278547

ORF Size: 1281 bp

OTI Disclaimer: The molecular sequence of this clone aligns with the gene accession number as a point of reference only. However, individual transcript sequences of the same gene can differ through naturally occurring variations (e.g. polymorphisms), each with its own valid existence. This clone is substantially in agreement with the reference, but a complete review of all prevailing variants is recommended prior to use. [More info](#)

OTI Annotation: This clone was engineered to express the complete ORF with an expression tag. Expression varies depending on the nature of the gene.

Components: The ORF clone is ion-exchange column purified and shipped in a 2D barcoded Matrix tube containing 10ug of transfection-ready, dried plasmid DNA (reconstitute with 100 ul of water).

RefSeq: [NM_001278547.1](#), [NP_001265476.1](#)

RefSeq Size: 5854 bp

RefSeq ORF: 1284 bp

Locus ID: 5599

UniProt ID: [P45983](#)

Cytogenetics: 10q11.22

Protein Families: Druggable Genome, ES Cell Differentiation/IPS, Protein Kinase

Protein Pathways:	Adipocytokine signaling pathway, Colorectal cancer, Epithelial cell signaling in Helicobacter pylori infection, ErbB signaling pathway, Fc epsilon RI signaling pathway, Focal adhesion, GnRH signaling pathway, Insulin signaling pathway, MAPK signaling pathway, Neurotrophin signaling pathway, NOD-like receptor signaling pathway, Pancreatic cancer, Pathways in cancer, Progesterone-mediated oocyte maturation, RIG-I-like receptor signaling pathway, Toll-like receptor signaling pathway, Type II diabetes mellitus, Wnt signaling pathway
MW:	48.1 kDa
Gene Summary:	<p>The protein encoded by this gene is a member of the MAP kinase family. MAP kinases act as an integration point for multiple biochemical signals, and are involved in a wide variety of cellular processes such as proliferation, differentiation, transcription regulation and development. This kinase is activated by various cell stimuli, and targets specific transcription factors, and thus mediates immediate-early gene expression in response to cell stimuli. The activation of this kinase by tumor-necrosis factor alpha (TNF-alpha) is found to be required for TNF-alpha induced apoptosis. This kinase is also involved in UV radiation induced apoptosis, which is thought to be related to cytochrom c-mediated cell death pathway. Studies of the mouse counterpart of this gene suggested that this kinase play a key role in T cell proliferation, apoptosis and differentiation. Several alternatively spliced transcript variants encoding distinct isoforms have been reported. [provided by RefSeq, Apr 2016]</p>