

Product datasheet for **RG237452**

CRELD2 (NM_001284317) Human Tagged ORF Clone

Product data:

Product Type:	Expression Plasmids
Product Name:	CRELD2 (NM_001284317) Human Tagged ORF Clone
Tag:	TurboGFP
Symbol:	CRELD2
Mammalian Cell Selection:	Neomycin
Vector:	pCMV6-AC-GFP (PS100010)
E. coli Selection:	Ampicillin (100 ug/mL)
ORF Nucleotide Sequence:	>RG237452 representing NM_001284317. Blue=ORF Red=Cloning site Green=Tag(s)

```
GCTCGTTTAGTGAACCGTCAGAATTTTGTAAACGACTCACTATAGGGCGGCCGGGAATTCGTCGACTG
GATCCGGTACCGAGGAGATCTGCCGCCGCGATCGCC
ATGCGCCTGCCGCGCCGGGCGCGCTGGGGCTCCTGCCGCTTCTGCTGCTGCTGCCGCCCGCCGGAG
GCCGCCAAGAAGCCGACGCCCTGCCACCGGTGCCGGGGGCTGGTGGACAAGTTAACCAGGGGATGGTG
GACACCGCAAAGAAGAACTTTGGCGCGGGGAACACGGCTTGGGAGGAAAAGACGCTGTCCAAGTACGAG
TCCAGCGAGATTCGCCTGCTGGAGATCCTGGAGGGGCTGTGCGAGAGCAGCGACTTCCAATGCAATCAG
ATGCTAGAGGCGCAGGAGGAGCACCTGGAGGCCCTGGTGGCTGCAGCTGAAGAGCGAATATCCTGACTTA
TTCGAGTGGTTTTGTGTGAAGACTGAAAGTGTGCTCTCCAGGAACCTACGGTCCCAGTGTCTC
GCATGCCAGGGCGGATCCAGAGGCCCTGCAGCGGAATGGCCACTGCAGCGGAGATGGGAGCAGACAG
GGCGACGGGTCTGCCGGTGCCACATGGGGTACCAGGGCCCGCTGTGCACTGACTGCATGGACGGCTAC
TTCAGCTCGTCCGGAACGAGACCCACAGCATCTGCACAGCCTGTGACGAGTCTGCAAGACGTGCTCG
GGCCTGACCAACAGAGACTGCGGCGAGTGTGAAGTGGGCTGGGTGCTGGACGAGGGCGCCTGTGTGGAG
TGTGACTCCAGCTGTGTGGGCTGCACAGGGGAAGGCCAGGAACTGTAAGAGTGTATCTCTGGCTAC
GCGAGGGAGCACGGACAGTGTGCAGATGTGACGAGTGTCTACTAGCAGAAAAAACCCTGTGTGAGGAAA
AACGAAAACCTGCTACAATACTCCAGGGAGCTACGTCTGTGTGTCTGACGGCTTCAAGAAACGGAA
GATGCCTGTGTGCCCGCCGAGAGGCTGAAGCCACAGAAGGAGAAAGCCGACACAGCTGCCCTCCCGC
GAAGACCTG
ACGCGTACGCGGCCGCTCGAG - GFP Tag - GTTTAAAC
```



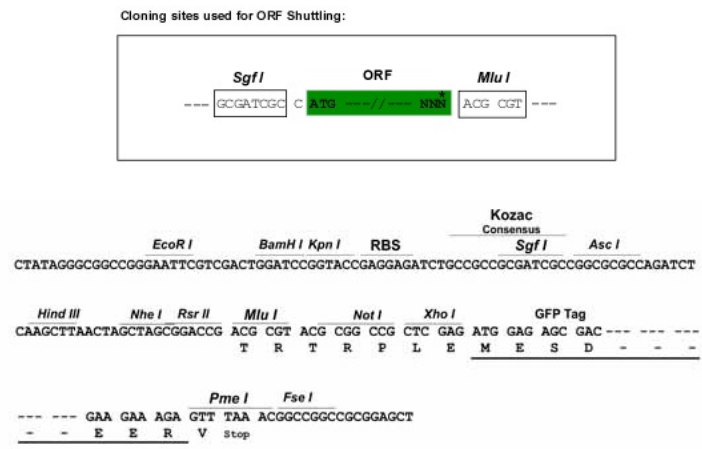
[View online »](#)

Protein Sequence: >Peptide sequence encoded by RG237452
 Blue=ORF Red=Cloning site Green=Tag(s)

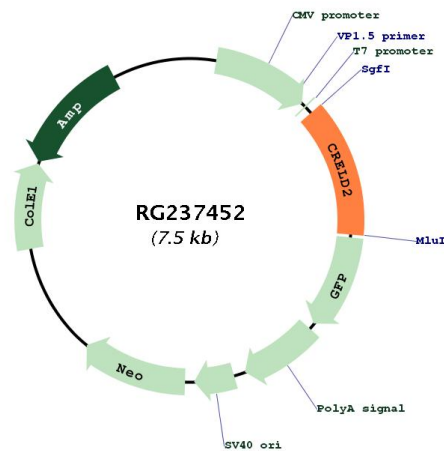
MRLPRAALGLLPLLLLLPPAPEAAKKPTPCHRCRGLVDKFNQGMVDTAKKNFGGGNTAWEKTL SKYE
 SSEIRLLEILEGLCESSDFECNQMLEAQEEHLEAWWLQLKSEYDPLFEWFCVKTLKVCCSPGTYGPDCL
 ACQGGSSQRPCSGNGHCSGDGSRQGDGSCRCHMGYQGPLCTDCMDGYFSSLRNETHSICTACDESKTCS
 GLTNRDCGECEVGVWLDGACVECDSSVCVGTGEGPGNCKECISGYAREHGQCADVDECSLAEKTQVRK
 NENCYNTPGSYVCPDGFEEEDACVPPAEAEATEGESPTQLPSREDL
TRTRPLEMESDESGLPAMEIECRITGTLNGVEFELVGGGEGTPEQGRMTNKMKSTKGALTFSPYLLSHV
 MGYGFYHFGTYPSTYENPFLHAINNGGYNTRIEKYEDGGVLHVSFSYRYEAGRVIGDFKVMGTGFPEP
 SVIFTDKIIRS NATVEHLHPMGDNDLDGSFTRTFSLRDGGYSSVVD SHMHFKSAIHPSILQNGGPMFA
 FRRVEEDHSNTELGIVEYQHAFKTPDADAGEERV

Restriction Sites: SgfI-MluI

Cloning Scheme:



Plasmid Map:



ACCN:	NM_001284317
ORF Size:	975 bp
OTI Disclaimer:	The molecular sequence of this clone aligns with the gene accession number as a point of reference only. However, individual transcript sequences of the same gene can differ through naturally occurring variations (e.g. polymorphisms), each with its own valid existence. This clone is substantially in agreement with the reference, but a complete review of all prevailing variants is recommended prior to use. More info
OTI Annotation:	This clone was engineered to express the complete ORF with an expression tag. Expression varies depending on the nature of the gene.
Components:	The ORF clone is ion-exchange column purified and shipped in a 2D barcoded Matrix tube containing 10ug of transfection-ready, dried plasmid DNA (reconstitute with 100 ul of water).
RefSeq:	NM_001284317.2
RefSeq Size:	1365 bp
RefSeq ORF:	978 bp
Locus ID:	79174
UniProt ID:	Q6UXH1
Cytogenetics:	22q13.33
Protein Families:	Druggable Genome, Secreted Protein
MW:	35.7 kDa
Gene Summary:	May regulate transport of alpha4-beta2 neuronal acetylcholine receptor.[UniProtKB/Swiss-Prot Function]