

Product datasheet for **RG237085**

Chimaerin 2 (CHN2) (NM_001293076) Human Tagged ORF Clone

Product data:

Product Type:	Expression Plasmids
Product Name:	Chimaerin 2 (CHN2) (NM_001293076) Human Tagged ORF Clone
Tag:	TurboGFP
Symbol:	CHN2
Synonyms:	ARHGAP3; BCH; CHN2-3; RHOGAP3
Mammalian Cell Selection:	Neomycin
Vector:	pCMV6-AC-GFP (PS100010)
E. coli Selection:	Ampicillin (100 ug/mL)
ORF Nucleotide Sequence:	>RG237085 representing NM_001293076. Blue=ORF Red=Cloning site Green=Tag(s)

```
GCTCGTTTAGTGAACCGTCAGAATTTGTAAACGACTCACTATAGGGCGCCGGGAATTCGTCGACTG
GATCCGGTACCGAGGAGATCTGCCGCCGCGATCGCC
ATGTTCTCTGAAGAACTGTGGCTGGAAAATGAGAAAAGTGTGCTGTGGTTCGGAAGTCTAAGCAGGGC
AGGAAACGCCAAGAACTGCTGGCCGTAGCCTTCGGGGTGAAGGTGGGTGTCAAAGCGGCTTTCTTTGG
CCCCCTCTCAAACCTTTTGCCTGTTACAGATCTCCTCCCTGGTTCGAAGGGCTGCCCTCACACACAAC
GACAACCACTTCAATTATGAGAAGACACACAACTTAAGGTCCACACGTTCCGAGGCCACACTGGTGT
GAATATTGTGCCAATTTATGTGGGGCTCATCGCCCAAGGGTCCGGTGCTCAGGATTAATCGGAA
GGCCTTTACAGAGTCTCTGGGTTCACTGAACACATTGAAGATGTCAAAATGGCATTGACAGAGATGGT
GAAAAGGCCGATATATCTGCCAATGTCTATCCAGACATAAACATCATCACTGGAGCCCTTAACTGTAT
TTCAGAGACTTACCCATCCCTGTCATCACATATGATACCTATTCCAAATTTATAGATGCAGCAAAAATC
TCCAATGCAGATGAGAGGCTGGAAGCCGTCATGAAGTGCTGATGCTGCTGCCTCCTGCCCACTATGAA
ACCCTCCGGTACCTAATGATCCACCTCAAAAAGGTTACTATGAATGAAAAAGACAATTTATGAATGCA
GAAAATCTGGGGATCGTGTGGGCCACTCTGATGAGGCCCCCTGAGGACAGCACCCCTGACCACCCCTG
CATGATATGCGGTACCAAAGCTGATTGTGCAGATTTAATAGAAAACGAAGACGTTTTATTTC
ACGCGTACGCGGCCGCTCGAG - GFP Tag - GTTTAAAC
```



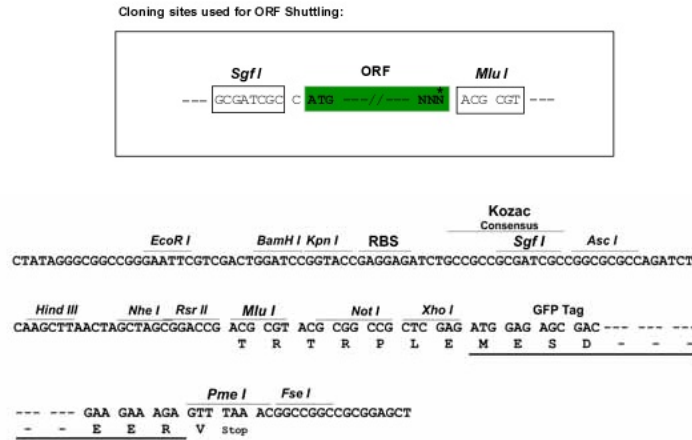
[View online »](#)

Protein Sequence: >Peptide sequence encoded by RG237085
 Blue=ORF Red=Cloning site Green=Tag(s)

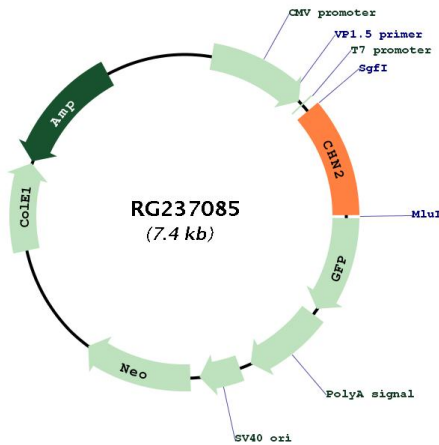
MFSEELWLENEKKCAVVRKSKQGRKRQELLAVAFGVKVGKGGFLWPPLKLFACSQISSLVRAALTHN
 DNHFNYEKTHNFKVHTFRGPHWCEYCANFMWGLIAQGVRCGLKSEGLYRVSGFTEHIEDVKMAFDRDG
 EKADISANVYPDINIITGALKLYFRDLPIPVITYDTYSKFIDAAKISNADERLEAVHEVLMLLPPAHYE
 TLRYLMIHLKKVTMNEKDNFMNAENLGI VFGPTLMRPEDSTLTLHDMRYQKLIVQIL IENEDVLF
TRTRPLEMESDESGLPAMEIECRITGTLNGVEFELVGGGEGTPEQGRMTNKMKSTKGALTFSPYLLSHV
 MGYGFYHFGTYPSGYENPFLHAINNGGYTNTRIEKYEDGGVLHVSFSYRYEAGRVIGDFKVMGTGFPEP
 SVIFTDKIIRSNAIVEHLHPMGDNDLDGSFTRTFSLRDGGYSSVVD SHMHFKSAIHPSILQNGGPMFA
 FRRVEEDHSNTELGIVEYQHAFKTPDADAGEERV

Restriction Sites: SgfI-MluI

Cloning Scheme:



Plasmid Map:



ACCN: NM_001293076

ORF Size:	822 bp
OTI Disclaimer:	The molecular sequence of this clone aligns with the gene accession number as a point of reference only. However, individual transcript sequences of the same gene can differ through naturally occurring variations (e.g. polymorphisms), each with its own valid existence. This clone is substantially in agreement with the reference, but a complete review of all prevailing variants is recommended prior to use. More info
OTI Annotation:	This clone was engineered to express the complete ORF with an expression tag. Expression varies depending on the nature of the gene.
Components:	The ORF clone is ion-exchange column purified and shipped in a 2D barcoded Matrix tube containing 10ug of transfection-ready, dried plasmid DNA (reconstitute with 100 ul of water).
RefSeq:	NM_001293076.1 , NP_001280005.1
RefSeq Size:	2841 bp
RefSeq ORF:	825 bp
Locus ID:	1124
UniProt ID:	P52757
Cytogenetics:	7p14.3
MW:	32 kDa
Gene Summary:	This gene encodes a guanosine triphosphate (GTP)-metabolizing protein that contains a phorbol-ester/diacylglycerol (DAG)-type zinc finger, a Rho-GAP domain, and an SH2 domain. The encoded protein translocates from the cytosol to the Golgi apparatus membrane upon binding by diacylglycerol (DAG). Activity of this protein is important in cell proliferation and migration, and expression changes in this gene have been detected in cancers. A mutation in this gene has also been associated with schizophrenia in men. Alternative transcript splicing and the use of alternative promoters results in multiple transcript variants. [provided by RefSeq, May 2014]