

Product datasheet for **RG236948**

PRUNE (PRUNE1) (NM_001303243) Human Tagged ORF Clone

Product data:

Product Type:	Expression Plasmids
Product Name:	PRUNE (PRUNE1) (NM_001303243) Human Tagged ORF Clone
Tag:	TurboGFP
Symbol:	PRUNE1
Synonyms:	DRES-17; DRES17; H-PRUNE; HTCD37; NMIHBA; PRUNE
Mammalian Cell Selection:	Neomycin
Vector:	pCMV6-AC-GFP (PS100010)
E. coli Selection:	Ampicillin (100 ug/mL)
ORF Nucleotide Sequence:	>RG236948 representing NM_001303243. Blue=ORF Red=Cloning site Green=Tag(s)

```
GCTCGTTTAGTGAACCGTCAGAATTTTGTAAACGACTCACTATAGGGCGGCCGGGAATTCGTCGACTG
GATCCGGTACCGAGGAGATCTGCCGCCGCGATCGCC
ATGAGATTGACCTCCATGCATTATACCAGGCTGGCCAACCTACCCTCATCCTTGTGACCATCATATCT
TATCCAAGACTGACCACTGAGCAGATGCTGAGAAAAGACCAGAAGACTATCTATAGACAAGGCGTCAAG
GTGGCCATTAGTGAATATATATGGATTTGGAGGCCTTTCTGCAGAGGTCTAACCTCCTGCAGATCTC
CATGCTTTCTGCCAGGCTCACAGCTATGATGTCCTGGTTGCCATGACTATCTTTTCAACACTCACAAT
GAGCCAGTGCCGAGTTGGCTATTTTCTGTCCCATGTGGCACTCAAACAACGATCTGTGAAGTCTCG
GAACGCTCCCACTCTCCACCCCTGAAGCTGACCCCTGCCTCAAGTACCCACCTAACCTCCATGCCTAT
CTTCAAGCAACACCCAGGTCTCTCGAAAGAACTTCTGCCCTGCTCCAGGAAGCCCTGTCAGCATAT
TTTGACTCCATGAAGATCCCTTCAGGACAGCCTGAGACAGCAGATGTGTCCAGGGAGCAAGTGGACAAG
GAATTGGACAGGGCAAGTAACTCCCTGATTTCTGGCCTGAGTCAAGATGAGGAGGACCCTCCGCTGCC
CCGACGCCATGAACAGCTTGGTGGATGAGTGCCTCTAGATCAGGGGCTGCCTAAACTCTCTGTGAG
GCCGTCTCGAGAAGTGCAGTCAGATCTCACTGTCACAGTCTACCACAGCCTCCCTGTCCAAGAAG
ACGCGTACGCGGCCGCTCGAG - GFP Tag - GTTTAAAC
```



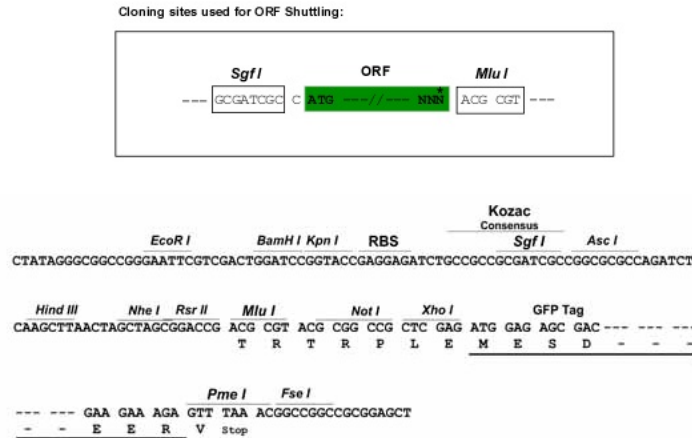
[View online »](#)

Protein Sequence: >Peptide sequence encoded by RG236948
 Blue=ORF Red=Cloning site Green=Tag(s)

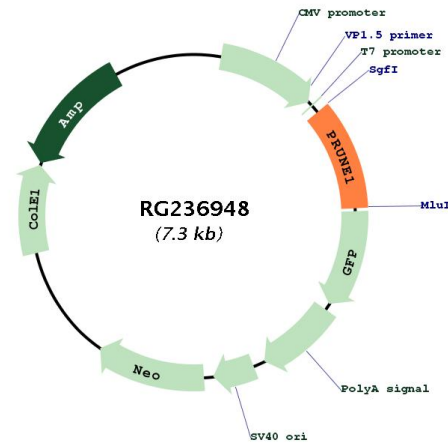
MRLTSMHYTRLANSPSSLSTIISYPRLTTEQMLRKDQKTIYRQGVKVAISAIYMDLEAFLQRSNLLADL
 HAFCAQHSYDVLVAMTIFFNTHNEPVRQLAIFCPHVALQTTICEVLSRSHSPPLKLTSPASSTHPNLHAY
 LQNGTQVSRKLLPLLQEALSAFYDSMKIPSGQPETADVSREQVDKELDRASNSLISGLSQDEEDPPLP
 PTPMNSLVDECPDQGLPKLSAEAVFEKCSQISLSQSTTASLSKK
 TRTRPLEMESDESGLPAMEIECRITGTLNGVEFELVGGGEGTPEQGRMTNKMSTKGALTFSPYLLSHV
 MGYGFYHFGTYPSGYENPFLHAINNGGYTNTRIEKYEDGGVLHVSFSYRYEAGRVIGDFKVMGTGFPED
 SVIFTDKIIRSNAIVEHLHPMGDNDLDGSFTRTFSLRDGGYSSVVDSHMHFKSAIHPSILQNGGPMFA
 FRRVEEDHSNTELGIVEYQHAFKTPDADAGEERV

Restriction Sites: SgfI-MluI

Cloning Scheme:



Plasmid Map:



ACCN: NM_001303243

ORF Size:	756 bp
OTI Disclaimer:	The molecular sequence of this clone aligns with the gene accession number as a point of reference only. However, individual transcript sequences of the same gene can differ through naturally occurring variations (e.g. polymorphisms), each with its own valid existence. This clone is substantially in agreement with the reference, but a complete review of all prevailing variants is recommended prior to use. More info
OTI Annotation:	This clone was engineered to express the complete ORF with an expression tag. Expression varies depending on the nature of the gene.
Components:	The ORF clone is ion-exchange column purified and shipped in a 2D barcoded Matrix tube containing 10ug of transfection-ready, dried plasmid DNA (reconstitute with 100 ul of water).
RefSeq:	NM_001303243.2
RefSeq Size:	2757 bp
RefSeq ORF:	759 bp
Locus ID:	58497
UniProt ID:	Q86TP1
Cytogenetics:	1q21.3
Protein Pathways:	Purine metabolism
MW:	28.5 kDa
Gene Summary:	This gene encodes a member of the DHH protein superfamily of phosphoesterases. This protein has been found to function as both a nucleotide phosphodiesterase and an exopolyphosphatase. This protein is believed to stimulate cancer progression and metastases through the induction of cell motility. A pseudogene has been identified on chromosome 13. Alternative splicing results in multiple transcript variants. [provided by RefSeq, Dec 2014]