

Product datasheet for **RG236669**

HMG4 (HMGB3) (NM_001301231) Human Tagged ORF Clone

Product data:

Product Type:	Expression Plasmids
Product Name:	HMG4 (HMGB3) (NM_001301231) Human Tagged ORF Clone
Tag:	TurboGFP
Symbol:	HMGB3
Synonyms:	HMG-2a; HMG-4; HMG2A; HMG4
Mammalian Cell Selection:	Neomycin
Vector:	pCMV6-AC-GFP (PS100010)
E. coli Selection:	Ampicillin (100 ug/mL)
ORF Nucleotide Sequence:	>RG236669 representing NM_001301231. Blue=ORF Red=Cloning site Green=Tag(s)

```
GCTCGTTTAGTGAACCGTCAGAATTTGTAAACGACTCACTATAGGGCGCCGGGAATTCGTCGACTG
GATCCGGTACCGAGGAGATCTGCCGCCGCGATCGCC
ATGCAAAGGATGGAAATACTTCTGCGCGTAAGCGCAATCCTTTTCATCATTGAATCAGGATGGCTAAA
GGTGACCCCAAGAAACCAAGGGCAAGATGTCCGCTTATGCCTTCTTTGTGCAGACATGCAGAGAAGAA
CATAAGAAGAAAAACCCAGAGGTCCCTGTCAATTTTGCAGAAATTTCCAAGAAGTCTCTGAGAGGTGG
AAGACGATGTCCGGAAAGAGAAATCTAAATTTGATGAAATGGCAAAGGCAGATAAAGTGCCTATGAT
CGGAAATGAAGGATTATGGACCAGCTAAGGGAGGCAAGAAGAAGGATCCTAATGCTCCAAAAGG
CCACCGTCTGGATTCTTCTGTTCTGTTTCAGAATTCGCCCAAGATCAAATCCACAACCCCGGCATC
TCTATTGGAGACGTGGCAAAAAGCTGGGTGAGATGTGGAATAATTTAAATGACAGTGAAAAGCAGCCT
TACATCACTAAGGCGGCAAGCTGAAGGAGAAGTATGAGAAGGATGTTGCTGACTATAAGTCGAAAGGA
AAGTTTGATGGTCAAAGGGTCTGCTAAAGTTGCCCGGAAAAAGGTGGAAGAGGAAGATGAAGAAGAG
GAGGAGGAAGAAGAGGAGGAGGAGGAGGAGGATGAA
ACGCGTACGCGGCCGCTCGAG - GFP Tag - GTTTAAAC
```



[View online »](#)

Protein Sequence: >Peptide sequence encoded by RG236669
 Blue=ORF Red=Cloning site Green=Tag(s)

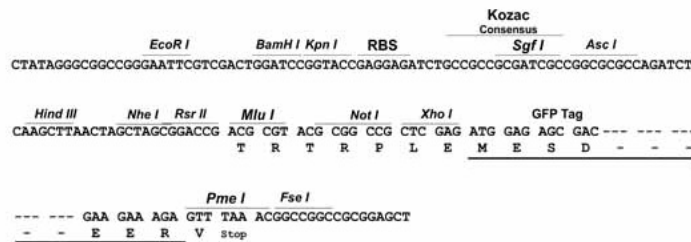
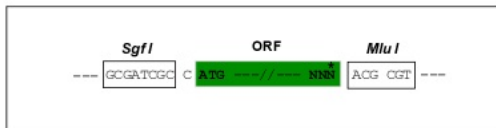
MQRMEILPARKRNPFIIRIRMAKGDPPKPKGKMSAYAFFVQTCREEHKKKNPEVPVNFVAFESKCKSERW
 KTMSGKEKSKFDEMAKADKVRDREMKDYGPAKGGKKKDPNAPKRPPSGFFLCSEFRPKIKSTNPGI
 SIGDVAKKL GEMWNLDSEKQPYITKAAKLKEKYEKDVADYKSKGKFDGAKGPAKVARKKVEEEDEEE
 EEEEEEEEEEEDE

TRTRPLEMESDESGLPAMEIECRITGTLNGVEFELVGGEGTPEQGRMTNKMSTKGALTFSPYLLSHV
 MGYGFYHFGTYPSTYENPFLHAINNGGYTNTRIEKYEDGGVLHVSFSYRYEAGRVI GDFKVMGTGFPE
 SVIFTDKIIRS NATVEHLHPMGDNDLDGSFTRTFSLRDGGYSSVVD SHMHFKSAIHPSILQNGGPMFA
 FRRVEEDHSNTELGIVEYQHAFKTPDADAGEERV

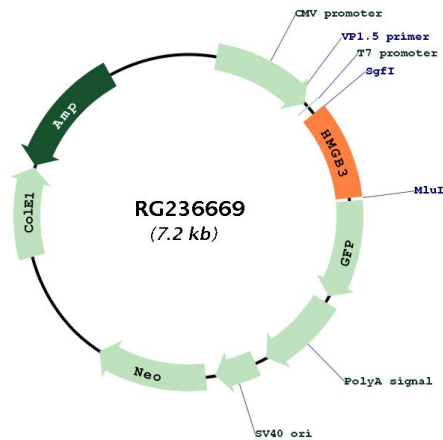
Restriction Sites: SgfI-MluI

Cloning Scheme:

Cloning sites used for ORF Shuttling:



Plasmid Map:



ACCN: NM_001301231

ORF Size:	660 bp
OTI Disclaimer:	The molecular sequence of this clone aligns with the gene accession number as a point of reference only. However, individual transcript sequences of the same gene can differ through naturally occurring variations (e.g. polymorphisms), each with its own valid existence. This clone is substantially in agreement with the reference, but a complete review of all prevailing variants is recommended prior to use. More info
OTI Annotation:	This clone was engineered to express the complete ORF with an expression tag. Expression varies depending on the nature of the gene.
Components:	The ORF clone is ion-exchange column purified and shipped in a 2D barcoded Matrix tube containing 10ug of transfection-ready, dried plasmid DNA (reconstitute with 100 ul of water).
RefSeq:	NM_001301231.2
RefSeq Size:	3606 bp
RefSeq ORF:	663 bp
Locus ID:	3149
UniProt ID:	O15347
Cytogenetics:	Xq28
Protein Families:	Transcription Factors
MW:	26 kDa
Gene Summary:	This gene encodes a member of a family of proteins containing one or more high mobility group DNA-binding motifs. The encoded protein plays an important role in maintaining stem cell populations, and may be aberrantly expressed in tumor cells. A mutation in this gene was associated with microphthalmia, syndromic 13. There are numerous pseudogenes of this gene on multiple chromosomes. Alternative splicing results in multiple transcript variants. [provided by RefSeq, Jul 2014]