

Product datasheet for **RG236621**

SSX2 (NM_001278697) Human Tagged ORF Clone

Product data:

Product Type:	Expression Plasmids
Product Name:	SSX2 (NM_001278697) Human Tagged ORF Clone
Tag:	TurboGFP
Symbol:	SSX2
Synonyms:	CT5.2; CT5.2A; HD21; HOM-MEL-40; SSX
Mammalian Cell Selection:	Neomycin
Vector:	pCMV6-AC-GFP (PS100010)
E. coli Selection:	Ampicillin (100 ug/mL)
ORF Nucleotide Sequence:	>RG236621 representing NM_001278697. Blue=ORF Red=Cloning site Green=Tag(s)

```
GCTCGTTTAGTGAACCGTCAGAATTTGTAAACGACTCACTATAGGGCGGCCGGGAATTCGTCGACTG
GATCCGGTACCGAGGAGATCTGCCGCCGCGATCGCC
ATGAACGGAGACGACGCCTTTGCAAGGAGACCCACGGTTGGTGCTCAAATACCAGAGAAGATCCAAAAG
GCCTTCGATGATATTGCCAAATACTTCTCTAAGGAAGAGTGGGAAAAGATGAAAGCCTCGGAGAAAATC
TTCTATGTGTATATGAAGAGAAAGTATGAGGCTATGACTAACTAGGTTTCAAGGCCACCCTCCCACCT
TTCATGTGTAATAAACGGGCCGAAGACTCCAGGGGAATGATTTGGATAATGACCCTAACCGTGGGAAT
CAGGTTGAACGTCCTCAGATGACTTTCGGCAGGCTCCAGGAATCTCCCCGAAGATCATGCCAAGAAG
CCAGCAGAGGAAGGAAATGATTCGAGGAAGTCCAGAAGCATCTGGCCACAAAATGATGGGAAAGAG
CTGTGCCCCCGGAAAACCAACTACCTCTGAGAAGATTCACGAGAGATCTGAAAATAGGGAGGCCCAA
GAAAAGGAAGAGAGACGCGGAACAGCTCATCGGTGGAGCAGTCAGAACACACACAACATTGGACCCAAA
AGGGGGGAACATGCCTGGACCCACAGACTGCGTGAGAGAAAACAGCTGGTGATTTATGAAGAGATCAGC
GACCCTGAGGAAGATGACGAG
ACGCGTACGCGGCCGCTCGAG - GFP Tag - GTTTAAAC
```



[View online »](#)

Protein Sequence: >Peptide sequence encoded by RG236621
 Blue=ORF Red=Cloning site Green=Tag(s)

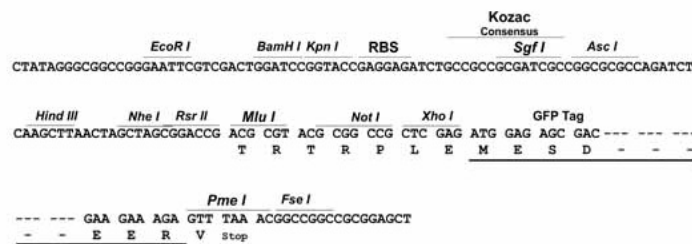
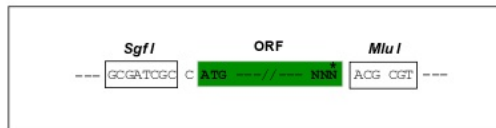
MNGDDAFARRPTVGAQIPEKIQAFFDDIAKYFSKEEWEKMKASEKIFVYVMKRKYEAMTKLGFKATLPP
 FMCNKRAEDFQGNLDNDPNRGNQVERPQMTFGRLOGISPKIMPKKPAEEGNDSEEVPEASGPQNDGKE
 LCPPGKPTTSEKIHESGNREAQKEERRGTAHRWSSQNTNHNIGPKRGEHAWTHRLRERKQLVIYEEIS
 DPEEDDE

TRTRPLEMESDESGLPAMEIECRITGTLNGVEFELVGGEGTPEQGRMTNKMSTKGALTFSPYLLSHV
 MGYGFYHFGTYPSTYENPFLHAINNGGYTNTRIEKYEDGGVLHVSFSYRYEAGRVIGDFKVMGTGFPED
 SVIFTDKIIRSNAIVEHLHPMGDNDLDGSFTRTFSLRDGGYSSVVDSHMHFKSAIHPSILQNGGPMFA
 FRRVEEDHSNTELGIVEYQHAFKTPDADAGEERV

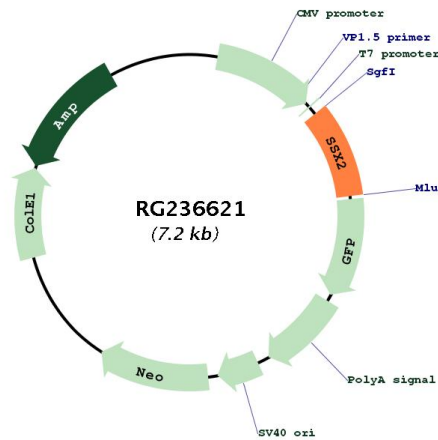
Restriction Sites: SgfI-MluI

Cloning Scheme:

Cloning sites used for ORF Shuttling:



Plasmid Map:



ACCN: NM_001278697

ORF Size:	642 bp
OTI Disclaimer:	The molecular sequence of this clone aligns with the gene accession number as a point of reference only. However, individual transcript sequences of the same gene can differ through naturally occurring variations (e.g. polymorphisms), each with its own valid existence. This clone is substantially in agreement with the reference, but a complete review of all prevailing variants is recommended prior to use. More info
OTI Annotation:	This clone was engineered to express the complete ORF with an expression tag. Expression varies depending on the nature of the gene.
Components:	The ORF clone is ion-exchange column purified and shipped in a 2D barcoded Matrix tube containing 10ug of transfection-ready, dried plasmid DNA (reconstitute with 100 ul of water).
RefSeq:	NM_001278697.1 , NP_001265626.1
RefSeq Size:	1426 bp
RefSeq ORF:	645 bp
Locus ID:	6757
UniProt ID:	Q16385
Cytogenetics:	Xp11.22
Protein Families:	Druggable Genome, Transcription Factors
MW:	25.1 kDa
Gene Summary:	The product of this gene belongs to the family of highly homologous synovial sarcoma X (SSX) breakpoint proteins. These proteins may function as transcriptional repressors. They are also capable of eliciting spontaneous humoral and cellular immune responses in cancer patients, and are potentially useful targets in cancer vaccine-based immunotherapy. This gene, and also the SSX1 and SSX4 family members, have been involved in t(X;18)(p11.2;q11.2) translocations that are characteristically found in all synovial sarcomas. This translocation results in the fusion of the synovial sarcoma translocation gene on chromosome 18 to one of the SSX genes on chromosome X. The encoded hybrid proteins are likely responsible for transforming activity. Alternative splicing of this gene results in multiple transcript variants. This gene also has an identical duplicate, GenelD: 727837, located about 45 kb downstream in the opposite orientation on chromosome X. [provided by RefSeq, Jul 2013]